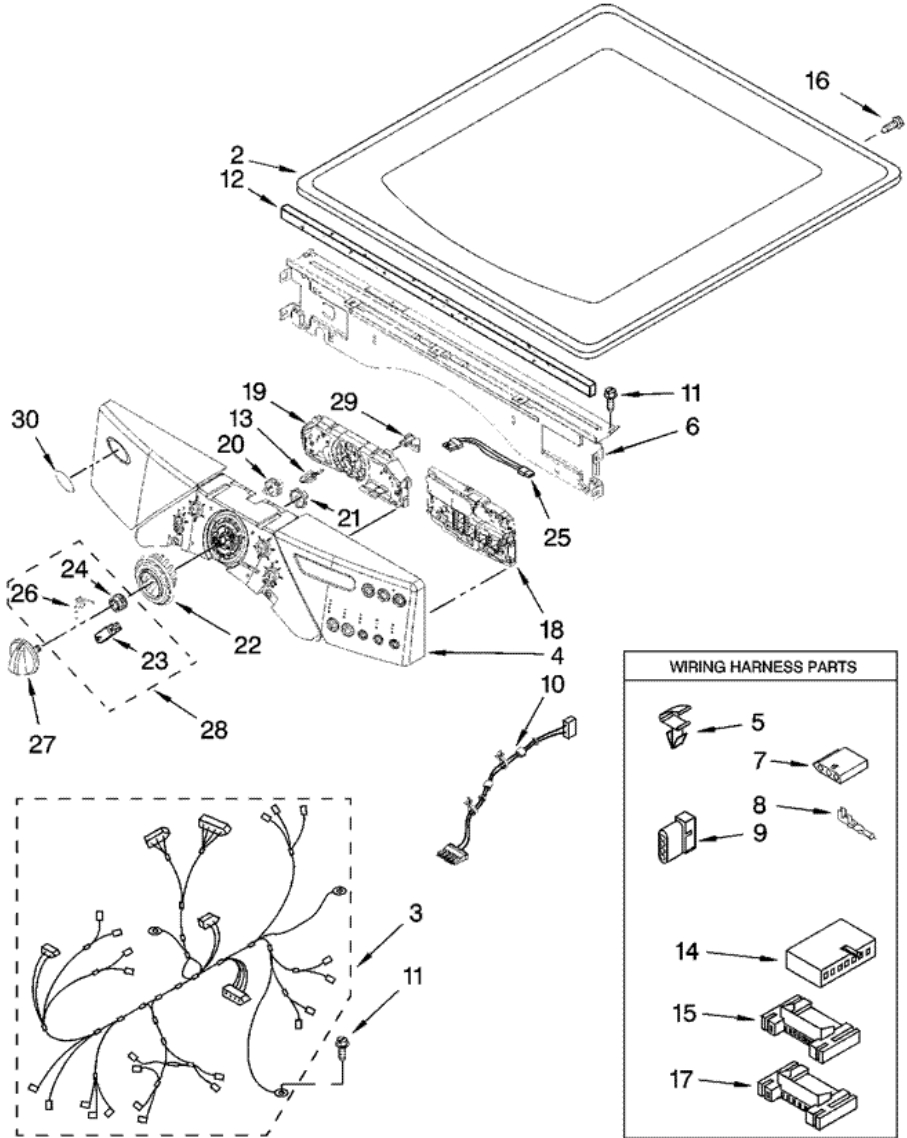


7MWGD9400TU1 TABLERO



WIRING HARNESS PARTS

Diagram showing various wiring harness parts:

- 5: Small plastic clip
- 7: Small electronic component
- 8: Small electronic component
- 9: Small electronic component
- 14: Control board
- 15: Control board
- 17: Control board



7MWGD9400TU1 TABLERO

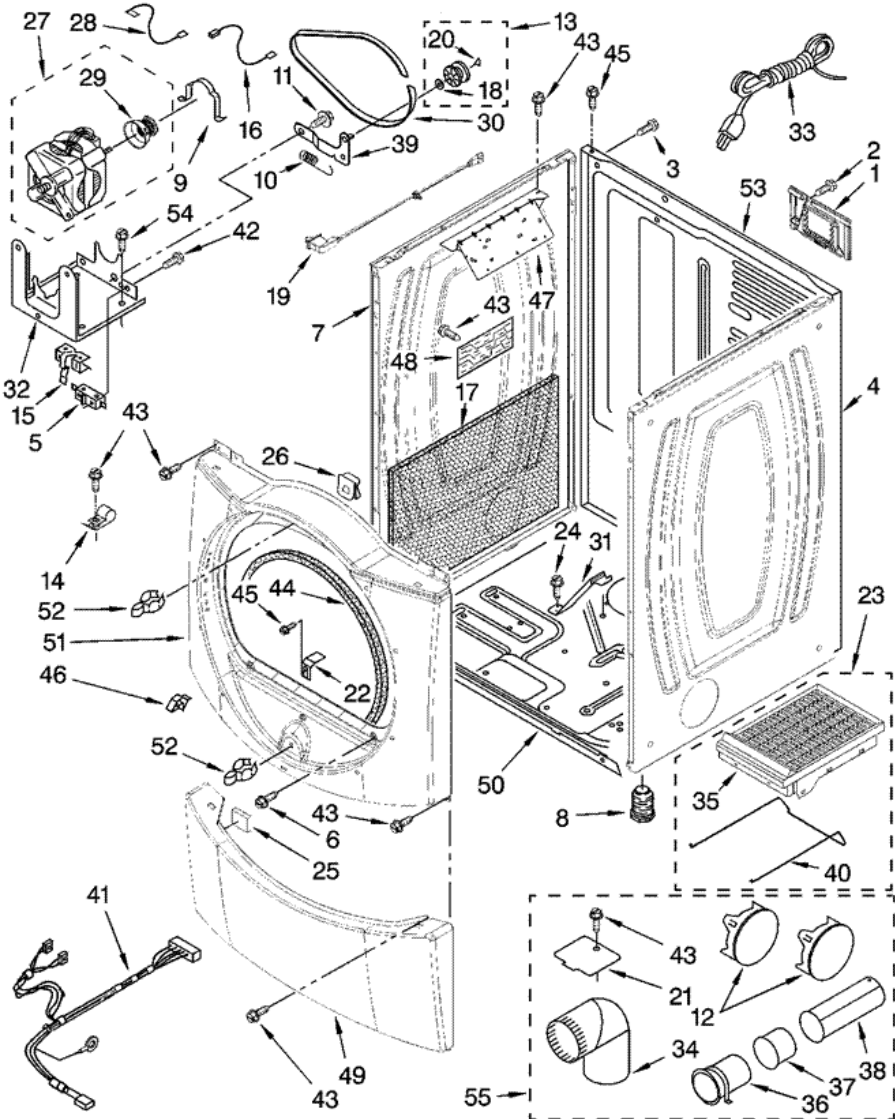
2	W10114785	TOP (S/P)
3	W10111011	HARNESS, MAIN (S/P)
4	W10116697	PANEL, CONSOLE (S/P)
5	3394427	CLIP, HARNESS (S/P)
6	W10215656	BRACKET, CONSOLE (INCLUDES NO.12) (S/P)
7	353424	CONNECTOR, SENSOR (S/P)
8	94614	TERMINAL (S/P)
9	3936144	PLUG, TERMINAL (S/P)
10	W10111020	POWER CABLE USER INTERFACE (S/P)
11	3390647	SCREW, 8-18 X 1/2 (S/P)
12	W10112267	FOAM-SEAL (S/P)
13	W10012480	ARRAY-POWER (S/P)
14	3936150	CONNECTOR, 7-CIRCUIT (S/P)
15	3395683	CONNECTOR, (MOTOR) (S/P)
16	8281225	SCREW, 8-18 X 1/2 (S/P)
17	2203186	CONNECTOR, 5-CIRCUIT (S/P)
18	W10294629	USER-INTERFACE (RIGHT) (S/P)
19	W10121375	USER-INTERFACE CENTER DESCONTINUADO
20	W10012430	ENCODER-WHEEL DESCONTINUADO
21	W10012440	RETAINER-SNAP (S/P)
22	W10012410	KNOB, LIGHT RING (INCLUDES: ILLUS. 21) (S/P)
23	280230	RAST, WHEEL ASSY. (S/P)
24	280230	DETENT WHEEL (S/P)
25	W10095960	HARNESS, COMMUNICATION (S/P)
26	280230	KNOB, SPRING (S/P)
27	W10116704	KNOB, CONTROL (INCLUDES: ITEM. 21) (S/P)
28	280230	ENCODER, WHEEL(KIT) (S/P)
29	W10112268	CLIP-HARNESS (4) (S/P)
30	8303811	BADGE (S/P)

Distribuidor Autorizado

SurteRápido.com

Venta de Refacciones
Electrodomesticas

7MWGD9400TU1 GABINETE





7MWGD9400TU1 GABINETE

1	8317340	COVER, TERMINAL BLOCK (S/P)
2	3390814	SCREW, 8-18 X 3/8 (S/P)
3	697776	SCREW, 10-32 X 5/8 (GROUND) (S/P)
4	W10192451	PANEL, SIDE (R.H.) (S/P)
5	279782	SWITCH, BROKEN BELT (S/P)
6	3357011	SCREW, 10-16 X 1/2 (S/P)
7	W10192440	PANEL, SIDE (L.H.) (S/P)
8	3392100	FOOT, DRYER
8	279810	FOOT - OPTIONAL (S/P)
9	660658	CLAMP, MOTOR (2) (S/P)
10	3387374	SPRING, IDLER (S/P)
11	3389420	RETAINER, IDLER (S/P)
12	8579117	PLUG, MULTIVENT (S/P)
13	279640	PULLEY ASSEMBLY
14	3978776	BRACKET, GAS PIPE (S/P)
15	8066120	LEVER, SNAP SWITCH (S/P)
16	W10167612	WIRE, BELT SWITCH (S/P)
17	8564134	SOUND PANEL (S/P)
18	W10121334	WASHER (S/P)
19	W10318609	ASSEMBLY, DOOR SWITCH (S/P)
20	690997	TRI RING (S/P)
21	3394331	COVER-PLATE (S/P)
22	8529053	RAMP, DOOR (S/P)
23	W10121663	DRY RACK ASSEMBLY (S/P)
24	693995	SCREW, 8-18 X 3/8 (S/P)
25	3389682	SPACE-TOE PANEL (S/P)
26	62825	CLIP-S TYPE (S/P)
27	279787	MOTOR ASSEMBLY 60 HZ.
28	3398948	WIRE, JUMPER (BROKEN BELT SWITCH) (S/P)
29	8578220	PULLEY 60 HZ. (S/P)
30	661570	BELT, DRIVE
31	8529757	BRACKET, BURNER (S/P)
32	3387118	BRACKET, MOTOR (S/P)

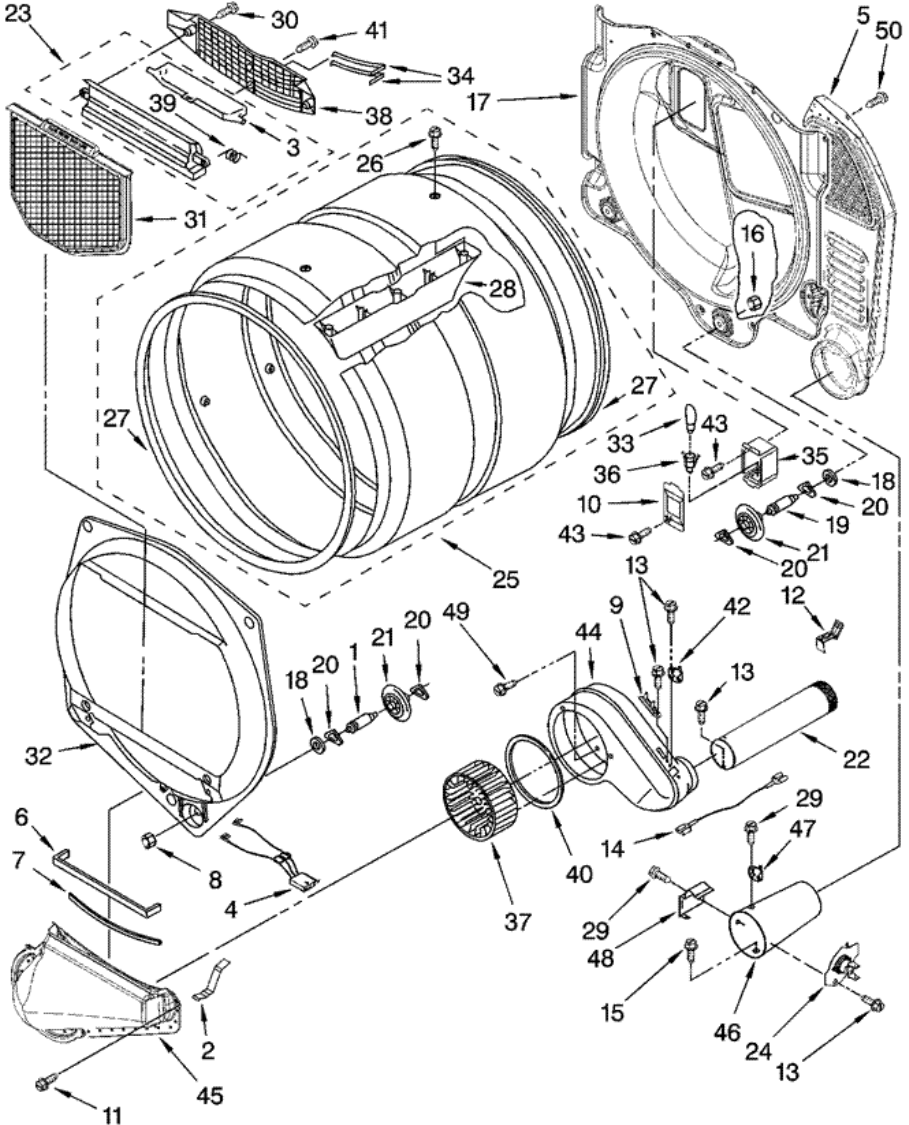
33	3401402	CORD, POWER (S/P)
34	49026	4" - 90 ELBOW (S/P)
35	W10121663	DRY RACK (TOP) (S/P)
36	8563747	EXHAUST PIPE & BRACKET (S/P)
37	8563750	EXHAUST PIPE (SHORT) (S/P)
38	8563749	EXHAUST PIPE (LONG) (S/P)
39	W10118756	IDLER BRACKET (S/P)
40	8521961	DRY RACK SUPPORT (S/P)
41	W10181464	HARNESS, DIGITAL INTERFACE (S/P)
42	98129	SCREW, 6-20 X 1 1/16 (S/P)
43	3390647	SCREW, 8-18 X 1/2 (S/P)
44	3387242	SEAL, FRONT PANEL
45	3393008	SCREW, 10-16 X 1/2 (S/P)
46	8519459	CLIP, TOE PANEL (S/P)
47	8563727	BRACKET, CONTROL (S/P)
48	W10174745	BOARD, CONTROL (S/P)
49	W10116277	PANEL, TOE (S/P)
50	8519207	BASE, CABINET (S/P)
51	W10180429	FRONT PANEL (INCLUDES ILLUS. 44) (S/P)
52	279570	STRIKE, DOOR (2)
53	280036	PANEL, REAR (S/P)
54	343641	SCREW, 10-16 X 1/2 (S/P)
55	280171A	DRYER EXHAUST KIT (S/P)

Distribuidor Autorizado

SurteRápido.com

Venta de Refacciones
Electrodomesticas

7MWGD9400TU1 TAMBOR



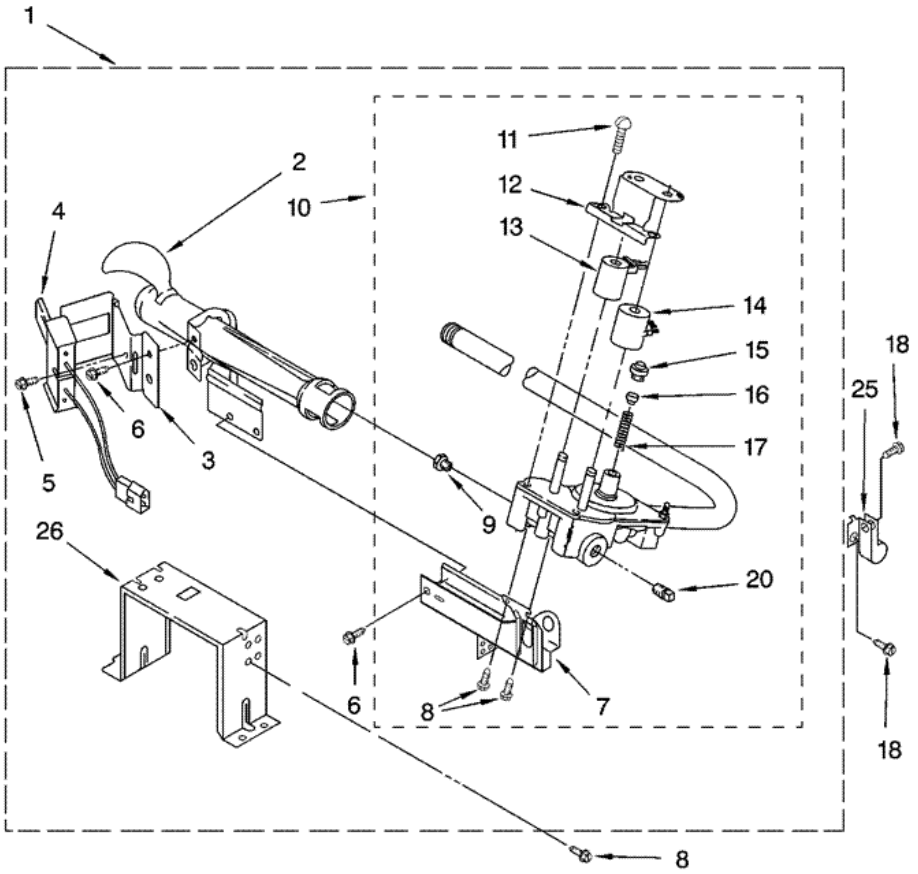


7MWGD9400TU1 TAMBOR

1	8575324	SHAFT, R.H. THREAD (S/P)
2	8066208	CLIP-SPRING (S/P)
3	8563758	DOOR, LINT SCREEN (S/P)
4	3406653	HARNESS, SENSOR (S/P)
5	3394346	AIR DUCT ASSEMBLY (S/P)
6	697813	SEAL, OUTLET HOUSING (S/P)
7	697813	SEAL, DRUM FRONT (S/P)
8	W10080210	NUT, 3/8 X 16(R.H.) (S/P)
9	3392519	THERMAL-FUSE (91C)
10	8532165	LENS, DRUM LIGHT (S/P)
11	359625	SCREW, 8-18 X 1/2 (S/P)
12	8572105	CLIP, EXHAUST PIPE (S/P)
13	8533971	SCREW, 8-18 X 5/16 (S/P)
14	3401710	JUMPER, TCO HI-LIMIT (S/P)
15	693995	SCREW, 8-18 X 3/8 (S/P)
16	W10080190	NUT, 3/8-16 (L.H.) (S/P)
17	W10080170	BULKHEAD, REAR (S/P)
18	W10080960	WASHER, SUPPORT (S/P)
19	W10359272	SHAFT, L.H. THREAD (S/P)
20	690997	RING, TRI (S/P)
21	W10314173	ROLLER, SUPPORT (S/P)
22	279936	EXHAUST PIPE (S/P)
23	8563755	HOUSING, OUTLET (S/P)
24	8573713	THERMAL, CUT-OFF (S/P)
25	W10181466	COMPLETE DRUM ASSEMBLY (S/P)
26	W10109200	SCREW, 11-16 X 3/4 (S/P)
27	280114	SEAL, DRUM (S/P)
28	280114	BAFFLE, DRUM (S/P)
29	90767	SCREW, 8-18 X 3/8 (S/P)
30	3387230	SCREW, 10-16 X 1 (S/P)
31	W10120998	SCREEN, LINT
32	W10136455	BULKHEAD, FRONT (S/P)
33	22002263	BULB, LIGHT (S/P)

34	3387223	ELECTRODE, SENSOR (S/P)
35	8578825	BRACKET, DRUM LIGHT (S/P)
36	W10136369	SOCKET ASSEMBLY (S/P)
37	697772	WHEEL, BLOWER
38	8299979	GRILLE, OUTLET (S/P)
39	3394986	SPRING, LINT SCREEN DOOR (S/P)
40	697770	SEAL, COVER PLATE (S/P)
41	695240	SCREW, 8-18 X 1/2 (S/P)
42	3976615	THERMISTOR
43	487909	SCREW, 8-15 X 1/2 (S/P)
44	W10119255	HOUSING, BLOWER (S/P)
45	W10128606	LINT DUCT ASSEMBLY (S/P)
46	8573824	FUNNEL, BURNER (S/P)
47	8573028	THERMOSTAT, HIGH-LIMIT 205 F (96 C) (S/P)
48	338906	SENSOR, RADIANT
49	489463	SCREW, 8-18 X 5/8 (S/P)
50	3390647	SCREW, 8-18 X 1/2 (S/P)

7MWGD9400TU1 QUEMADOR





7MWGD9400TU1 QUEMADOR

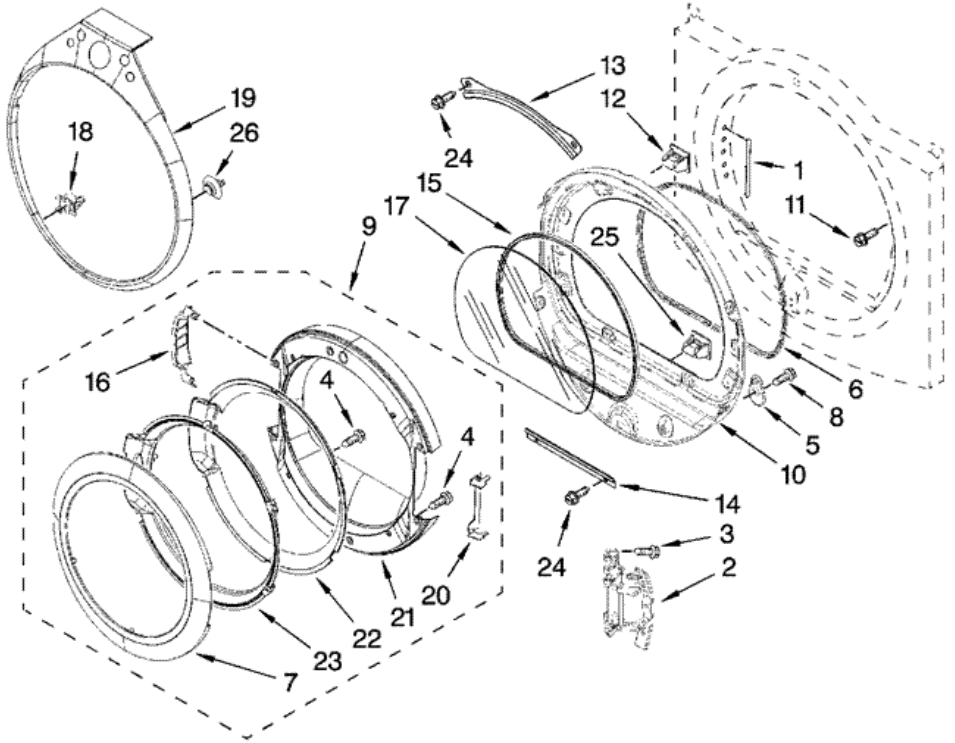
1	280119	BURNER ASSEMBLY 60 HZ. (TYPE 1) (S/P)
2	693140	TUBE, BURNER (S/P)
3	694298	BRACKET, IGNITOR (S/P)
4	279311	IGNITOR
5	3393909	SCREW & WASHER (8-32 X 7/8) (S/P)
6	343641	SCREW, 10-16 X 1/2 (S/P)
7	3389871	BASE, BURNER DESCONTINUADO
8	3387057	SCREW, 8-18 X 3/8 (S/P)
9	229742	ORIFICE, BURNER (TYPE 4 (PROPANE)) (S/P)
9	15418	ORIFICE, BURNER (TYPE 1) (S/P)
9	15422	ORIFICE, BURNER (TYPE 4 DESCONTINUADO)
10	W10118347	VALVE, GAS 60 HZ. (COMPLETE) (S/P)
11	694421	SCREW, 8-32 X 1/2 (2) (S/P)
12	694538	BRACKET, COIL (S/P)
13	694540	COIL, 60 HZ. (2 TERMINAL) (MAIN) (S/P)
14	694539	COIL, 60 HZ. (SPLIT) (3 TERMINAL) (S/P)
15	694424	LEAK, LIMITER (S/P)
16	694423	SCREW, REGULATOR ADJUSTMENT (S/P)
17	694422	SPRING, REGULATOR (S/P)
18	3390647	SCREW, 8-18 X 1/2 (S/P)
20	239822	PLUG, PIPE DESCONTINUADO
25	3387561	CLAMP, PIPE DESCONTINUADO
26	3389889	BRACKET, SUPPORT DESCONTINUADO
	W10317689	CONVERSION KIT (TYPE (1) TO TYPE (4) LPG) (S/P)

Distribuidor Autorizado

SurteRápido.com

Venta de Refacciones
Electrodomesticas

7MWGD9400TU1 PUERTA





7MWGD9400TU1 PUERTA

1	W10085230	LABEL, HINGE HOLE (S/P)
2	W10139920	DOOR HINGE ASSEMBLY (S/P)
3	W10159996	SCREW, 10-24 X 3/64 (S/P)
4	9742177	SCREW, 8-18 X 5/8 (S/P)
5	W10048910	SCREW-PLUG (S/P)
6	W10139457	SEAL-DOOR (S/P)
7	8579502	HANDLE, RING (S/P)
8	3393008	SCREW, 10-16 X 1/2 (S/P)
9	W10180115	DOOR ASSEMBLY (OUTER) (S/P)
10	8578229	DOOR ASSEMBLY (INNER) (S/P)
11	355515	SCREW, 8-18 X 11/16 (S/P)
12	279570	DOOR CATCH ASSEMBLY (UPPER)
13	8519356	RETAINER-WINDOW (UPPER) (S/P)
14	8519354	RETAINER-WINDOW (LOWER) (S/P)
15	8579662	SEAL, WINDOW (S/P)
16	W10180119	COVER-HINGE, STATIONARY (LH) (S/P)
16	W10181197	COVER-HINGE, STATIONARY (RH) (S/P)
17	8566254	WINDOW (S/P)
18	W10129065	CLIP-TRIM (8) (S/P)
19	W10180498	TEAR-DROP TRIM & CLIP ASSEMBLY (S/P)
20	W10074630	DOOR SHIELD (S/P)
21	W10180118	DOOR, INTERMEDIATE (S/P)
22	W10180117	DOOR MASK (S/P)
23	8578155	DOOR SCREEN (S/P)
24	3393258	SCREW, 10-16 X 3/8 (S/P)
25	279570	DOOR CATCH ASSEMBLY (LOWER)
26	W10112671	CLIP-TRIM (6) (S/P)
	799344	PAINT, BULK (1 QT.) (WHITE (UNCUT)) (S/P)
	4392067	KIT, DRYER REPAIR (S/P)
	8212605	PAINT, TOUCH-UP (1/2OZ.) (ULTIMATE SILVER) (S/P)
	8579666A	KIT, DOOR REVERSING (S/P)
	346764	KIT, HOLD DOWN (S/P)