

# Whirlpool

SERVICE

CENTRO DE SOLUCIONES



LO ORIGINAL MARCA DIFERENCIA

**EXPLOSIONADO DE PARTES**

- PARRILLA A GAS-

MODELO | AP3020S00

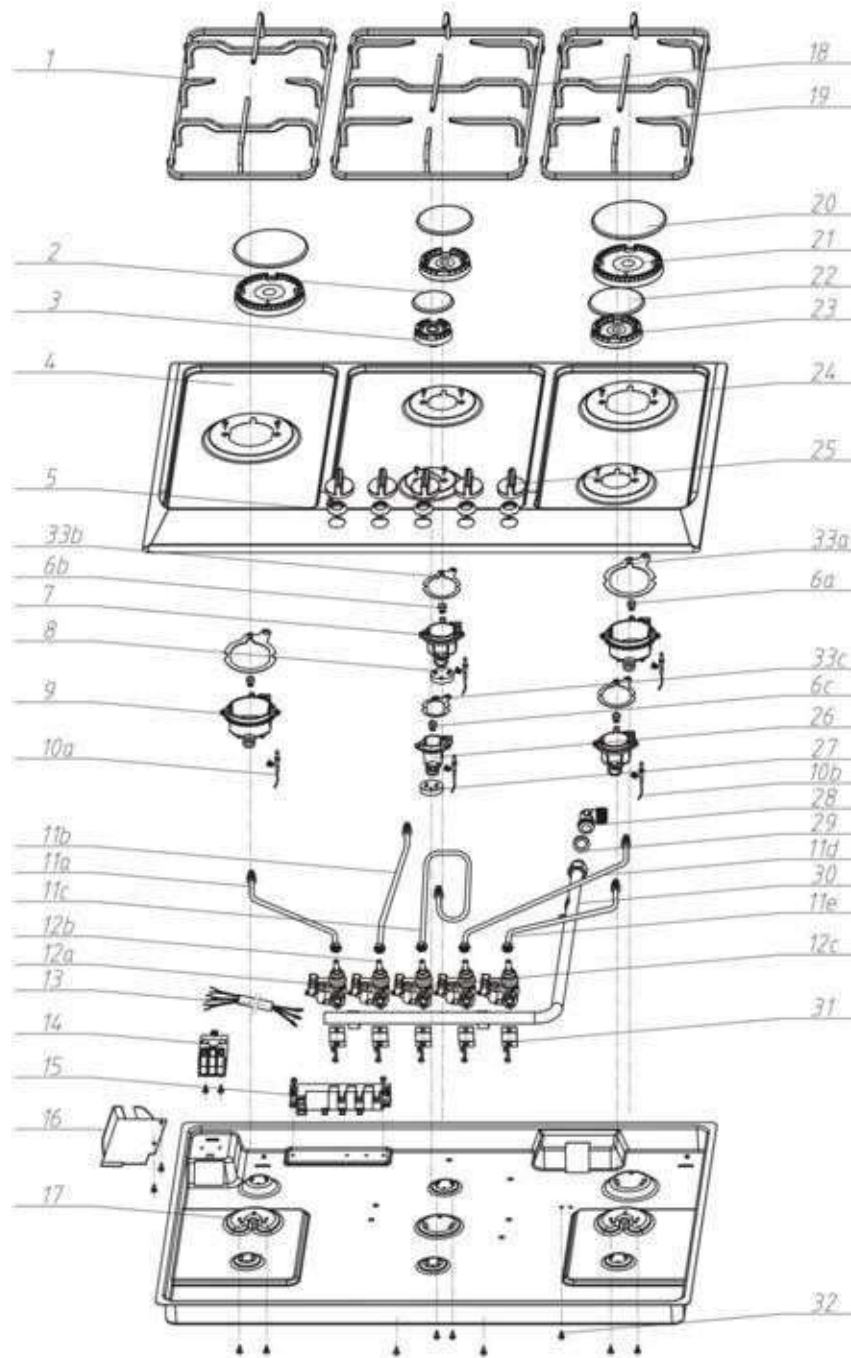
acros<sup>®</sup>

Whirlpool  
CORPORATION

MAYTAG<sup>®</sup>

KitchenAid<sup>™</sup>

PFM850LX-E



item	part code	part name	Quantity
1	30402600015	Left cast iron trivet	1
2	32212007	Light-lid for auxiliary burner	1
3	32221004	Auxiliary flamethrower	1
4	32172283	Stainless steel panel	1
5	32120012	Water proof washer for knob	5
6a	32191007	403mid- nozzle	2
6b	32191002	328 small-nozzle	2
6c	32191005	6458 auxiliary -nozzle	1
7	32202007	Small stove head cup	2
8	32100005	Small head pad block	1
9	32203005	Mid-stove head cup	2
10a	32300006	403A small ignition	3
10b	32300007	403A small ignition	2
11a	32163532	Aluminium pipe A	1
11b	32164202	Aluminium pipe B	1
11c	32164203	Aluminium pipe C	1
11d	32164199	Aluminium pipe D	1
11e	32164200	Aluminium pipe E	1
12a	32110017	Φ6 vavle with safety device	2
12b	32110031	Φ6 vavle with safety device	2
12c	32110030	Φ6 vavle with safety device	1
13	32307003	America plug	1
14	32311013	Connector	1
15	32304005	Pulser	1
16	32011010	Juction box cover	1
17	32002059	Chasis	1
18	30402600012	Middle cast iron trivet	1
19	30402600008	Right cast iron trivet	1
20	32214005	Light-lid for rapid- burner	2
21	32223005	Rapid flamethrower	2
22	32213003	Light-lid for sem-rapid burner	2
23	32222006	Sem-rapid flamethrower	2
24	20106028	Screws	10
25	32244027	K17 knob	5
26	32201004	Auxiliary stove head cup	1
27	32100006	Auxiliary head pad block	1
28	32243007	Inlet elbow	1
29	32258016	Seal washer	2
30	32160069	Inlet pipe	1
31	32001012	Hold up	5
32	20105004	Screws	9
33a	32258047	Water proof washer for mid-stove cuphead	2
33b	32258046	Water proof washer for small stove head cup	2
33c	32258045	Water proof washer for auxiliary stove	1
NO	30105300116	ARNES DE ENCENDIDO	1

IMAGEN