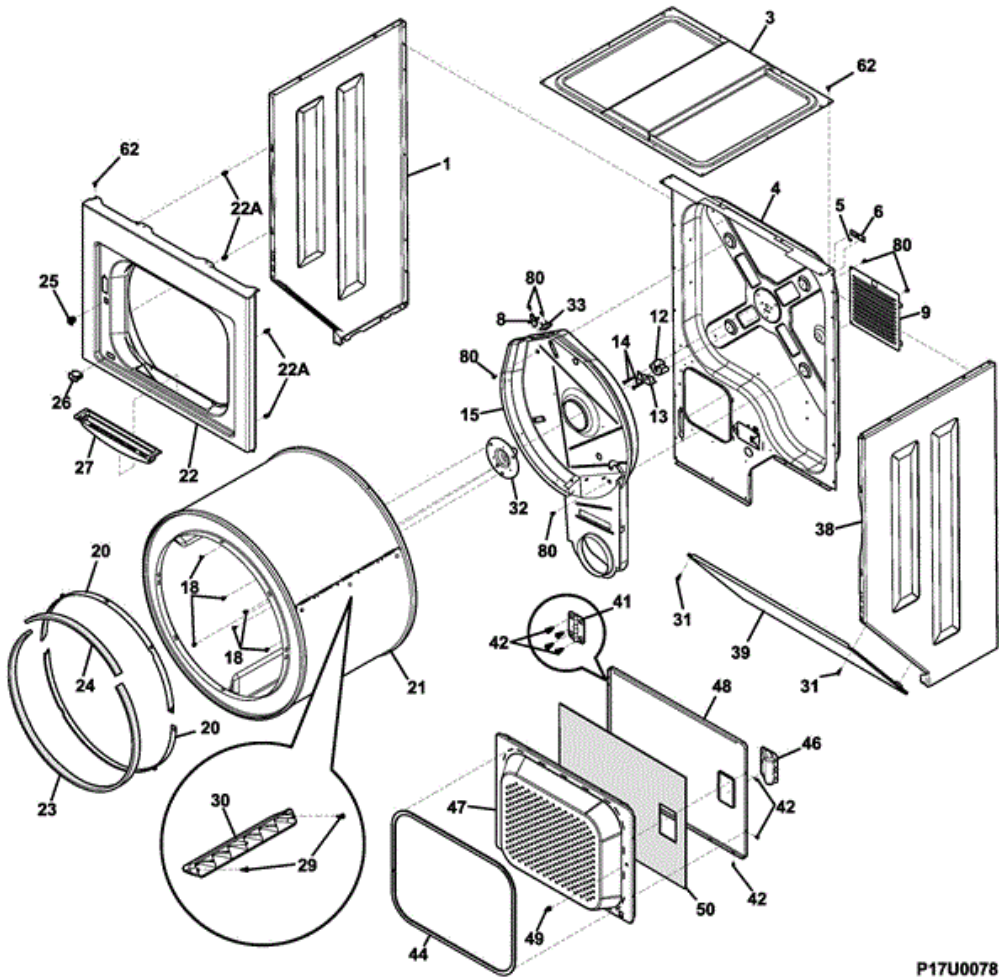


FFLG1011MW2

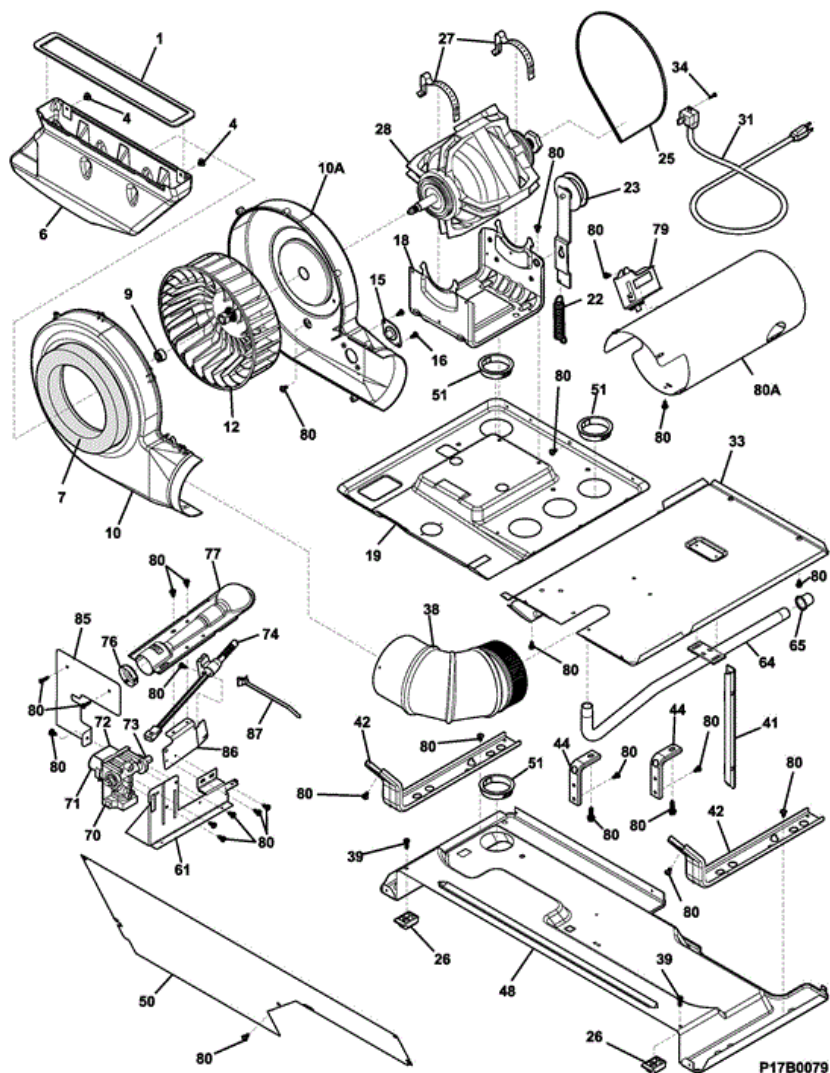


FFLG1011MW2

1	137510410	PANEL, LEFT SIDE, WHITE S/P
3	131883301	PANEL, TOP S/P
4	137491301	PANEL, REAR, DRYER, STAINLESS S/P
5	5303281019	BALL, GROUNDING S/P
6	5303281020	CLIP, BALL, STEEL, FLAT NUT S/P
8	137032600	LIMITER, THERMAL, HEATER S/P
9	5304488480	PANEL, MOTOR ACCESS, WASHED S/P
12	131825900	BEARING, DRUM SUPPORT
13	131724300	BRACKET, BEARING SUPPORT S/P
14	131205400	SCREW, BRACKET MTG., 10-16B X 1.375, CR/SQ DRIVE S/P
15	134865102	HOUSING, HEATER, GAS S/P
18	131477000	SCREW, 10-16AB X 0.375 S/P
20	137513300	GLIDE, FLAT, DRYER
21	134122565	DRUM, LC GALV GD S/P
22	137511810	PANEL, FRONT WELD, WHITE S/P
22A	137362600	PIN, PANEL LOCATOR S/P
23	134134700	SEAL, FELT, LOWER S/P
24	134036400	SEAL, FELT, UPPER S/P
25	131658800	DOOR CATCH, UPPER S/P
26	134813600	SWITCH, DOOR
27	131359600	LINT TRAP
29	131382300	SCREW, QUADREX HEAD, 10-14 X 1.00, VANE MTG., SPECIAL S/P
30	5303201200	VANE, STRAIGHT S/P
31	131202300	SCREW, 10-16AB X 0.625 S/P
32	137088600	SHAFT, DRUM SUPPORT, BALLHITCH
33	5304406099	THERMOSTAT, SAFETY
38	137510510	PANEL, RIGHT SIDE, WHITE S/P
39	137546910	PANEL, ACCESS S/P
41	134222900	HINGE, DRYER DOOR S/P
42	134156200	SCREW, FLAT HEAD, 8-18AB X 0.44, QUAD DRIVE S/P
44	137492200	GASKET, DOOR S/P
46	131789400	HANDLE, DOOR, WHITE S/P
47	137365110	PANEL, INNER DOOR, WHITE S/P

48	137408403	PANEL, OUTER DOOR, WHITE
49	5303211430	DOOR STRIKE S/P
50	134535300	INSULATOR, HEAT SHIELD, OUTER DOOR S/P
62	131258400	SCREW, 10-16AB X 0.500 S/P
80	131168200	SCREW, PAN HEAD, 8-18B X 0.31
NI	137328900	WIRING HARNESS, DOOR SWITCH, W/O LIGHT
NIA	137576600	PLUG, LIGHT HOLE

FFLG1011MW2



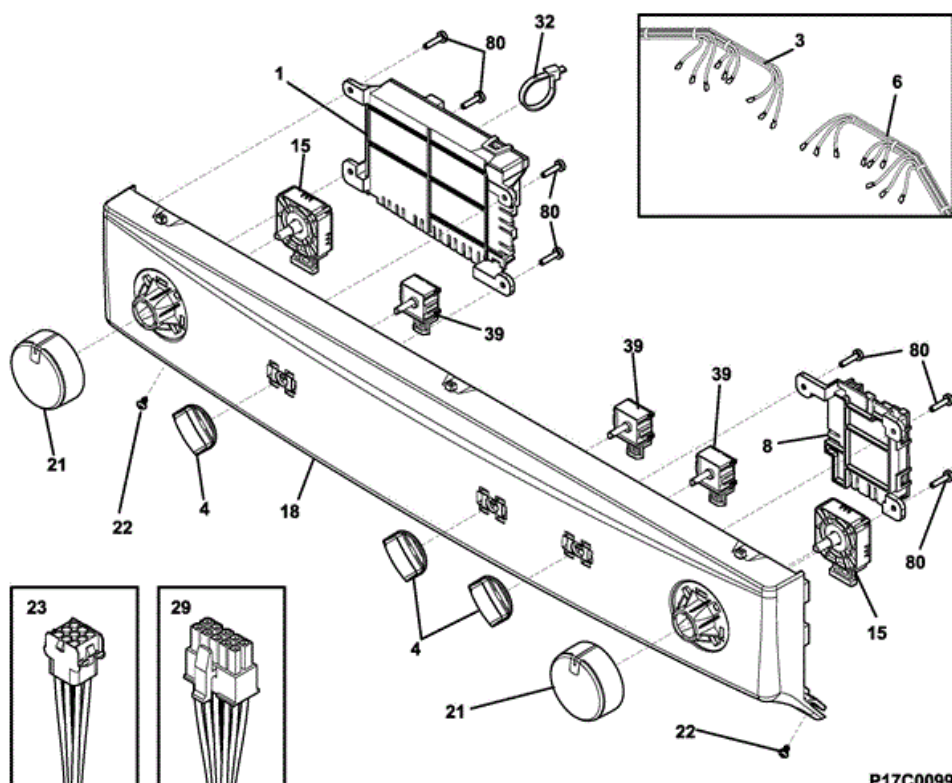
P17B0079

FFLG1011MW2

1	131295200	SEAL, AIR DUCT S/P
4	131362400	FASTENER, PUSH-IN S/P
6	134086300	DUCT, AIR
7	3204490	SEAL, HOUSING, TO AIR DUCT S/P
9	5304488479	CLAMP
10	134611700	HOUSING, BLOWER, FRONT, WITH SEAL S/P
10A	134608200	HOUSING, BLOWER, REAR S/P
12	131476300	BLOWER WHEEL
15	134587700	THERMISTOR, CONTROL
16	131243700	SCREW, PAN HEAD, 8-18AB X 0.375 S/P
18	131367100	CRADLE, MOTOR W/IDLER S/P
19	137490900	PAN, UPPER L/C, DRYER, FORMED S/P
22	3205241	SPRING, IDLER S/P
23	131863100	IDLER ARM ASSY, WITH PULLEY
25	137051400	BELT, POLY V S/P
26	137511300	BLOCK, SUPPORT S/P
27	134242400	CLAMP, MOTOR MTG. S/P
28	134196600	MOTOR, DRYER DRIVE, WITH PULLEY
31	134500500	POWER CORD, ELECTRIC SVCE S/P
33	131731410	SHIELD, ACCESS AREA, COVER S/P
34	134154100	SCREW, HEX WASHER HEAD, 10-32 X 0.375, GROUND S/P
38	3204320	ELBOW, EXHAUST DUCT S/P
39	131205100	SCREW, #8 PAN HEAD, 10-10B X 0.500, CR/SQ DRIVE S/P
41	131091300	BRACKET, SUPPORT, SIDE S/P
42	137304710	BRACKET, MARRIAGE, DRYER S/P
44	3204326	BRACKET, L MOUNTING, CABINET REAR, EXTERNAL S/P
48	137329110	PAN, BOTTOM LC DRYER S/P
50	5304488478	COVER, SUPPORT, LCD S/P

51	131453000	BUSHING, SNAP-IN S/P
61	5303309493	BRACKET, GAS VALVE MTG S/P
64	137076300	PIPE, GAS S/P
65	8015112	CAP, PIPE S/P
70	5303207409	VALVE, GAS
71	5300622602	SOLENOID, SECONDARY COIL
72	5308015680	SOLENOID, BOOSTER COIL
73	5303211036	ORIFICE, NATURAL GAS, SIZE 44
74	134393700	IGNITER ASSY
76	134714400	COLLAR, ALIGNMENT, GAS VALVE
77	134197700	BURNER, GAS S/P
79	5303281135	SENSOR, RADIANT S/P
80	131168200	SCREW, PAN HEAD, 8-18B X 0.31
80A	131712401	TUBE, BURNER S/P
85	134287300	SHIELD, HEAT S/P
86	134264800	PLATE, ADAPTER S/P
87	131964400	CABLE TIE, PUSH MOUNT, 5.20 INCH S/P
NI	134391000	LP CONVERSION KIT, NATURAL TO LP

FFLG1011MW2

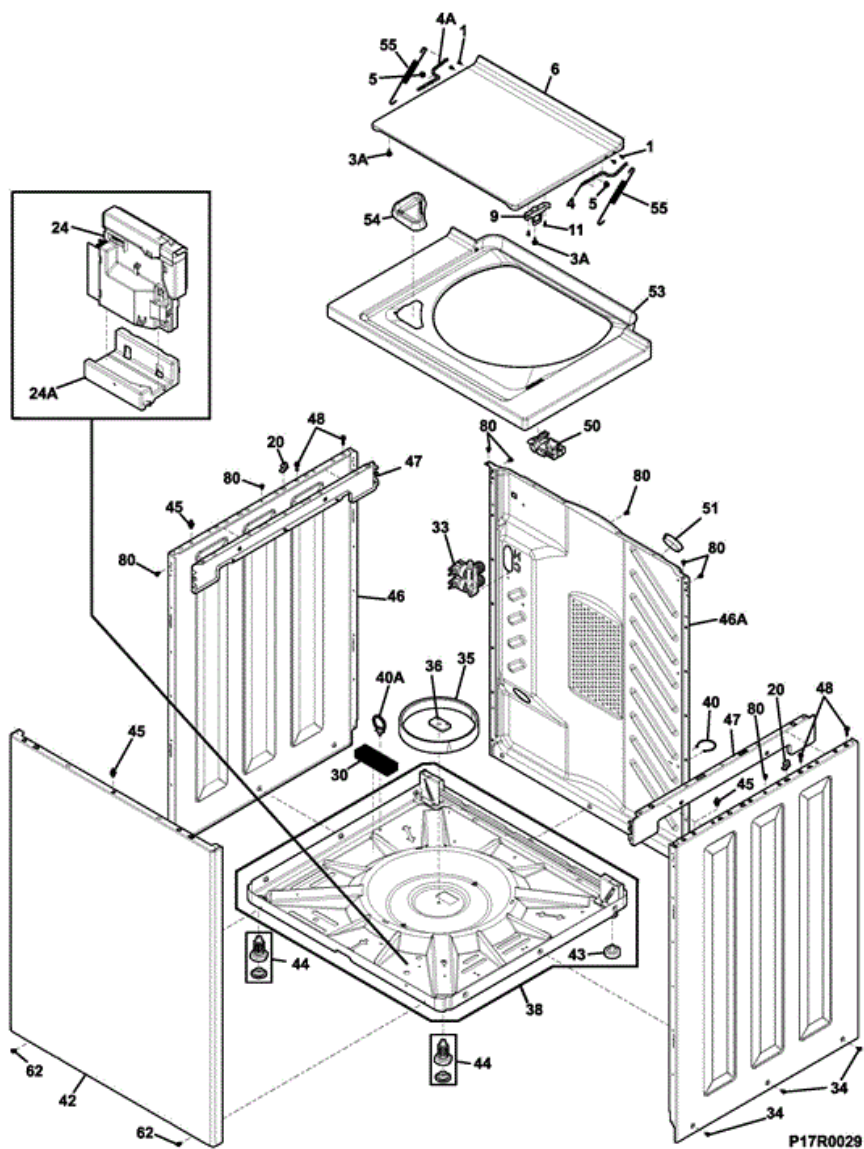


P17C0099

FFLG1011MW2

1	137275305	CONTROL BOARD, MAIN, W/HOUSING
3	137329200	WIRING HARNESS, LC DRYER S/P
4	137191300	KNOB, SWITCH S/P
6	137156200	HARNESS, UI, WASHER, LC S/P
8	137332702	PC BOARD, COMMUNICATION, W/HOUSING
15	137493300	SWITCH, PTS CYCLE, 8 POSITION S/P
18	137518410	CONSOLE, DECORATED, WHITE S/P
21	137489800	Knob, Cycle Selector S/P
22	131205100	SCREW, #8 PAN HEAD, 10-10B X 0.500, CR/SQ DRIVE S/P
23	137161400	HARNESS, MAIN, LC S/P
29	137303800	HARNESS, MAIN, LC-D-GAS S/P
32	5303321209	CABLE TIE, 5.60 INCH, PLASTIC S/P
39	137052500	SWITCH, OPTION 3 POS S/P
80	134402900	Screw, phillips, 6-19 x 0.650 S/P

FFLG1011MW2

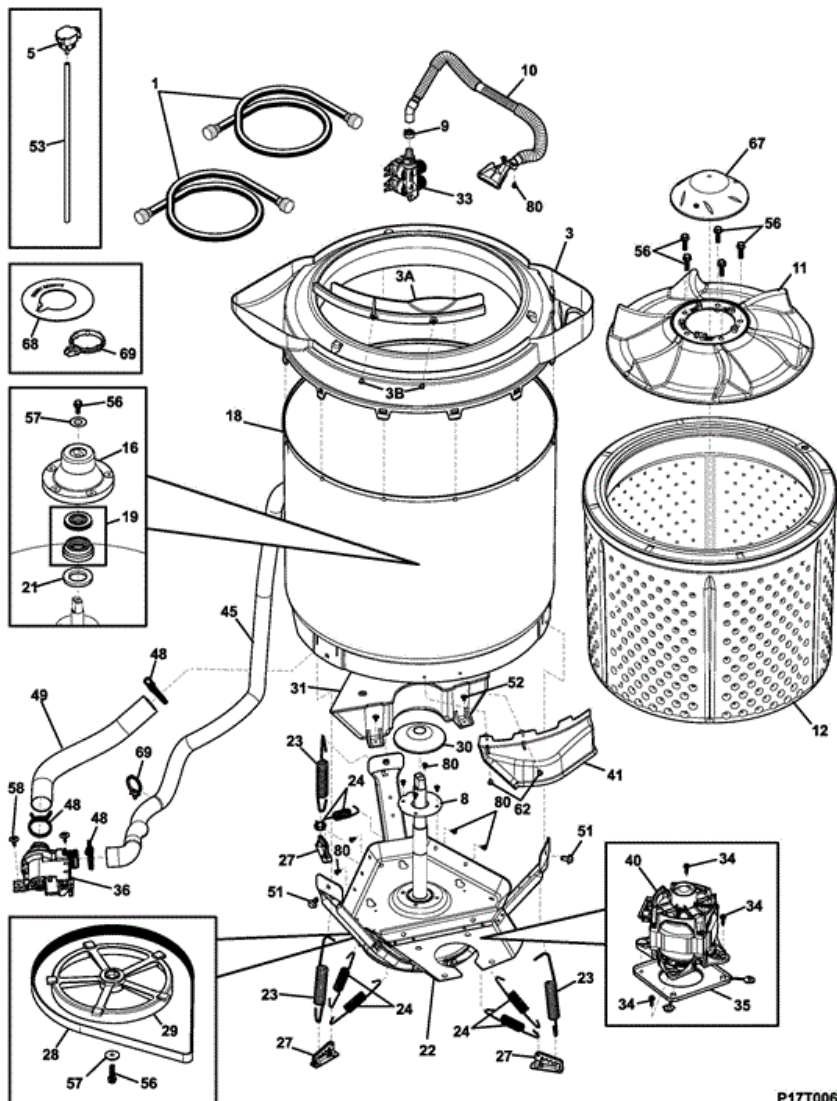


FFLG1011MW2

1	134203900	SCREW, PAN HD PHILLIPS, 6-32 X 0.337, DOG POINT S/P
24A	137469200	BASE, MOTOR CONTROL S/P
4	137469900	HINGE BAR, RH, LC S/P
5	5304488483	GROMMET, HINGE, ACETAL S/P
6	5303212872	LID, WASHER, WHITE S/P
9	137513710	STRIKER, LID, WHITE S/P
11	3204368	SCREW, LID STRIKE MTG, 6-20B X 0.375 S/P
20	3204374	PIN, SLIDE, SIDE TO TOP S/P
24	137469113	CONTROL, MOTOR, MAIN PC BOARD
30	131663500	CUSHION, DRAIN HOSE, BASE S/P
33	137353500	VALVE-2 COIL, 120V, WATER S/P
34	131205500	SCREW, CAB BODY, 1/4-14 X 0.625, SIDE-TO-BASE S/P
35	5308002385	SNUBBER RING
36	3204380	SHIPPING BLOCK S/P
38	137364600	BASE ASSEMBLY, SELF-LEVELING S/P
3A	134075500	BUMPER, LID, FRONT S/P
40	5303309503	CLIP, DRAIN HOSE, BACK SHEET S/P
40A	134261300	CLIP, DRAIN HOSE, PUSH-MOUNT S/P
42	137455410	PANEL, FRONT, LC S/P
43	131422200	PAD, SELF LVLG LEG, REAR S/P
44	5303309673	LEG, LEVELING W/PAD
45	131346401	PIN, PANEL LOCATOR, FRONT S/P
46	137272610	PANEL, WASHER SIDE, WHITE, LH/RH S/P
46A	137273201	PANEL, WASHER BACK, WASHED S/P
47	137304500	BRACKET, MARRIAGE, LH/RH WASHER S/P
48	137329800	SCREW 12-24 UNC X .75 HEX, WASHER S/P
4A	137470900	HINGE BAR, LH, LC S/P

50	137353300	LOCK, LID, EXTERNAL SWITCH
51	131453000	BUSHING, SNAP-IN S/P
53	137190810	PANEL, WASHER TOP LC, WHITE S/P
54	5304488476	DISPENSER, BLEACH, LC S/P
55	134890500	SPRING, LID ASSIST S/P
62	131258400	SCREW, 10-16AB X 0.500 S/P
80	131168200	SCREW, PAN HEAD, 8-18B X 0.31 S/P

FFLG1011MW2



FFLG1011MW2

1	137472301	HOSE ASMY, WATER INLETS, 4 FT., HOSE & WASHER S/P
3	137305200	COVER, SPLASH TUB, WITH SEAL S/P
10	137308000	HOSE, FILL NOZZLE ASY S/P
11	137494000	WASH PLATE S/P
12	137492900	TUB, SPIN, W/O LINT FILTER S/P
16	137489100	TRUNNION, STANDARD S/P
18	137326200	TUB, SPLASH, W/AIR DOME/BRNG S/P
19	137547700	TUB SEAL KIT S/P
21	137272000	GROMMET, SEAL S/P
22	137513900	LEG, DOME & BRACKETS, ASSEMBLY S/P
23	134885900	SPRING, VERTICAL
24	137272300	SPRING, HORIZONTAL S/P
27	137491600	RETAINER, INSERT, SPRING S/P
28	137051400	BELT, POLY V S/P
29	137489000	PULLEY, DRIVE, 250 MM S/P
30	137049800	SHIELD, SLINGER S/P
31	137466600	COUNTERWEIGHT S/P
33	137353500	VALVE-2 COIL, 120V, WATER S/P
34	137470600	SCREW, QUAD HEX, 12-14 X 0.75 S/P
35	137510300	PLATE, MOTOR ISOLATOR S/P
36	137108100	PUMP, DRAIN
3A	137419200	SHIELD, TUB COVER S/P
3B	131302800	SCREW, QUADREX PH, 10-16AB X 0.5 S/P
40A	137324300	WIRING HARNESS, MOTOR
5	137055800	SENSOR, PRESSURE, LOW FREQ ANALOG
8	137363400	COVER, BEARING
9	5304488479	CLAMP
40	137326000	MOTOR, 3 PHASE, INDUCTION
41	137282900	SHIELD, MOTOR
45	134592700	HOSE, DRAIN
48	131306234	CLAMP, HOSE, WIRE
49	131494800	HOSE, PUMP TO TUB
51	137466300	SCREW, HEX WASHER HEAD, 5/16 X 0.625, SPECIAL
52	5304488469	SCREW #10-16 X .625 COMB, PAN

53	5303292722	TUBING, VINYL, 16
56	137050600	SCREW 5/16-18-2A, UNC X 1.25
57	137489500	WASHER, FLAT
58	134160900	SCREW, WASHER HD, 10-16AB X 0.75
62	131258400	SCREW, 10-16AB X 0.500
67	137193200	CAP, WASH PLATE
68	131707800	RING, DRAIN HOSE
69	5303309503	CLIP, DRAIN HOSE, BACK SHEET
80	137511100	SCREW, HEX HEAD, 10-24 X 0.500, TYPE F
NIA	131453000	BUSHING, SNAP-IN
NIA	131901400	SEAL, SPLASH COVER
NIB	131663500	CUSHION, DRAIN HOSE, BASE
NIB	137457100	BRACKET, MOTOR, TLW, LC
NIC	134261300	CLIP, DRAIN HOSE, PUSH-MOUNT
NID	134745300	CLIP, DRAIN HOSE

