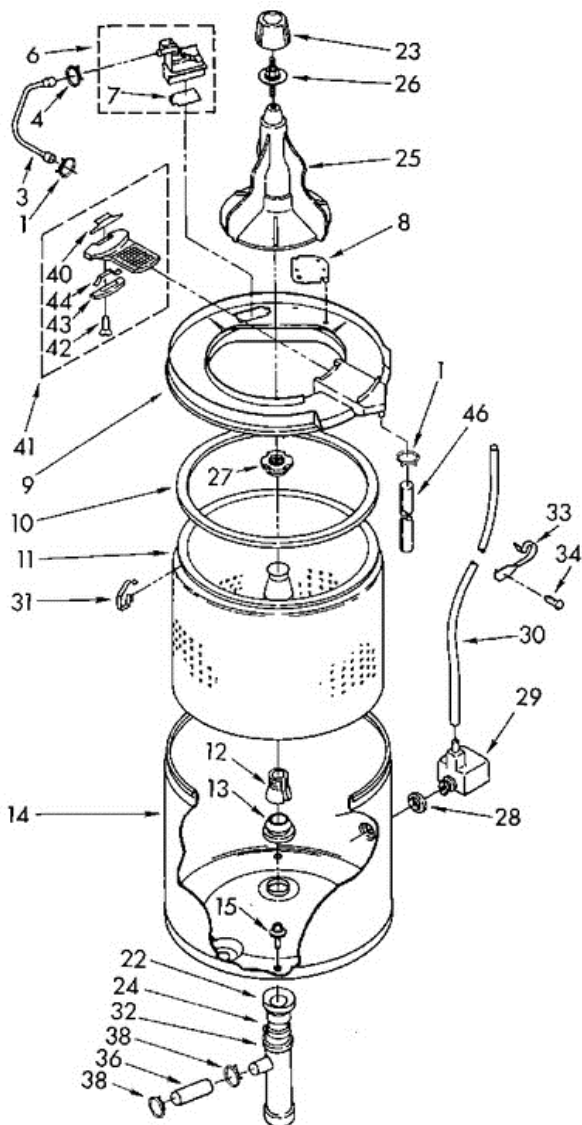


Distribuidor Autorizado

**SurteRápido.com**

Venta de Refacciones  
Electrodomesticas

LA5500XKW2 TINAS

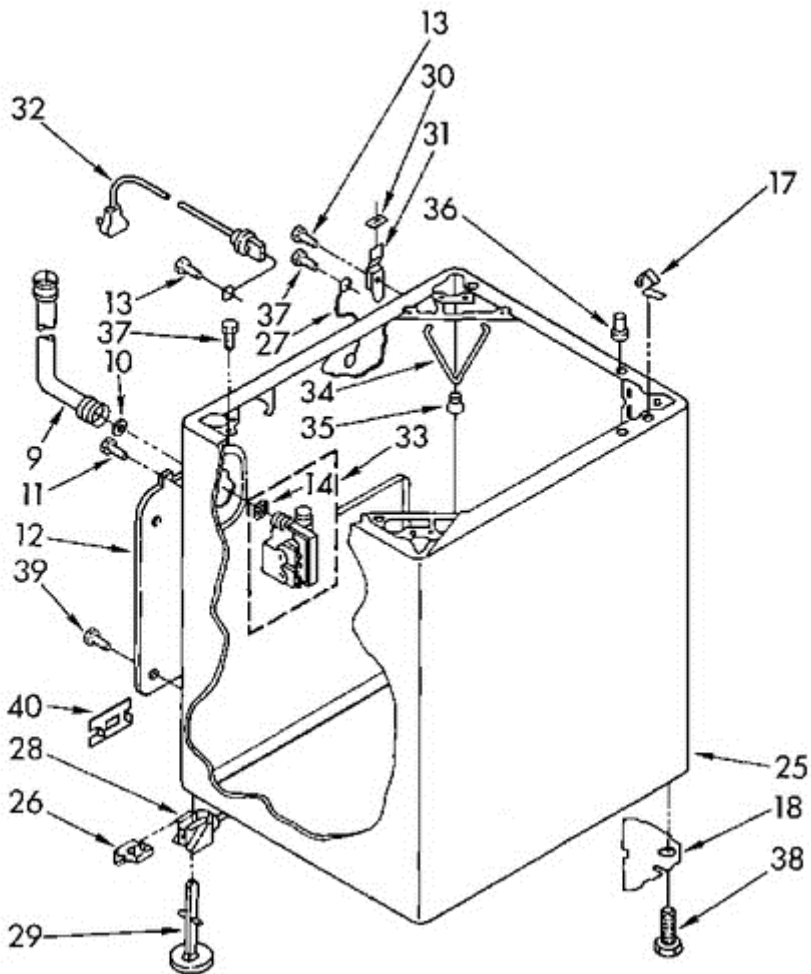




## LA5500XKW2 TINAS

1	272846	CLAMP, HOSE
3	356349	HOSE, WATER INLET
4	272847	CLAMP, HOSE
6	366072	INLET, WATER
7	355584	FLAPPER
8	355852	PLATE, SNUBBER
9	381978	RING & FILTER, TUB (INCLUDES ILLUS. 8 & 41)
10	383553	SEAL, TUB RING
11	383960	BASKET
12	96384	BLOCK, DRIVE
13	96690	GASKET, CENTERPOST
14	384123	TUB
15	370571	SCREW & WASHER, TUB (4)
22	93553	HOSE, TUB OUTLET
23	358431	CAP, AGITATOR
24	9421321	CLIP, HOSE
25	363633	AGITATOR & INSERT ASSEMBLY
26	358440	STUD, AGITATOR SHAFT
27	21366	NUT, SPANNER
28	351830	SEAL
29	360804	AIR DOME ASSEMBLY
30	353405	HOSE, PRESSURE SWITCH
31	359763	CLIP, TUB RING (4)
32	84091	MANIFOLD
33	358339	BRACKET, HOSE
36	92231	HOSE
38	272858	CLAMP, HOSE
40	357249	LATCH
41	359785	FILTER
42	176360	SCREW (2)
43	357250	RETAINER
44	94403	SPRING
46	357346	HOSE, PUMP TO FILTER

**LA5500XKW2 GABINETE**





## LA5500XKW2 GABINETE

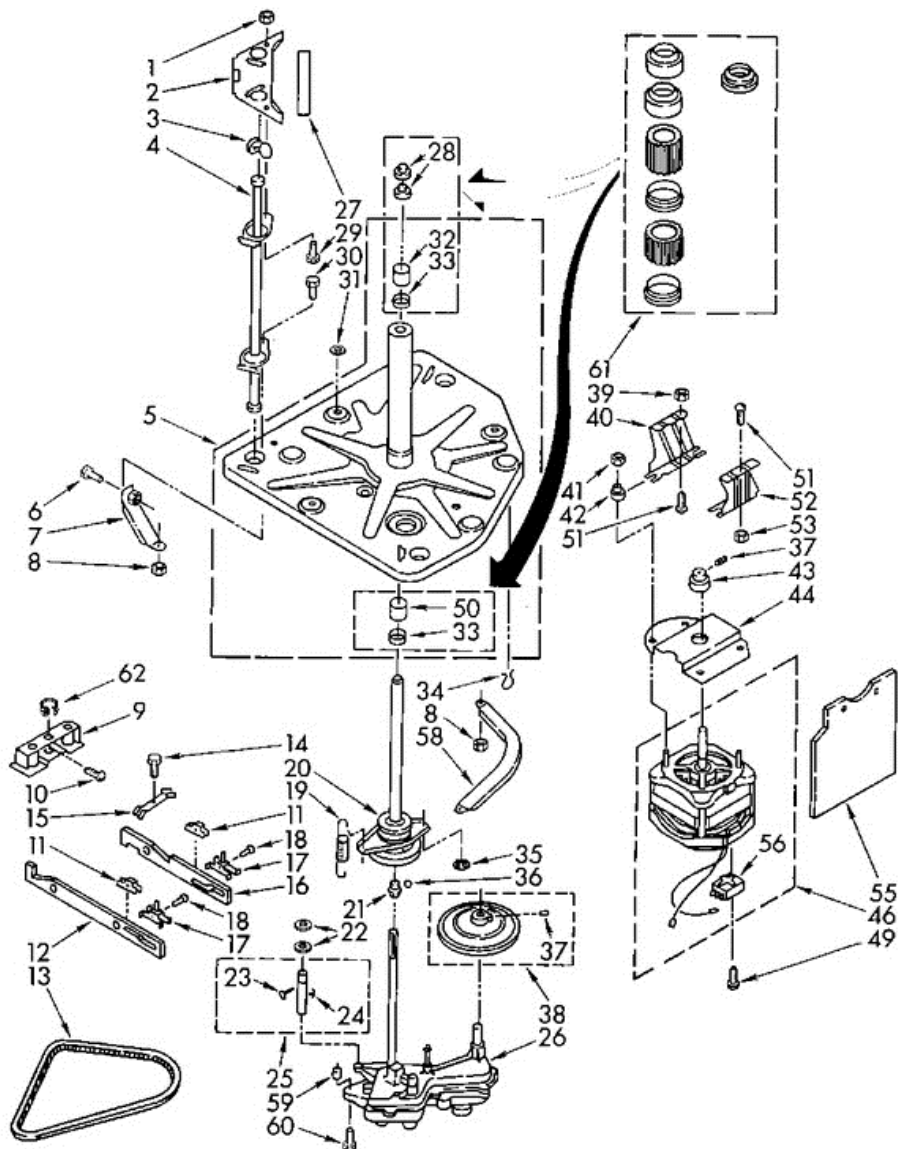
9	81339	HOSE, INLET (2)
10	16123	WASHER, RUBBER (2)
11	62863	SCREW, 10-16 X 3/8
12	85279	PANEL, REAR
13	343641	SCREW, 10-16 X 1/2
14	96160	SCREEN, FILTER
17	18776	LOCK, FRONT TOP (2)
18	356459	PLATE, GUSSET (2)
25	384793	CABINET (WHITE)
25	384794	CABINET (ALMOND)
25	384797	CABINET (GOLDEN HARVEST)
26	359364	CLIP, LEVELING MECHANISM (2)
27	364089	WIRE, GROUND
28	359059	LEVELING LINK ASSEMBLY
29	358594	FOOT, REAR (2)
30	18849	PAD, HINGE
31	18775	HINGE, R.H.
31	92657	HINGE, L.H.
32	92667	CORD, POWER (120 VOLT)
33	358277	VALVE, MIXING (ALT.)
33	358971	VALVE, MIXING (ALT.) (SERVICED ONLY AS COMPLE)
33	660749	VALVE, MIXING
34	357977	SPRING, SNUBBER
35	358336	SNUBBER
36	98669	LOCATOR, TOP (2)
37	359262	SCREW, 10-16 X 1/2
38	367594	FOOT, FRONT (2)
39	687128	SCREW, 10-16 X 1/2
40	354179	PLUG, CABINET

Distribuidor Autorizado

SurteRápido.com

Venta de Refacciones  
Electrodomesticas

LA5500XKW2 BASE



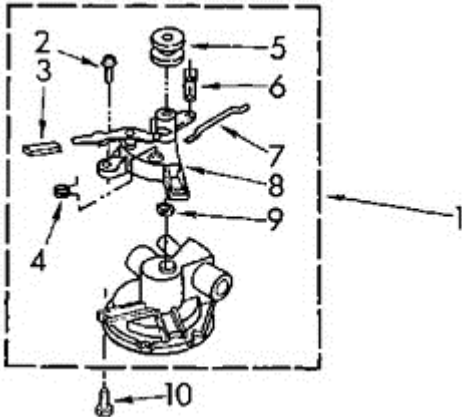


## LA5500XKW2 BASE

1	90984	NUT, 5/16-18
2	352143	COVER, GUSSET (L.R.)
2	353230	COVER, GUSSET (L.F.)
2	94114	COVER, GUSSET (R.R.)
3	91073	BALL, SUSPENSION (6)
4	82584	ROD, SUSPENSION (3)
5	358949	BASEPLATE & CENTERPOST
6	98062	SCREW
7	353301	BRACE, BASEPLATE
8	96101	NUT, 5/16-24
9	359997	MAGNET
10	16135	SCREW, TAPER END
11	95462	GUIDE, CAM BAR
12	354838	CAM, BAR SPIN
13	95405	BELT, ``V``
14	98001	SCREW, 1/4-28 X 1/2
15	94726	SPRING, BRAKE
16	18642	CAM, AGITATOR & PUMP
17	84866	PLUNGER
18	354959	RIVET
19	17261	SPRING, BRAKE YOKE
20	358364	BASKET DRIVE & BRAKE
21	358586	SUPPORT, SPIN TUBE
22	90315	WASHER
23	90532	PIN, ROLL
24	92119	ROLLER, BASKET CLUTCH SHAFT
25	359460	SHAFT, BASKET CLUTCH
26	362901	GEARCASE
27	352434	PAD, GUSSET COVER (4)
28	356934	SEAL, CENTERPOST (2)
29	126211	BOLT, 5/16 X 5/8 (2)
29	126358	BOLT, 5/16 X 1 (3)
29	353770	BOLT, SNUBBER (1)

30	98048	BOLT, 5/16-24
31	17235	GASKET, TUB (7)
32	54207	BEARING, UPPER (1)
33	357409	SEAL, CENTERPOST (2) (ALT.)
33	359449	SEAL, CENTERPOST (2) (ALT.)
33	660943	SEAL, CENTERPOST (2)
34	16515	CLIP, HARNESS
35	356444	RETAINER, BRAKE YOKE
36	358585	BALL
37	355345	SETSCREW, 5/16-18 X 1/2
38	360840	PULLEY, MAIN DRIVE
39	96016	LOCKNUT, 3/8-16
40	85286	BRACKET, MOTOR MOUNTING
41	98023	NUT (4)
42	19138	GROMMET, MOTOR BRACKET (4)
43	357514	PULLEY, MOTOR (60 HZ.)
44	356217	SHIELD, MOTOR (UPPER)
46	357875	MOTOR, 60 HZ. (ALT.) (EMERSON)
46	362856	MOTOR, 60 HZ. (ALT.) (GENERAL ELECTRIC)
46	660198	MOTOR, 60 HZ.
49	9420601	SCREW, MOTOR GROUNDING
50	354195	BEARING, LOWER
51	98537	BOLT, 3/8-16 X 3/4
52	93549	BRACKET, MOTOR MOUNTING
53	95721	NUT, 3/8-16
55	357571	SHIELD, MOTOR
56	359642	SWITCH, MOTOR START ((USE W / GE MOTOR)
56	362738	SWITCH, MOTOR START (USE W/EMERSON MOTOR)
58	351499	BRACE, MOTOR (1)
58	351500	BRACE, MANIFOLD (1)
59	16062	SPACER, STUD & GEARCASE
60	90877	SCREW & WASHER
61	285134	BEARING KIT, CENTERPOST (INCL.. 28, 32, 33 & 50)
62	385728	BUSHING, WIGWAG HARNESS

**LA5500XKW2 BOMBA**







## LA5500XKW2 BOMBA

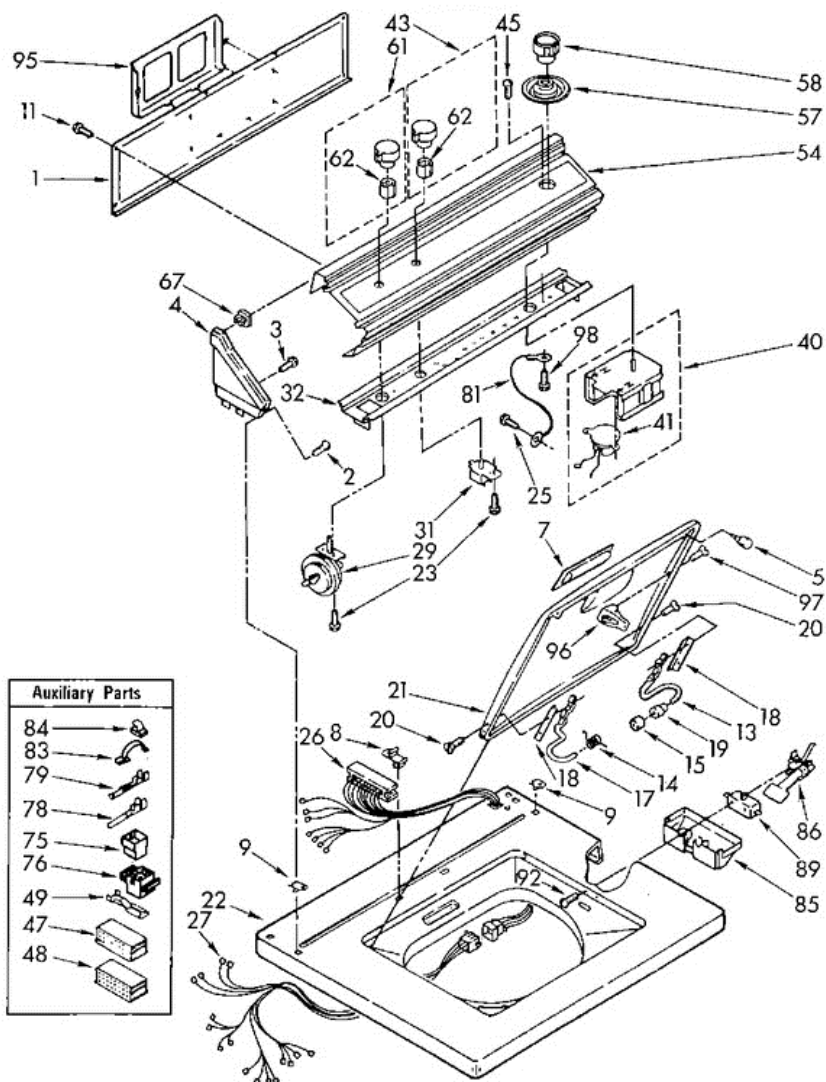
1	357729	PUMP ASSEMBLY
2	273556	SCREW, 10-12 X 5/8
3	96175	SLEEVE
4	96266	SPRING, TOGGLE
5	359630	PULLEY
6	355538	LEVER, VALVE
7	96264	ROD, CONNECTING
8	383750	BEARING BLOCK ASSEMBLY
9	96265	WICK, OIL
10	386011	SCREW & WASHER (2)

Distribuidor Autorizado

SurteRápido.com

Venta de Refacciones  
Electrodomesticas

## LA5500XKW2 TABLERO





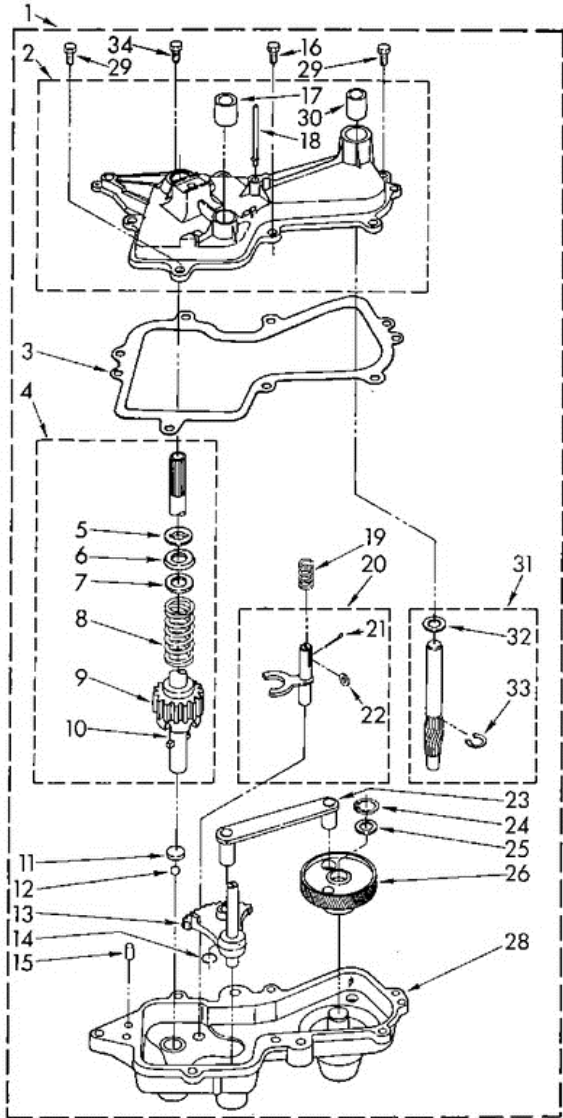
## LA5500XKW2 TABLERO

1	359372	PANEL, REAR CONSOLE
2	358225	SCREW, 8 X 7/8
3	355326	SCREW, 13/16 X 5/8 (4)
4	375305	CAP, END (L.H.) (WHITE)
4	375309	CAP, END L.H. (WHITE)
4	375313	CAP, END (L.H.) (ALMOND)
4	375315	CAP, END (L.H.) (ALMOND)
4	375318	CAP, END (L.H.) (GOLDEN HARVEST CAP, END (R.H.))
4	377283	CAP, END L.H. (GOLDEN HARVEST)
5	93770	BUMPER, RUBBER
7	379884	HANDLE, LID (WHITE)
7	379885	HANDLE, LID (ALMOND)
7	379888	HANDLE, LID (GOLDEN HARVEST)
8	358472	STOP, PUSH-IN TOP (1)
9	358473	NUT, PUSH-IN (2)
11	359625	SCREW, 8-15 X 1/2
13	91770	HINGE, R.H.
14	92398	SPRING, HINGE (L.H.)
15	91605	BUMPER, LID HINGE
17	91099	HINGE, L.H.
18	21097	PAD, HINGE
19	21258	BEARING, HINGE
20	18724	SCREW
21	379964	LID (WHITE)
21	379965	LID (ALMOND)
21	379968	LID (GOLDEN HARVEST)
22	373285	TOP (WHITE)
22	376930	TOP (ALMOND)
22	376933	TOP (GOLDEN HARVEST)
23	90767	SCREW, 8 X 3/8
25	90864	SCREW, 10 X 3/8
26	359327	HARNESS, CONSOLE
27	358115	HARNESS, BASE

29	359647	SWITCH, WATER LEVEL (ALTERNATE)
29	363301	SWITCH, WATER LEVEL (ALT.)
29	660930	SWITCH, WATER LEVEL
31	358934	SWITCH, WATER TEMPERATURE (ALT.)
31	358935	SWITCH, WATER TEMPERATURE (ALT.)
31	660746	SWITCH, WATER TEMPERATURE
32	359708	BRACKET, CONTROL
40	365941	MOTOR, TIMER (60 HZ.) (USE W/MALLORY TIMER)
40	385322	TIMER, 60 HZ. C.C.A. (ALT.)
40	385325	TIMER, 60 HZ. C.C.A. (ALT.) MALLORY
40	660970	TIMER, 60 HZ. C.C.A.
41	362681	MOTOR, TIMER (60 HZ.) (USE W/C.C.A. TIMER)
43	690300	KNOB ASSEMBLY, WATER TEMPERATURE
45	96435	SCREW, 10-32 X 5/16
47	352089	BLOCK, DISCONNECT
48	352090	BLOCK, DISCONNECT
49	352088	TERMINAL, FEMALE
54	382410	PANEL, CONTROL
57	359254	DIAL, TIMER
58	359206	KNOB, TIMER
61	690297	KNOB ASSEMBLY, WATER LEVEL
62	688805	CLIP, CONTROL KNOB
67	689559	CLIP, END CAP
75	94612	CAP, TERMINAL (CONSOLE HARNESS)
76	94611	PLUG, TERMINAL (CABINET HARNESS)
78	94613	TERMINAL, (MALE)
79	94614	TERMINAL (FEMALE)
81	54570	WIRE, GROUND
83	98997	CLIP
84	90016	CLIP
85	354289	SHIELD, LID SWITCH
86	370959	SWITCH ACTUATOR ASSEMBLY
89	364090	SWITCH, LID (ALT.)
89	364091	SWITCH, LID (ALT.)
89	367034	SWITCH, LID (ALT.)
89	660308	SWITCH, LID
92	354764	SCREW & WASHER
95	357645	RACK, LITERATURE

96	357633	STRIKE, LID SWITCH
97	354975	SCREW & WASHER
98	343641	SCREW, 10-16 X 1/2

**LA5500XKW2 TRANSMISION**

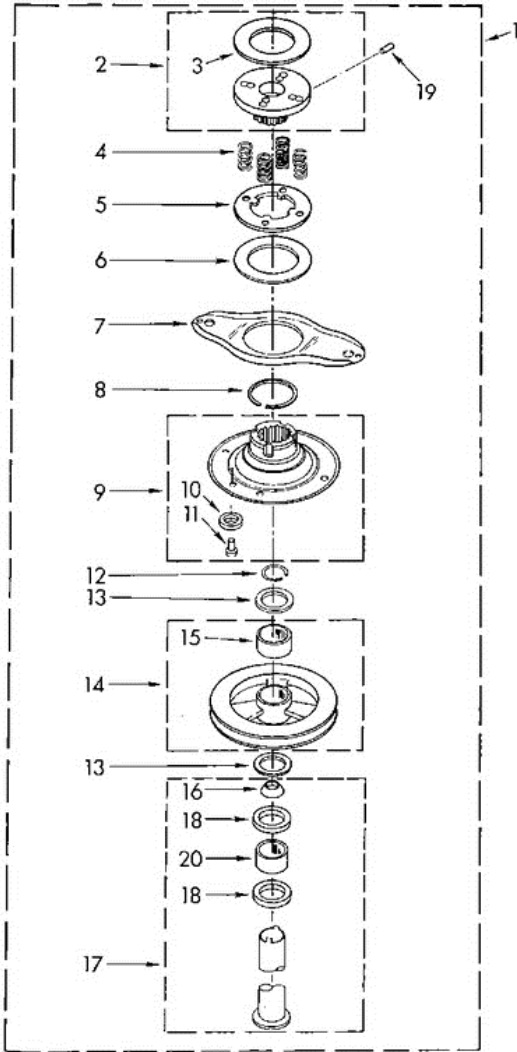




## LA5500XKW2 TRANSMISION

1	362901	GEARCASE (COMPLETE)
2	367552	COVER, GEARCASE
3	95089	GASKET, GEARCASE
4	362642	SHAFT, AGITATOR
5	352430	RING, RETAINER
6	92814	SEAL, AGITATOR SHAFT
7	94276	SHIELD, AGITATOR SPRING
8	92815	SPRING, AGITATOR SHAFT
9	355469	GEAR, AGITATOR SHAFT
10	362098	SHAFT, AGITATOR
11	16018	BEARING, AGITATOR THRUST
12	85529	BALL, AGITATOR SHAFT
13	75073	GEAR, SECTOR
14	52083	RING, RETAINER
15	5018	PIN, DOWEL
16	356599	BOLT, 5/16-24 X 3/4 (4)
17	96853	BEARING, GEAR FORK
18	356445	SUPPORT, BRAKE SHOE YOKE
19	16015	SPRING, GEAR FORK SHAFT
20	80398	FORK, AGITATOR GEAR
21	90532	PIN, GEAR FORK SHAFT
22	92119	ROLLER, GEAR FORK SHAFT
23	76577	ROD, CONNECTING
24	95082	RING, RETAINING
25	95083	WASHER, RETAINER
26	353397	GEAR, MAIN DRIVE
28	362906	GEARCASE
29	356512	BOLT, 5/16-24 X 1-1/8 (2)
30	354513	BEARING, DRIVE PINION
31	84467	PINION, DRIVE
32	16024	WASHER, DRIVE PINION
33	90094	RING, RETAINER
34	350572	OIL, GEARCASE (15 OZ.)

**LA5500XKW2 FLECHA HUECA**



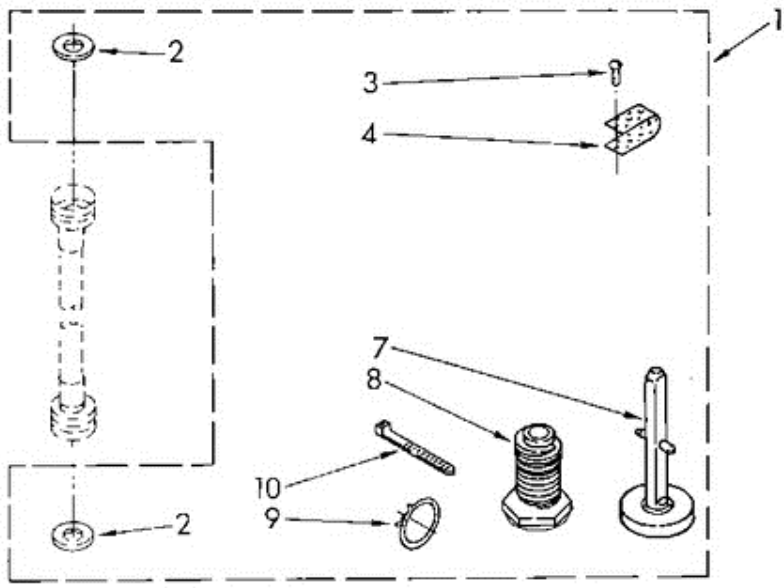




**LA5500XKW2 FLECHA HUECA**

1	358364	BASKET DRIVE & BRAKE
2	350522	DRUM, BRAKE (UPPER)
3	354550	LINING, BASKET BRAKE (UPPER)
4	381046	SPRING, BASKET DRIVE (ORANGE) (4)
5	97664	DRUM, BRAKE (LOWER)
6	354244	LINING, BASKET BRAKE (LOWER)
7	92903	YOKE, BRAKE
8	16049	RING, SNAP
9	357155	PLATE & LINING, BASKET DRIVE
10	354243	LINING, BASKET DRIVE (SET OF 3)
11	98281	EYELET (3)
12	90368	RING, RETAINING
13	353320	WASHER, THRUST (2)
14	364032	PULLEY, BASKET DRIVE
15	16033	BEARING, DRIVE PULLEY
16	91939	SEAL. OIL
17	357965	DRIVE TUBE & BEARING, BASKET
18	356427	SEAL, DRIVE TUBE
19	356057	SET SCREW, 5/16-18X 13/16
20	356937	SPACER, AGITATOR SHAFT

LA5500XKW2 PATA





## LA5500XKW2 PATA

1	387200	MISCELLANEOUS PARTS BAG
2	16123	WASHER, INLET HOSE (4) (1-1/16 X 5/8) (4)
3	132848	SCREW, GROUND (10-24 X 1)
4	22965	STRAP, GROUND
7	358594	FOOT, REAR (2)
8	367594	FOOT, FRONT (2)
9	356138	CLAMP, HOSE
10	386566	TIE, CABLE