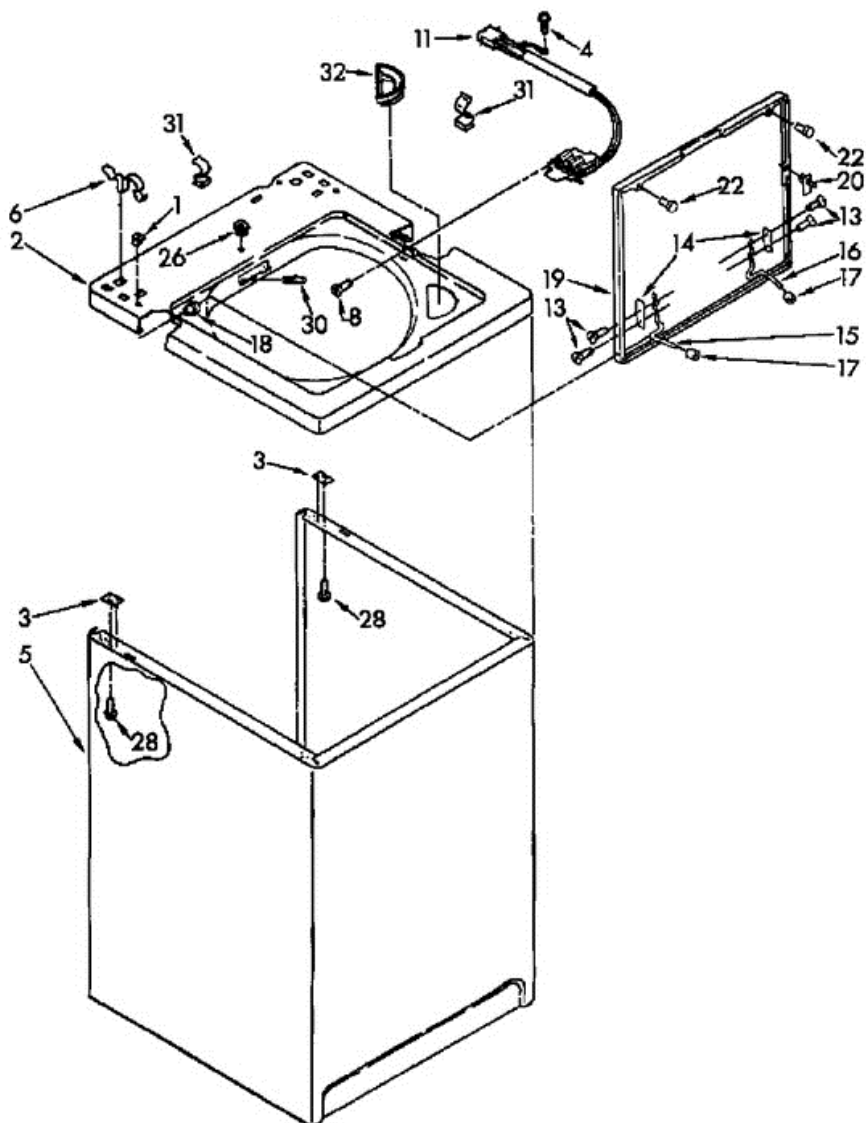


Distribuidor Autorizado

SurteRápido.com

Venta de Refacciones  
Electrodomesticas

## LA5580XTN1 GABINETE





## LA5580XTN1 GABINETE

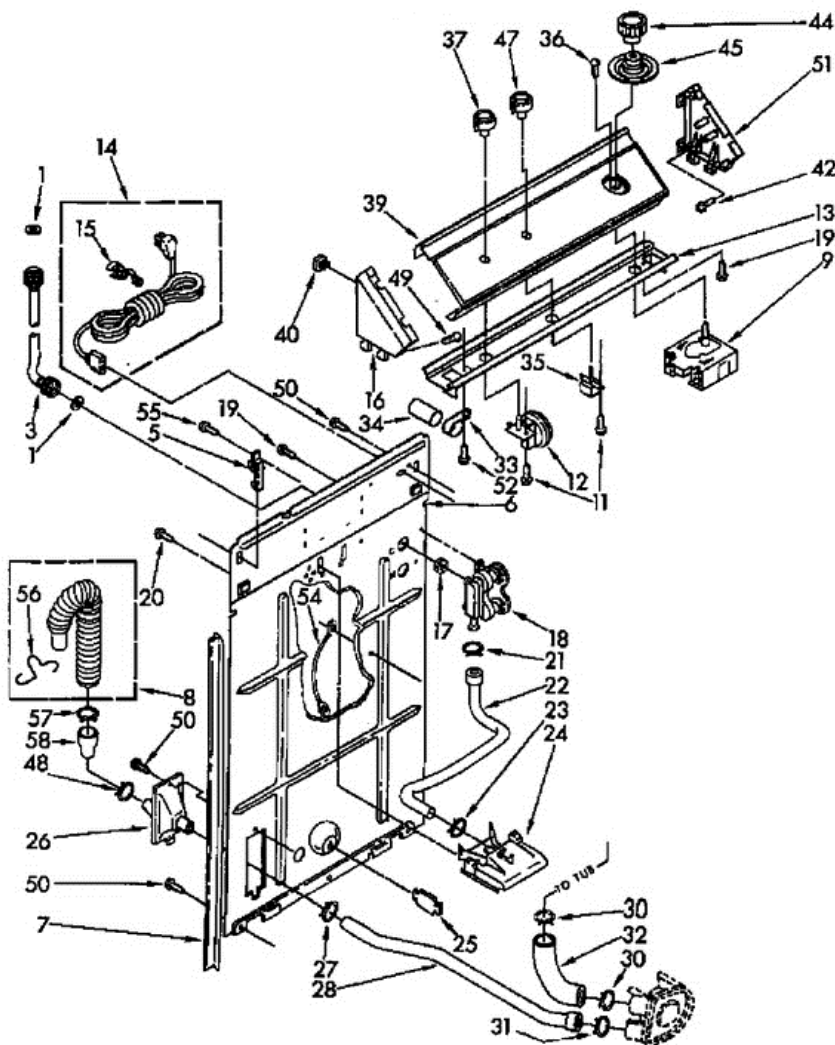
1	358473	NUT, PUSH-IN (2)
2	388351	TOP (WHITE)
2	388352	TOP (ALMOND)
2	388353	TOP (TOAST)
2	388354	TOP (PLATINUM)
2	388355	TOP (GOLDEN HARVEST)
3	62750	SPACER, CABINET TO TOP (4)
4	687128	SCREW, 10-16 X 1/2
5	63424	CABINET (WHITE)
5	63425	CABINET (ALMOND)
5	63426	CABINET (TOAST)
5	63427	CABINET (PLATINUM)
5	63428	CABINET (GOLDEN HARVEST)
6	62780	CLIP, TOP & CABINET & REAR PANEL (2)
8	3356311	SCREW & WASHER, LID SWITCH (2)
11	3352629	SWITCH, LID
14	21097	PAD, LID HINGE (2)
15	54584	HINGE, LID (L.H.)
16	54583	HINGE, LID (R.H.)
17	19119	BUMPER, LID HINGE
18	21258	BEARING, LID HINGE (2)
19	3354570	LID (WHITE)
19	3354571	LID (ALMOND)
19	3354572	LID (TOAST)
19	3354573	LID (PLATINUM)
19	3354574	LID (GOLDEN HARVEST)
20	358684	STRIKE, LID SWITCH
22	93770	BUMPER, LID (2)
26	358472	STOP, PUSH-IN TOP
28	384435	SCREW, 10-16 X 1/2 (4)
30	354239	RIVET, SERIAL NAMEPLATE
31	90016	CLIP, HARNESS
32	63289	BEZEL, BLEACH DISPENSER

Distribuidor Autorizado

SurteRápido.com

Venta de Refacciones  
Electrodomesticas

## LA5580XTN1 TABLERO



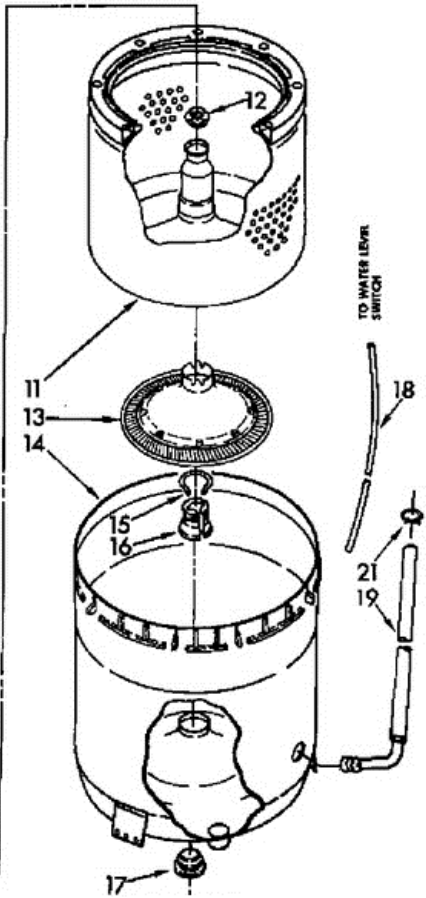
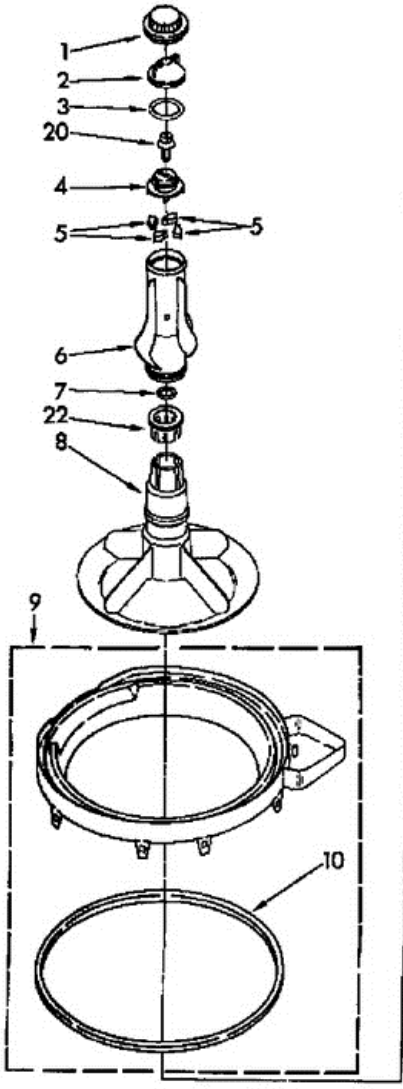


## LA5580XTN1 TABLERO

1	16123	WASHER, WATER INLET HOSE (4) (1-1/16 X 5/8)
3	366108	HOSE, WATER INLET (2) (ALT.)
3	385057	HOSE, WATER INLET (2) (ALT.)
3	660028	HOSE, WATER INLET (2)
3	81339	HOSE, WATER INLET (2) (ALT.)
5	387402	HINGE, CONSOLE (2)
6	3348430	PANEL, REAR
7	62747	PAD, REAR PANEL
8	387325	HOSE, CORRUGATED PLASTIC DRAIN (5-1/2 FT.)
8	388418	HOSE, CORRUGATED PLASTIC DRAIN (10 FT.)
9	3351811	TIMER, CONTROL (60 HZ.)
11	90767	SCREW, 8A X 3/8
12	64189	SWITCH, WATER LEVEL
13	3349983	BRACKET, CONTROL
14	62734	CORD, POWER
15	63848	STRAIN RELIEF, POWER CORD
16	63789	CAP, END (L.H.)
17	96160	SCREEN, FILTER (2)
18	358992	VALVE, WATER MIXING
19	90864	SCREW, 10-24 X 3/8 (2)
20	690989	SCREW, GROUND
21	272846	CLAMP, HOSE (ALT.)
21	353367	CLAMP, HOSE (ALT.)
21	660632	CLAMP, HOSE
22	62662	HOSE, VACUUM BREAK
23	371503	CLAMP, HOSE
24	387606	BREAK, VACUUM
25	63290	SUPPORT, REAR PANEL
26	3355497	CONNECTOR, DRAIN HOSE
27	356138	CLAMP, HOSE
28	3348552	HOSE, PUMP TO DRAIN CONNECTOR
30	371502	CLAMP, HOSE
31	272858	CLAMP, HOSE (ALT.)

31	353097	CLAMP, HOSE (ALT.)
31	370447	CLAMP, HOSE (ALT.)
31	660628	CLAMP, HOSE
32	62731	HOSE, PUMP TO TUB
33	357030	CLAMP, CAPACITOR
34	357021	CAPACITOR, MOTOR START (MFD 189, 110 VOLTS)
35	3347117	SWITCH, WATER TEMPERATURE (ALT.)
35	3348352	SWITCH, WATER TEMPERATURE (ALT.)
35	661538	SWITCH, WATER TEMPERATURE
36	96435	SCREW, TIMER MOUNTING (10-32 X 1) (2)
37	386636	KNOB, WATER LEVEL
39	3348083	PANEL, CONSOLE
40	689559	NUT, PUSH-IN (2)
42	355326	SCREW, 13/16 X 5/8 (4)
44	3347726	KNOB, TIMER
45	64140	DIAL, TIMER
47	386636	KNOB, WATER TEMPERATURE
48	356138	CLAMP, HOSE
49	64211	SCREW, 8-18 (2) (PANEL TO TOP)
50	62863	SCREW, 10-16 X 3/8
51	63795	CAP, END. (R.H.)
52	343641	SCREW, 10-16 X 1/2
54	364089	WIRE, GROUND
55	3393008	SCREW, HINGE TO REAR PANEL (10-16 X 1/2) 2
56	3350222	RETAINER, WIRE
57	371504	CLAMP, HOSE
58	384496	COUPLING, HOSE

LA5580XTN1 TINAS

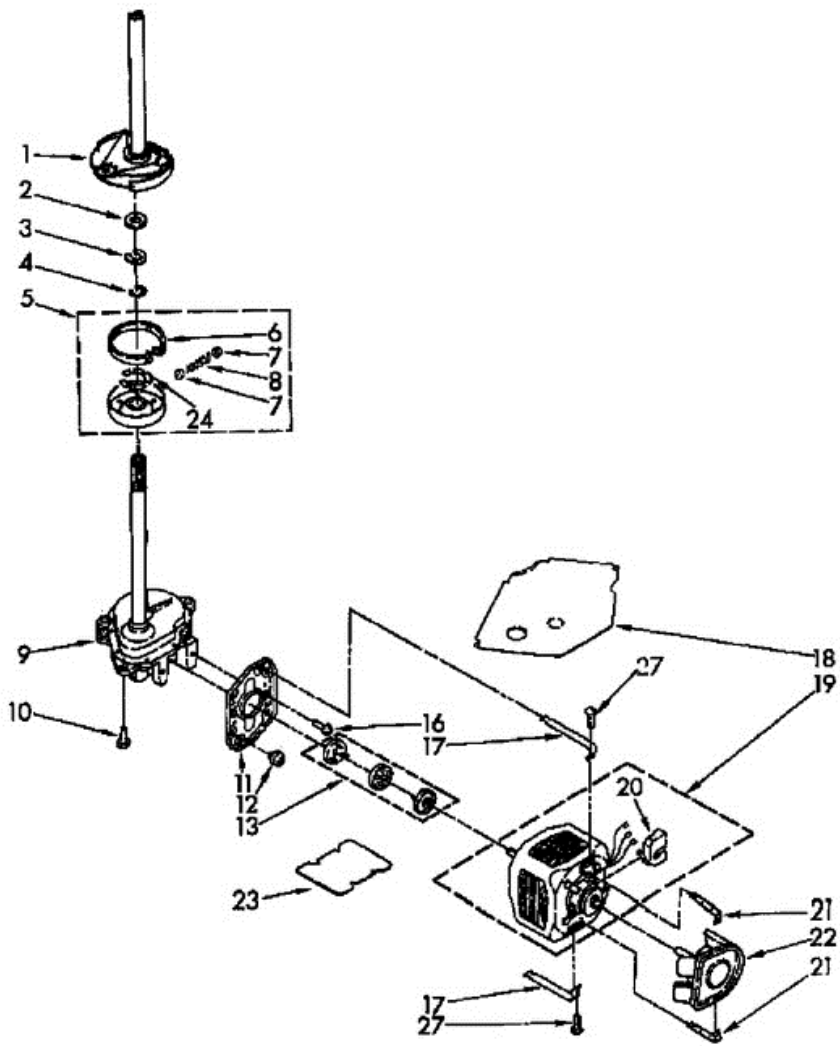




## LA5580XTN1 TINAS

1	3355758	CAP, AGITATOR
2	3347290	CAP, BARRIER
3	3348855	SEAL, INNER AUGER
4	3351001	CAM, AGITATOR
5	387091	DOG, AGITATOR CLUTCH (4)
6	3348752	CLOTHES MOVER
7	357574	SEAL, AGITATOR
8	3347288	AGITATOR
9	63851	TUB RING
10	63852	GASKET, TUB RING
11	64217	BASKET
12	21366	NUT, SPANNER
13	62941	FILTER, PLATE
14	388893	TUB
15	62942	LOCK, FILTER
16	389140	BLOCK, DRIVE
17	383727	GASKET, CENTERPOST
18	386757	HOSE, PRESSURE SWITCH
19	63323	HOSE, BLEACH
20	358237	SCREW & WASHER
21	356436	CLAMP, HOSE
22	3350389	SPACER, THRUST

**LA5580XTN1 MOTOR**







## LA5580XTN1 MOTOR

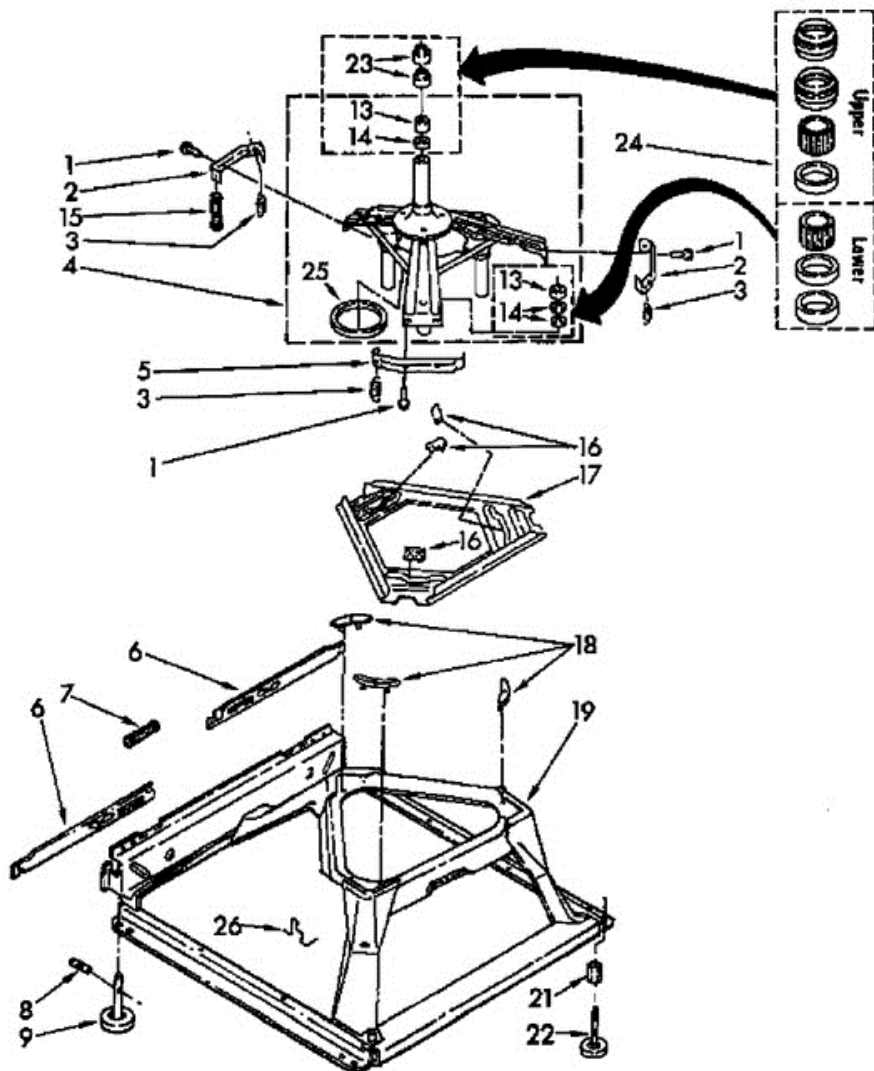
1	388952	BRAKE & DRIVE TUBE (COMPLETE)
2	63292	WASHER, SPIN TUBE THRUST
3	62697	RING, SPIN TUBE SUPPORT
4	63283	RING, RETAINER
5	3350115	CLUTCH (COMPLETE)
6	388190	BAND & LINING, CLUTCH (INCLUDES ILLUS. 7 & 8)
7	62646	CAP, CLUTCH SPRING (2)
8	3354731	SPRING, CLUTCH
9	389246	GEARCASE (COMPLETE)
10	62735	SCREW, GEARCASE TO BASE (3) (5/16-24 X 3/4)
11	62611	PLATE, MOTOR MOUNT TO GEARCASE
12	62691	GROMMET, MOTOR (4)
13	62693	COUPLING, MOTOR AND ISOLATION
16	98062	SCREW, 5/16-24 X 5/8 (2)
17	3349637	RETAINER, MOTOR (2)
18	3349282	SHIELD, TUB TO MOTOR
19	3349644	MOTOR, MAIN DRIVE
20	62850	SWITCH, MAIN DRIVE MOTOR
21	62700	RETAINER, PUMP (2)
22	3352492	PUMP (COMPLETE)
23	3351341	SHIELD, MOTOR
24	3355454	CLIP, ANTI-RATTLE
27	357640	SCREW

Distribuidor Autorizado

SurteRápido.com

Venta de Refacciones  
Electrodomesticas

LA5580XTN1 BASE

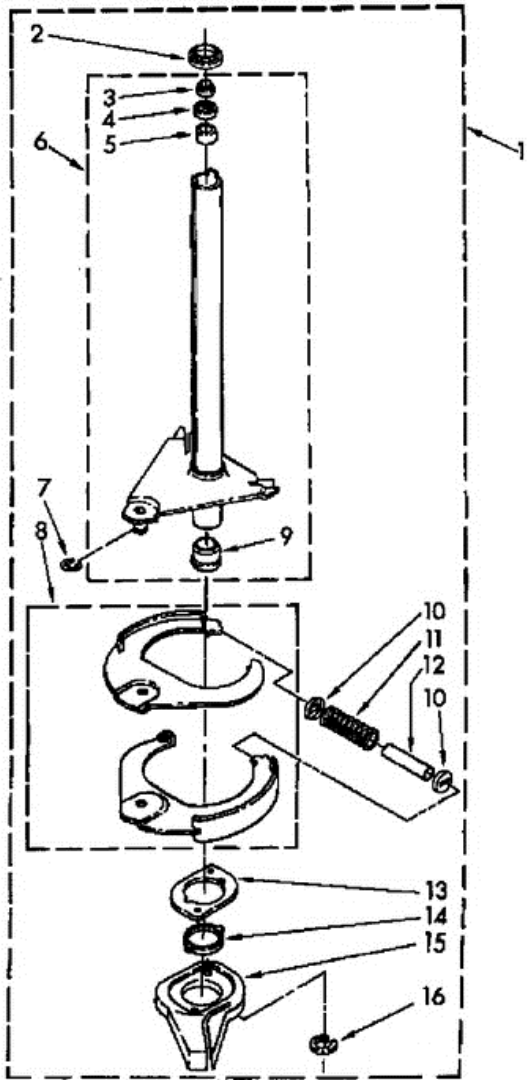




## LA5580XTN1 BASE

1	98610	SCREW, BRACKET MOUNTING (10-16 X 5/8) (6)
2	64067	BRACKET, SPRING OUTER (2)
3	63907	SPRING, SUSPENSION (3)
4	389350	SUPPORT & BRAKE, TUB
5	64065	BRACKET, SPRING OUTER (L.F.)
6	3348727	LINK, LEVELING MECHANISM (2)
7	62597	SPRING, LEVELING MECHANISM
8	62837	PIN, KNURLED
9	62596	FOOT, REAR (2)
13	3347047	BEARING, CENTERPOST (2)
14	357409	SEAL, CENTERPOST (3)
15	388492	SPRING, COUNTERWEIGHT
16	62568	PAD, PLATE
17	389299	PLATE, SUSPENSION (INCLUDES ILLUS. 16)
18	62602	PAD, BASE
19	3352259	BASE ASSEMBLY (INCLUDES ILLUS, 6, 7, 8, 9, 18 & 26)
21	62739	NUT, LOCK (3/8-16) (2)
22	389102	FOOT, FRONT (2)
23	356934	SEAL, CENTERPOST (2)
24	285203	CENTERPOST BEARING KIT (INCLUDES 13, 14 & 23)
25	63134	RING, SOUND DEADENING
26	63806	RETAINER, SUSPENSION SPRING

**LA5580XTN1 FLECHA HUECA**

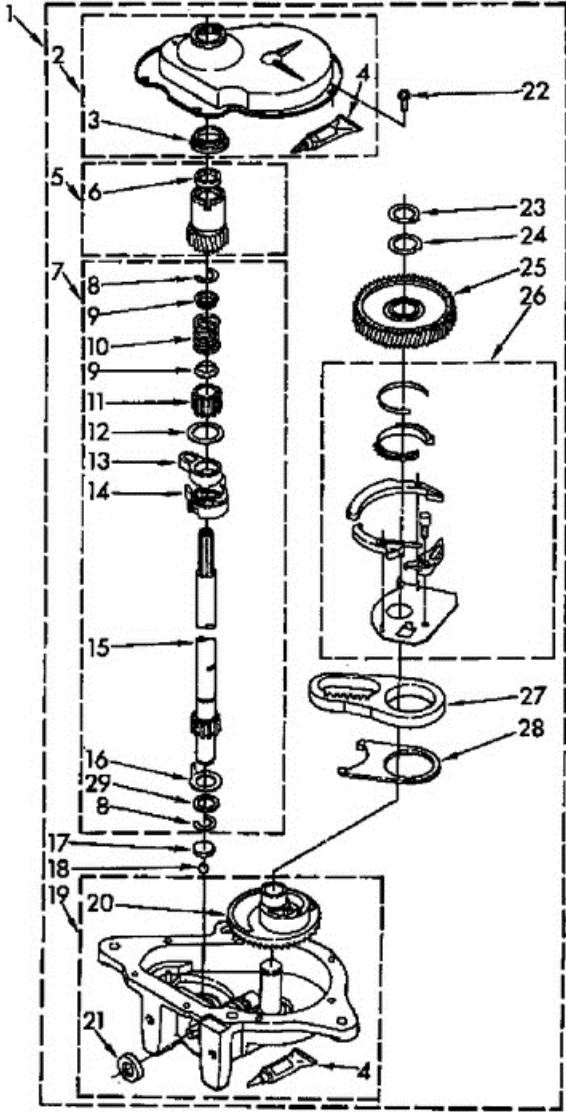




## LA5580XTN1 FLECHA HUECA

1	388952	BRAKE AND DRIVE TUBE (COMPLETE)
2	62658	RING, THRUST
3	91939	SEAL. OIL
4	356427	SEAL, DRIVE TUBE
5	356937	SPACER, DRIVE TUBE
6	64027	TUBE, BASKET DRIVE (INCLUDES ILLUS. 3, 4, 5 & 9)
7	64035	RING, RETAINING
8	64232	SHOE, BRAKE
9	62703	``T`` BEARING, SPIN TUBE
10	62648	CAP, BRAKE SPRING (2)
11	387806	SPRING, BRAKE
12	62909	SLEEVE, BRAKE SPRING
13	63023	CAM, BRAKE RELEASE
14	63022	SLEEVE, CAM
15	64194	DRIVER, BRAKE CAM
16	285208	LUBRICANT
16	90368	RING, RETAINING

**LA5580XTN1 TRANSMISION**





## LA5580XTN1 TRANSMISION

1	389246	GEARCASE (COMPLETE)
2	62685	COVER, GEARCASE
3	3347188	SEAL, GEARCASE COVER
4	285195	SEALER, GASKET (.20 FL. OZ.) (6 ML)
5	63320	PINION, SPIN (INCLUDES ITEM 25)
6	356427	SEAL, SPIN PINION
7	389387	SHAFT, AGITSTOR (COMPLETE)
8	90369	RING, RETAINING (2)
9	62677	RETAINER, SPRING (2)
10	62676	SPRING, AGITATOR
11	63273	GEAR, AGITATOR
12	62619	WASHER, AGITATOR GEAR
13	62580	FOLLOWER, CAM
14	62581	CAM, AGITATOR
15	389231	SHAFT, AGITATOR
16	62618	WASHER, CAM THRUST
17	16018	BEARING, THRUST
18	85529	BALL, BEARING
19	389229	BOTTOM AND PINION, GEARCASE
20	62528	GEAR, MAIN DRIVE
21	285352	SEAL, THRUST PLUG
22	90864	SCREW, GEARCASE COVER MOUNTING (8)
23	95082	RING, RETAINING
24	285292	WASHER KIT, THRUST
25	62570	GEAR, SPIN
26	388253	NEUTRAL ASSEMBLY
27	62534	RACK, CONNECTING
28	62621	ACTUATOR, SHIFT
29	388815	WASHER, INTERMEDIATE