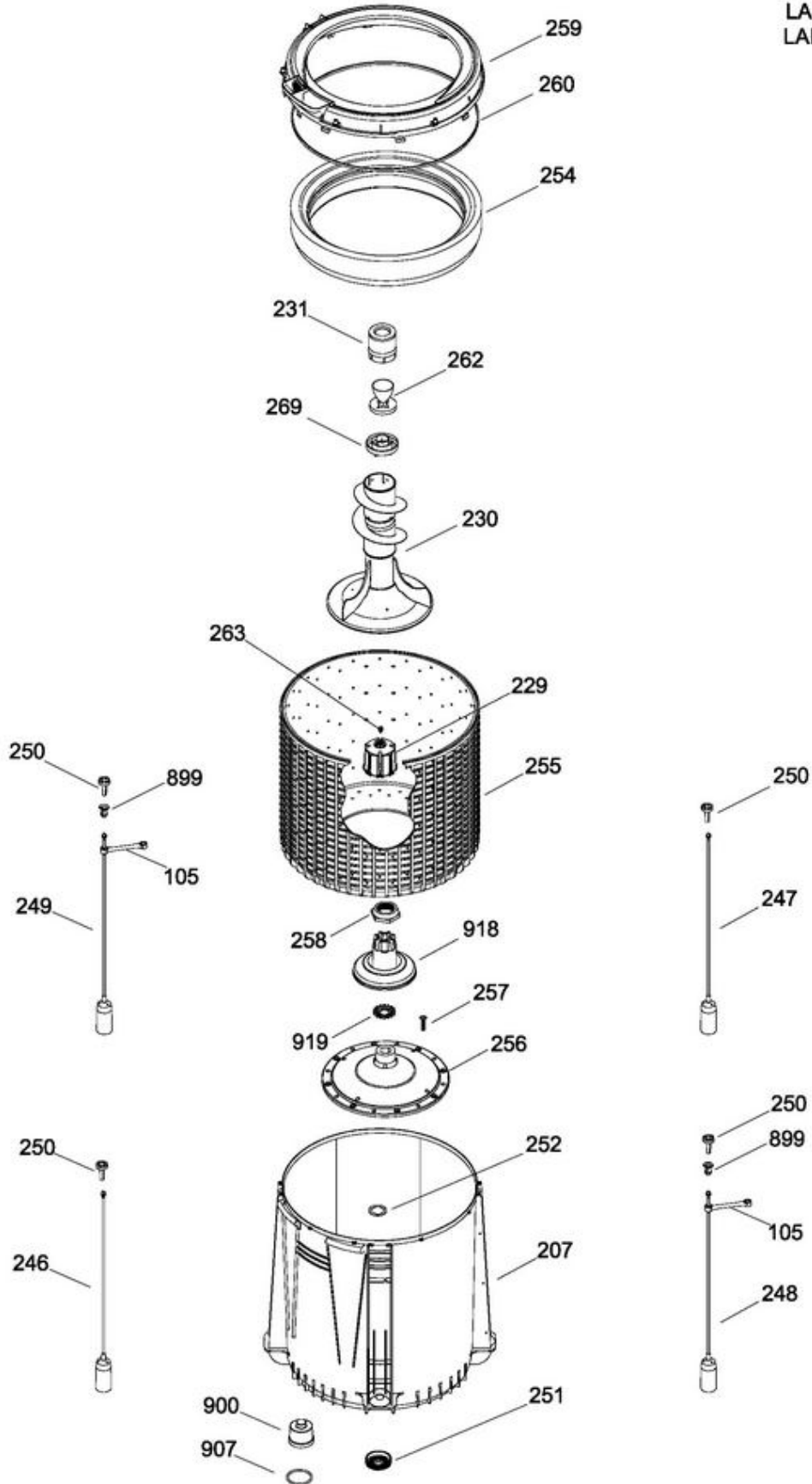


LAVADORA LAE12050PB0

PARTES PARA TINA / TUB, BASKET & AGITATOR

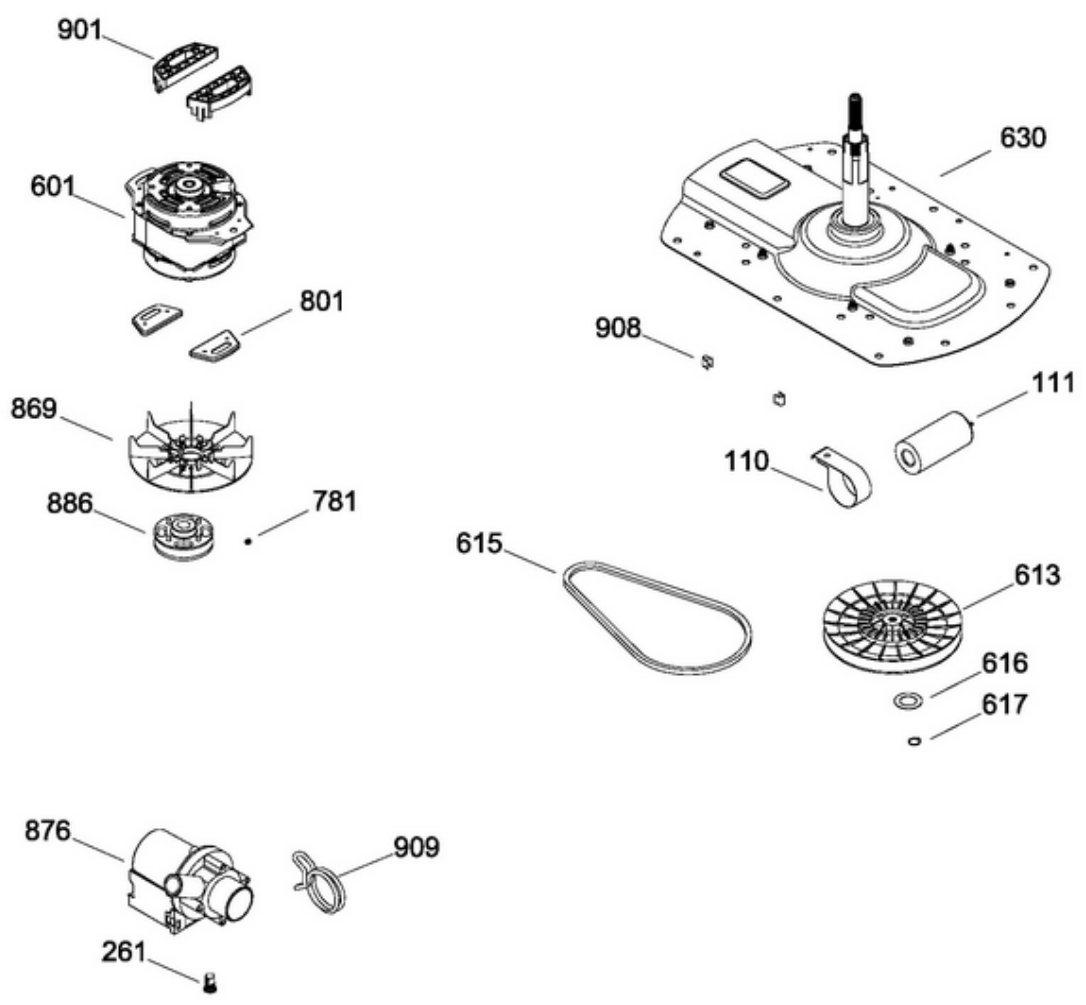
LAE12040PB0
 LAE12040PLO
 LAE12050PB0



LAVADORA LAE12050PB0

SISTEMA MOTRIZ / PUMP & DRIVE COMPONENTS

LAE12040PB0
 LAE12040PL0
 LAE12050PB0





LAVADORA LAE12050PB0

| Guía | Refacción | Descripción |
|------|--------------|--------------------------------|
| 3 | WW01A00085 | BUJE BISAGRA |
| 5 | WW01F00113 | CABLE TOMACORRIENTE |
| 6 | WR01F03137 | PROTECTOR TAPA AMAZONA |
| 7 | WW01F00321 | ENS. VALVULA DE AGUA |
| 8 | WW01L00359 | ENTRADA DE AGUA |
| 9 | WW01A00002 | ABRAZADERA |
| 14 | WW01F00262 | PRESOSTATO |
| 18 | WW01F00156 | ARNES GABINETE |
| 19 | WW01L00330 | MANGUERA PRESOSTATO P/SEMI.IM. |
| 20 | WW01L00178 | ENS. PERILLA ROTATORIA SPLASH |
| 23 | WW01L00174 | ENS. PERILLA CONTROL SPLASH B. |
| 25 | WW01L01036 | MANGUERA LLENADO NEGRA CON MET |
| 27 | 189D3761G006 | ENS. COPETE-HT 5P BCO SPLASH |
| 33 | WW01L00921 | ACTUADOR |
| 33 | WW01F00346 | ACTUADOR |
| 43 | WW01F00150 | TARJETA CONTROL PERILLAS |
| 44 | WW01F00058 | BOTON SELECTOR |
| 44 | WW01F01503 | BOTON SELECTOR |
| 47 | WW01F00162 | ARNES CUBIERTA |
| 48 | WW01F00165 | ARNES PRESOSTATO |
| 49 | WW01F00184 | ARNES SELECTOR |
| 54 | WS01A01627 | SELECTOR |
| 55 | WW01F00926 | SELECTOR |
| 55 | WW01F00339 | SELECTOR |
| 99 | WW01L00405 | REFUERZO GABINETE |
| 101 | WW01L00989 | ENS. GABINETE 10KG CURVO |
| 101 | WW01L00498 | ENS. GABINETE 10KG CURVO |
| 104 | WW01L01040 | PATA |
| 104 | WW01L00468 | PATA |
| 105 | WW01A00361 | LIGA |
| 110 | WW01A00041 | ABRAZADERA |
| 110 | WW01F00342 | ABRAZADERA |
| 111 | WW01F00238 | CAPACITOR |
| 111 | WW01F00342 | CAPACITOR |
| 113 | WW01L00469 | ENS. BLOCAPUERTAS |
| 113 | WW01F01553 | ENS. BLOCAPUERTAS |
| 118 | WW01L00335 | TAPON BISAGRA |



LAVADORA LAE12050PB0

| Guía | Refacción | Descripción |
|------|--------------|----------------------------|
| 119 | WW01L00001 | BISAGRA |
| 123 | WW01L00079 | TAPA MANGUERA |
| 207 | WW01L00915 | TINA 11 Y 13 KGS.AMAZONAS |
| 207 | WW01L01119 | TINA 11 Y 13 KGS.AMAZONAS |
| 211 | WW01L00470 | MANGUERA |
| 229 | WW01F00836 | COPE AGITADOR |
| 229 | WW01F00360 | COPE AGITADOR |
| 230 | WW01L00945 | ENS. AGITADOR |
| 231 | WW01L00431 | TAPA FSD |
| 232 | WW01L00440 | CUBIERTA ECO BCA 11 KG FAB |
| 235 | WW01L00979 | ENS. TAPA |
| 237 | WW01L00002 | BISAGRA |
| 246 | WW01F00945 | ENS. VARILLA |
| 247 | WW01F00946 | ENS. VARILLA |
| 247 | WW01L00499 | ENS. VARILLA |
| 248 | WW01F00947 | ENS. VARILLA |
| 249 | WW01F00948 | ENS. VARILLA |
| 249 | WW01L00499 | ENS. VARILLA |
| 250 | WW01F00323 | ROTULA SUPERIOR |
| 251 | WS01L09224 | SELLO TINA |
| 252 | WW01A00080 | ARANDELA |
| 254 | WW01L00430 | ENS. ANILLO BALANCEO |
| 254 | WW01L01503 | ENS. ANILLO BALANCEO |
| 255 | WW01L00023 | CANASTA SUPER GDE |
| 256 | WW01L01015 | FONDO CANASTA |
| 256 | WW01A00572 | FONDO CANASTA |
| 257 | WW01A00099 | TORNILLO FONDO CANASTA |
| 258 | WW01A00048 | TUERCA AMAZ IZO. |
| 259 | WW01F00066 | CUBIERTA TINA |
| 259 | WW01F00066 | CUBIERTA TINA |
| 260 | WW01L00467 | SELLO CUBIERTA TINA |
| 261 | WW01L00295 | SELLO BOMBA |
| 262 | 189D1626P002 | COPA DESP. SUAVIZANTE |
| 262 | WW01L00432 | COPA DESP. SUAVIZANTE |
| 262 | WW01L00432 | COPA SUAVIZANTE AZUL |
| 263 | WW01A00064 | TORNILLO C/GROMET COPL |
| 263 | WW01A00064 | TORNILLO C/GROMET COPL |



LAVADORA LAE12050PB0

| Guía | Refacción | Descripción |
|------|--------------|--------------------------------|
| 269 | WW01L00433 | DOSIFICADOR DE SUAVIZANTE MAQU |
| 601 | WW01F00106 | MOTOR |
| 601 | WW01F00331 | MOTOR |
| 601 | WW01F01173 | ENS. MOTOR |
| 613 | WW01F00043 | POLEA TRANSMISION |
| 615 | WR01F02389 | BANDA 3L V AMAZONAS |
| 615 | WW01F00345 | BANDA 3L V AMAZONAS |
| 615 | WW01F00345 | BANDA UNIFICADA |
| 616 | WW01A00071 | ARANDELA DE FRICCION |
| 617 | WW01A00069 | ANILLO DE RETENCION |
| 630 | WW01F00134 | SOPORTE LOW CO |
| 781 | WW01F00272 | OPRESOR POLEA |
| 801 | WW01L00355 | REFUERZO MOTOR |
| 876 | WW01F00116 | BOMBA |
| 886 | 189D2645G005 | ENS. POLEA MOTOR 11KG LOW COST |
| 899 | WW01A00050 | BUJE |
| 900 | WW01L00287 | TAPON CAJA PRESOSTATO |
| 901 | WW01F00256 | ESPACIADOR MOTOR |
| 901 | WW01F00256 | ESPACIADOR MOTOR |
| 903 | WW01L00291 | JALADERA |
| 907 | WW01F00277 | O-RING |
| 908 | WW01A00079 | CLIP TAPON PRESOSTATO |
| 909 | WW01A00104 | ABRAZADERA BOMBA |
| 918 | WW01L00157 | ENS. FLOTADOR |
| 919 | WW01A00353 | EMBRAGUE FIJO |