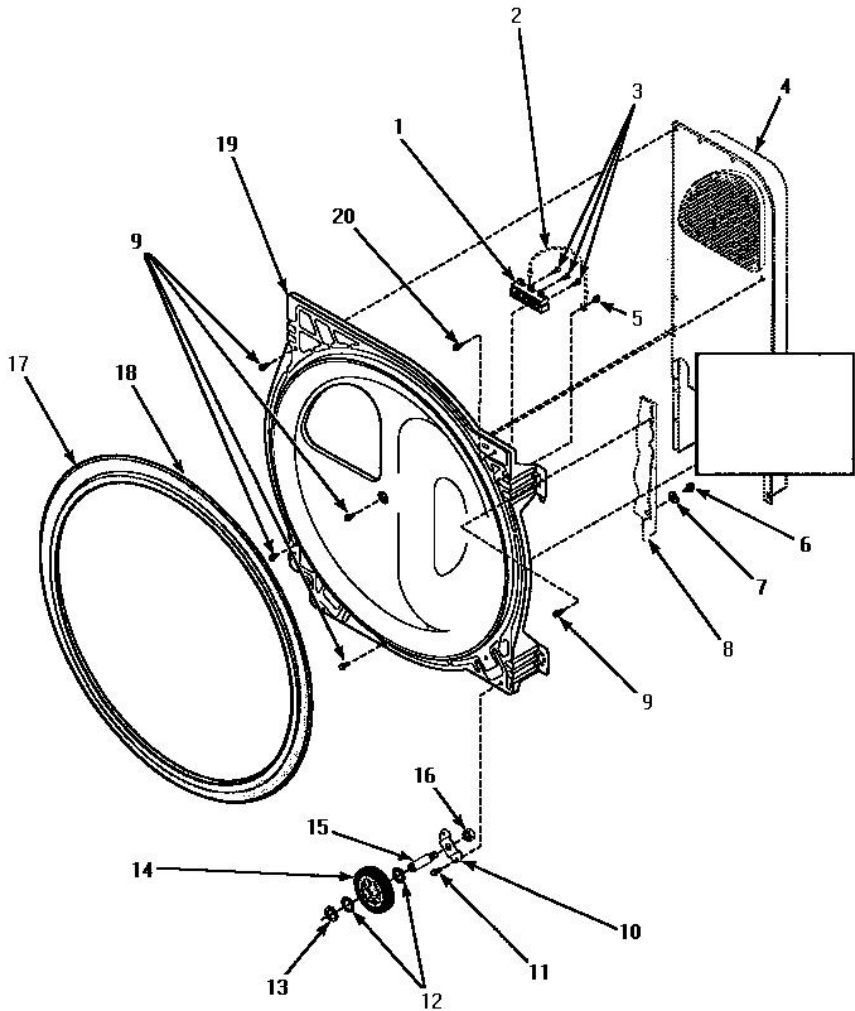


Secadora Amana LG4309W



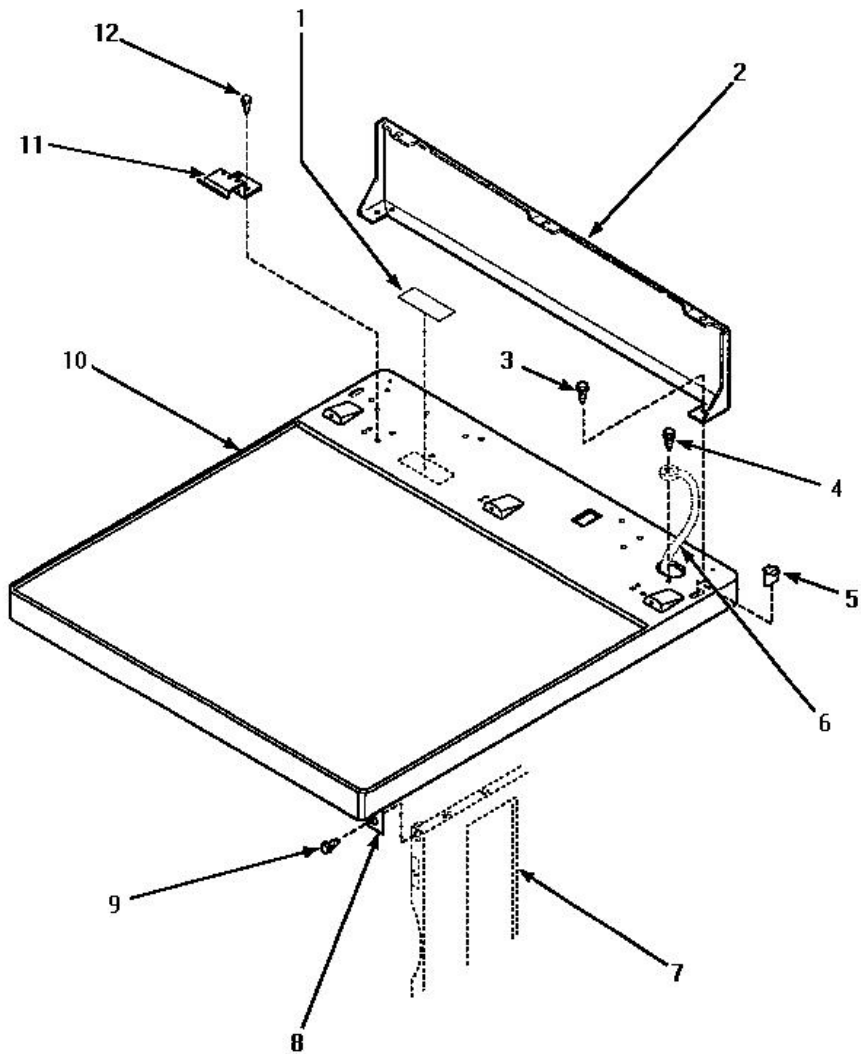
REAR BULKHEAD, FELT SEAL, CYLINDER ROLLER AND TERMINAL BLOCK



Secadora Amana LG4309W

Guía	N.P.	Descripción
1	61923P	TERMINAL BLOCK
3	Y61199	SCREW, No.10-32 X 3/8
6	20530	SCREW, 10-24X3/8 HEX
7	51474	WASHER,13/64IDX1/2ODX.
8	Y00000000	SEE NOTE HEATER BOX ASSEMBLY
9	501668	SCREW, 10B-16 X .34
10	500062	BRACKET, CYLINDER ROLLER
12	52549	WASHER, 501 ID X3/4 ODX
13	23748	RING, RETAINING
14	500214	ASSEMBLY, CYLINDER ROLLER
15	56461	SHAFT
16	56156	NUT, 3/8-16 SERRATED
17	501801	SEAL, CYLINDER
18	22506P	ADHESIVE,3M-1300-5 OZ.
19	500356W	BULKHEAD, REAR
20	501285	SCREW, No.12 X 9/16

Secadora Amana LG4309W



CABINET TOP AND CONTROL HOOD REAR PANEL



Secadora Amana LG4309W

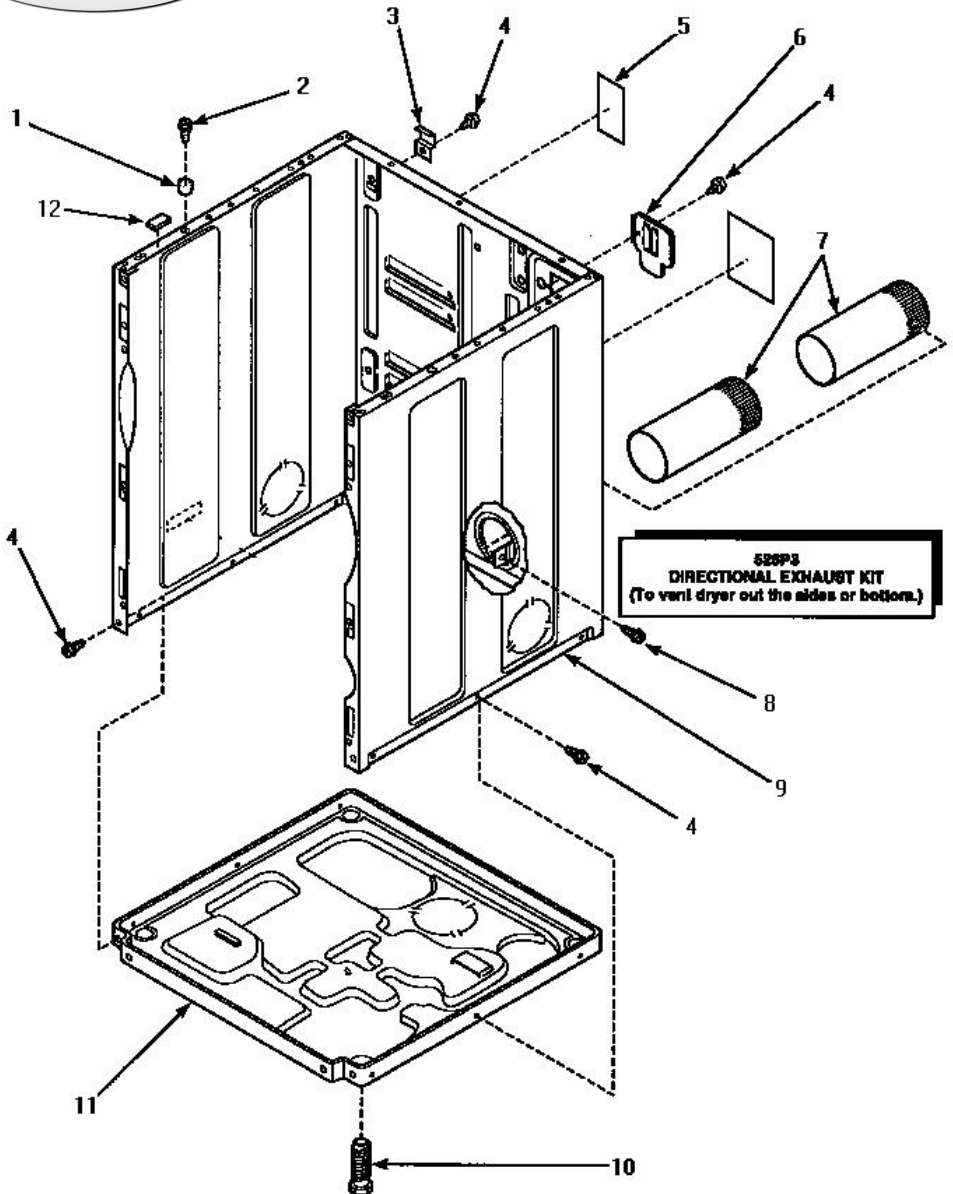
Guía	N.P.	Descripción
1	24903	STICKER,DISCONNECT POW
2	500343	PANEL,BACK(HOME HOOD)
3	501086	SCREW, 8B-18X3/8 SLT
4	20530	SCREW, 10-24X3/8 HEX
5	501242	CLIP,TUBULAR INSERT
7	Y00000000	SEE NOTE CABINET
8	500084	BRACKET, L-TOP
9	33562	SCREW
10	500085LP	PANEL, TOP-HOME
10	500085WP	CABINET TOP, WHITE
11	501241	CLIP, HOLD DOWN

Distribuidor Autorizado

SurteRápido.com

Venta de Refacciones
Electrodomesticas

Secadora Amana LG4309W



CABINET, EXHAUST DUCT AND BASE



Secadora Amana LG4309W

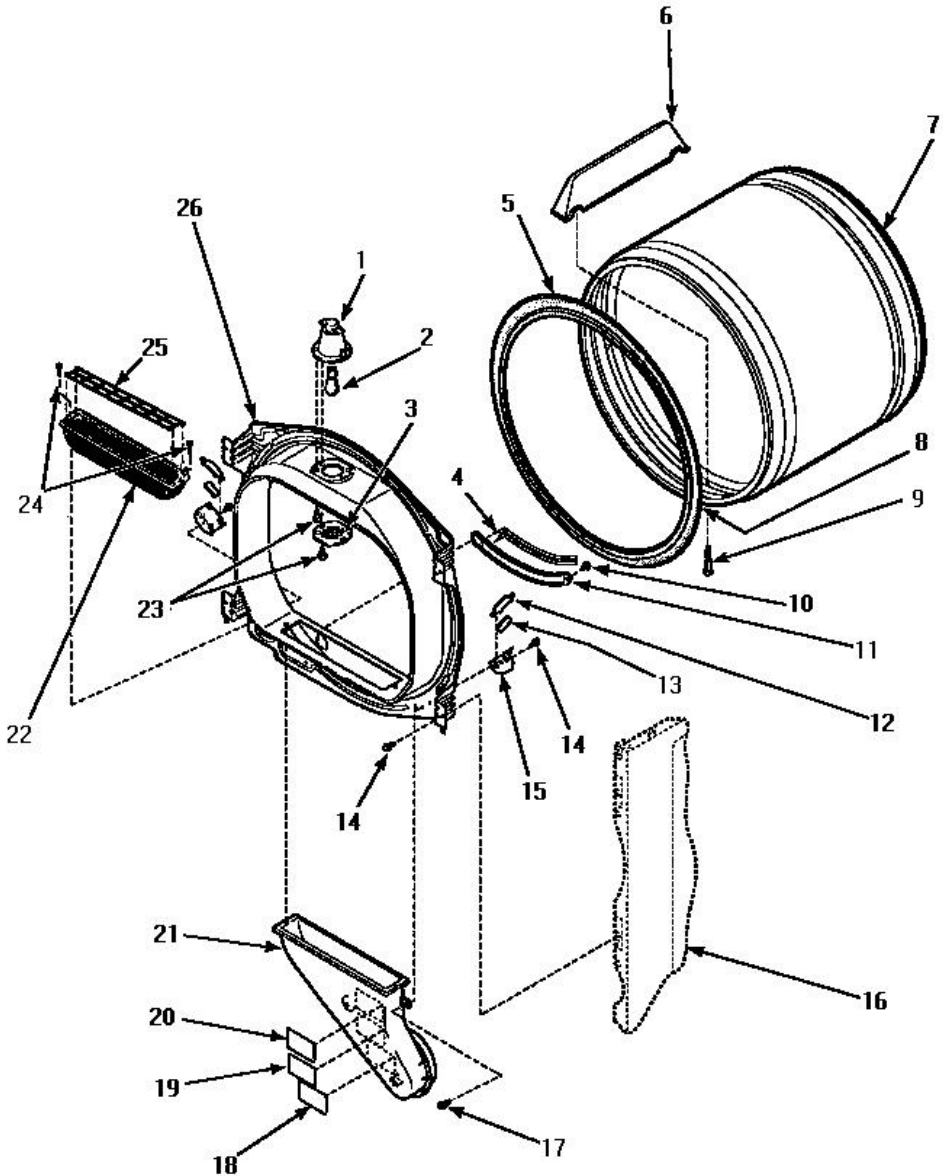
Guía	N.P.	Descripción
NI	528P3	SIDE VENT KIT
1	56079	LOCATER, PANEL
2	32671	SCREW, TAPPING
3	500003	HINGE, TOP
4	33562	SCREW
5	500670	STICKER NG OR MIXED GA
6	500114	PANEL, ACCESS COVER
7	500064	EXHAUST DUCT
8	501668	SCREW, 10B-16 X .34
9	500001HP	ASSY, CABINET
9	500001LP	ASSY, CAB (HOME)
9	500001WP	CABINET, DRYER & WASHER (WHT)
10	Y500101	LEG, LEVELING (PLASTIC)
11	500070	BASE, DRYER
12	Y56128	PAD, BUMPER

Distribuidor Autorizado

SurteRápido.com

Venta de Refacciones
Electrodomesticas

Secadora Amana LG4309W



FRONT BULKHEAD, AIR DUCT, FELT SEAL AND CYLINDER



Secadora Amana LG4309W

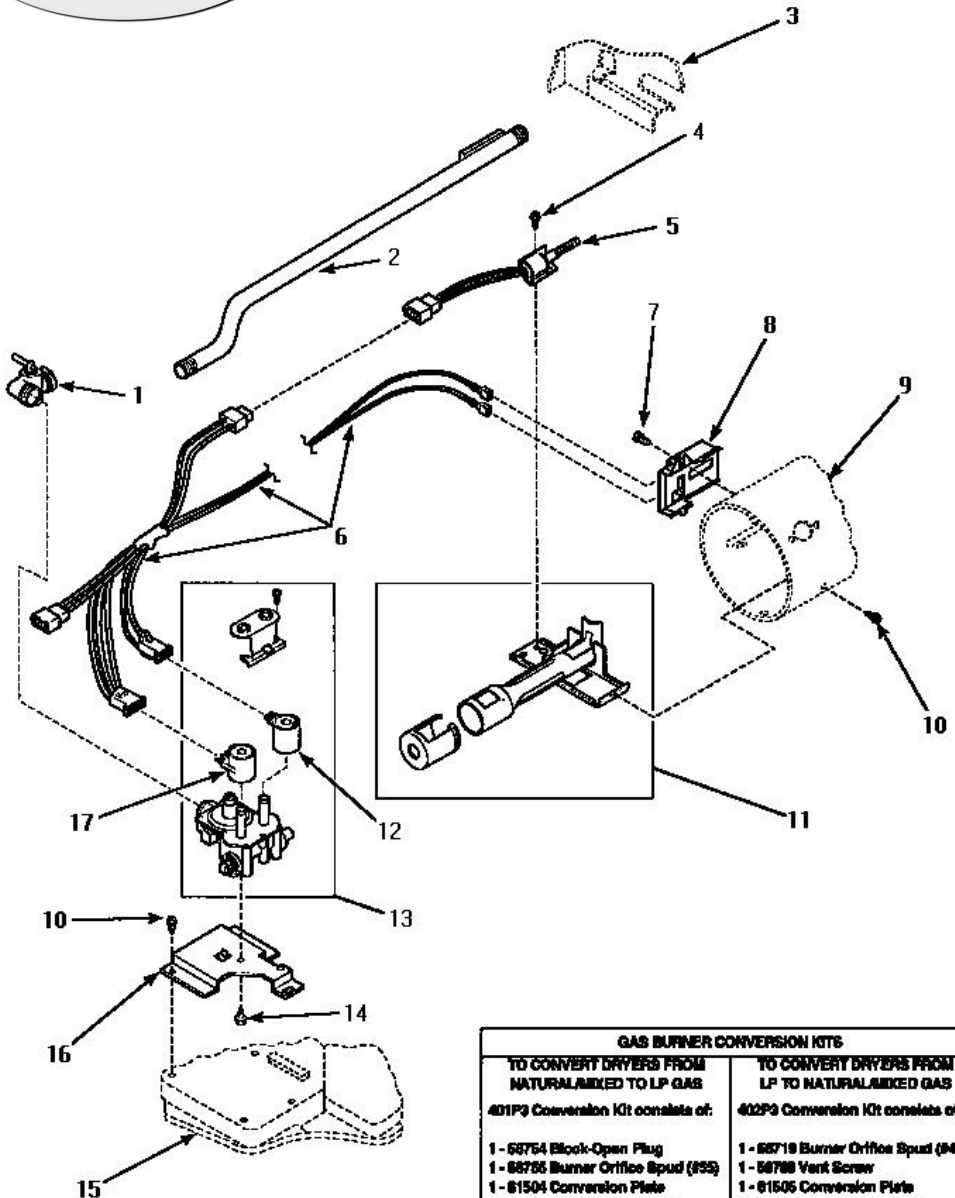
Guía	N.P.	Descripción
5	501801	SEAL, CYLINDER
6	500022	BAFFLE,CYLINDER-WHT-SHORT
7	500013WP	ASSY,CYLINDER-HOME-
8	22506P	ADHESIVE,3M-1300-5 OZ.
9	Y62588	SCREW, 10BT-12 X 1 TAP
11	501246	MOUNTING,MOISTURE SENSOR
12	Y501676	GLIDE, CYCLINDER GREEN
13	500121	PAD, FELT-COIN
14	501668	SCREW, 10B-16 X .34
15	501554	BRACKET, CYLINDER GLIDE
16	Y00000000	SEE NOTE CABINET
17	Y31645	SCREW-10 16 X.44
18	56259	STICKER
19	500049	STICKER
20	500314	LABEL, WARNING
21	500241	DUCT, HEAT
22	502093	FILTER, LINT KIT
22	502140P	FILTER, LINT KIT
23	500248	SCREW
24	500226	SCREW, 8B-16X5/8 TAP
25	502092	COVER, LINT FILTER
26	500016W	ASSY, BULKHEAD FRONT COMPLETE

Distribuidor Autorizado

SurteRápido.com

Venta de Refacciones Electrodomesticas

Secadora Amana LG4309W



GAS BURNER CONVERSION KITS

TO CONVERT DRYERS FROM
NATURAL/MIXED TO LP GAS

401P3 Conversion Kit consists of:

- 1 - 66754 Block-Open Plug
- 1 - 66756 Burner Orifice Spud (#35)
- 1 - 61504 Conversion Plate
- 1 - 60517 Valve Converted to LP Gas Sticker
- 2 - 60520 LP Gas Stickers

TO CONVERT DRYERS FROM
LP TO NATURAL/MIXED GAS

602P3 Conversion Kit consists of:

- 1 - 66719 Burner Orifice Spud (#40)
- 1 - 66788 Vent Screw
- 1 - 61505 Conversion Plate
- 1 - 60516 Valve Converted to Natural Gas Sticker
- 2 - 60521 Natural Gas Stickers

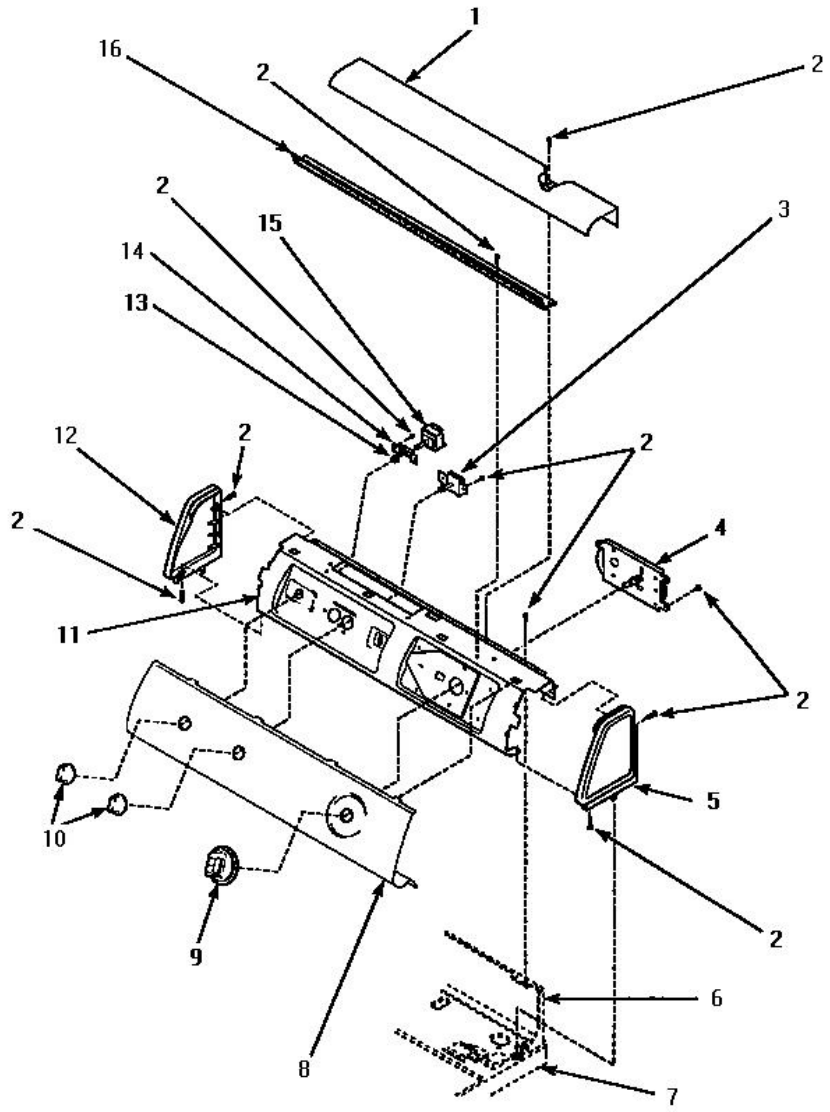
GAS VALVE, IGNITER AND GAS CONVERSION KITS
(Gas Model Dryers)



Secadora Amana LG4309W

Guía	N.P.	Descripción
NI	401P3	KIT, CONVERSION-LP
NI	402P3	KIT,CONVERSION-NG
NI	58719	ORIFICE,SCREW
NI	58754	PLUG,BLOCK OPEN
NI	58755	ORIFICE,LP
NI	58768	SCREW,VENT
NI	60516	STICKER,VALVE CONVERTED
NI	60517	VALVE CONVERTED TO LP GAS STIC
NI	60520	STICKER,LP GAS
NI	60521	STICKER,NG OR MIXED GAS
NI	61504	CONVERSION PLATE
NI	61505	CONVERSION PLATE
1	Y56229	VALVE,ELBOW SHUT-OFF
2	500647	PIPE, LEAD-IN
4	51782	SCREW, 6B-20X5/16
5	60868	IGNITER & BRACKET ASSEMBLY
6	60641	ASSY,WIRE HARNESS-GAS
7	23222	SCREW, 8B-18 X 1/4 HE
8	Y56231	SENSOR, FLAME
9	Y00000000	SEE NOTE CABINET
10	501668	SCREW, 10B-16 X .34
11	Y56234	ASSEMBLY, BURNER
12	279834	COIL, SECONDARY
13	58804	ASSY,VALVE-GAS-SINGLE-
14	56124	SCREW, 8T-32X3/8 HE
16	500821	BRACKET, MOUNTING
17	279834	BOOSTER & HOLDING COIL

Secadora Amana LG4309W



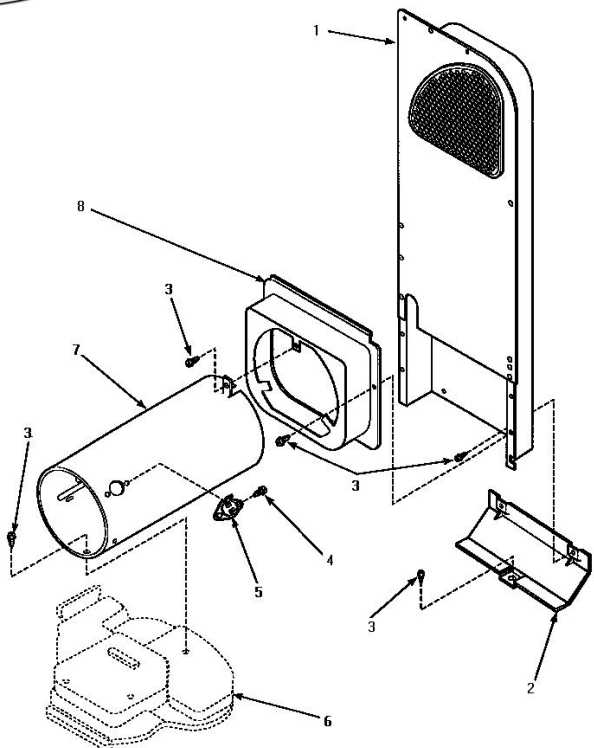
GRAPHIC PANEL, CONTROL HOOD AND CONTROLS



Secadora Amana LG4309W

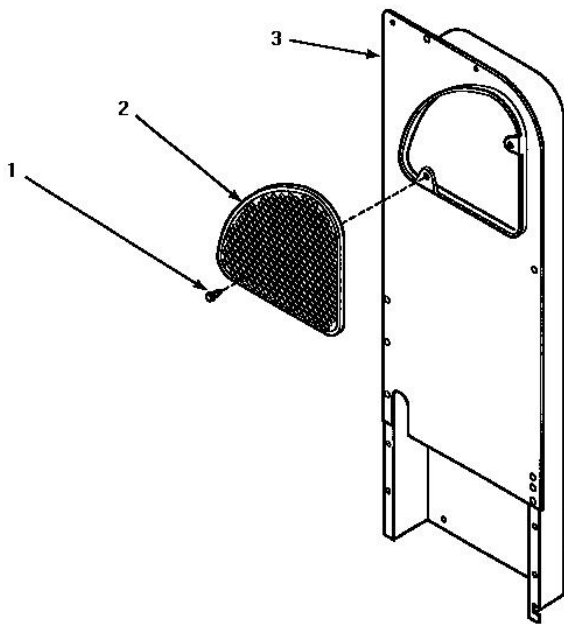
Guía	N.P.	Descripción
1	500302	COVER, TOP
2	501086	SCREW, 8B-18X3/8 SLT
4	59419	TIMER
5	34815	PANEL, END R.H. (BLK)
7	Y00000000	SEE NOTE CONTROL HOOD REAR PANEL
8	500784	PANEL, GRAPHIC
9	500311	ASSY, TIMER KNOB BLACK
10	34847	ASSY, KNOB-ROTARY
12	34816	PANEL, END (BLK, L.H.)
13	57584	NUT
14	59704	BRACKET, SWITCH MOUNT
15	Y61511	SWITCH, FABRIC SELECTOR
16	500300	BRACKET, CONTROL SUPPORT-MECH

Secadora Amana LG4309W



**HEATER BOX ASSEMBLY ORIGINALLY ON DRYER
 (Gas Model Dryers)**

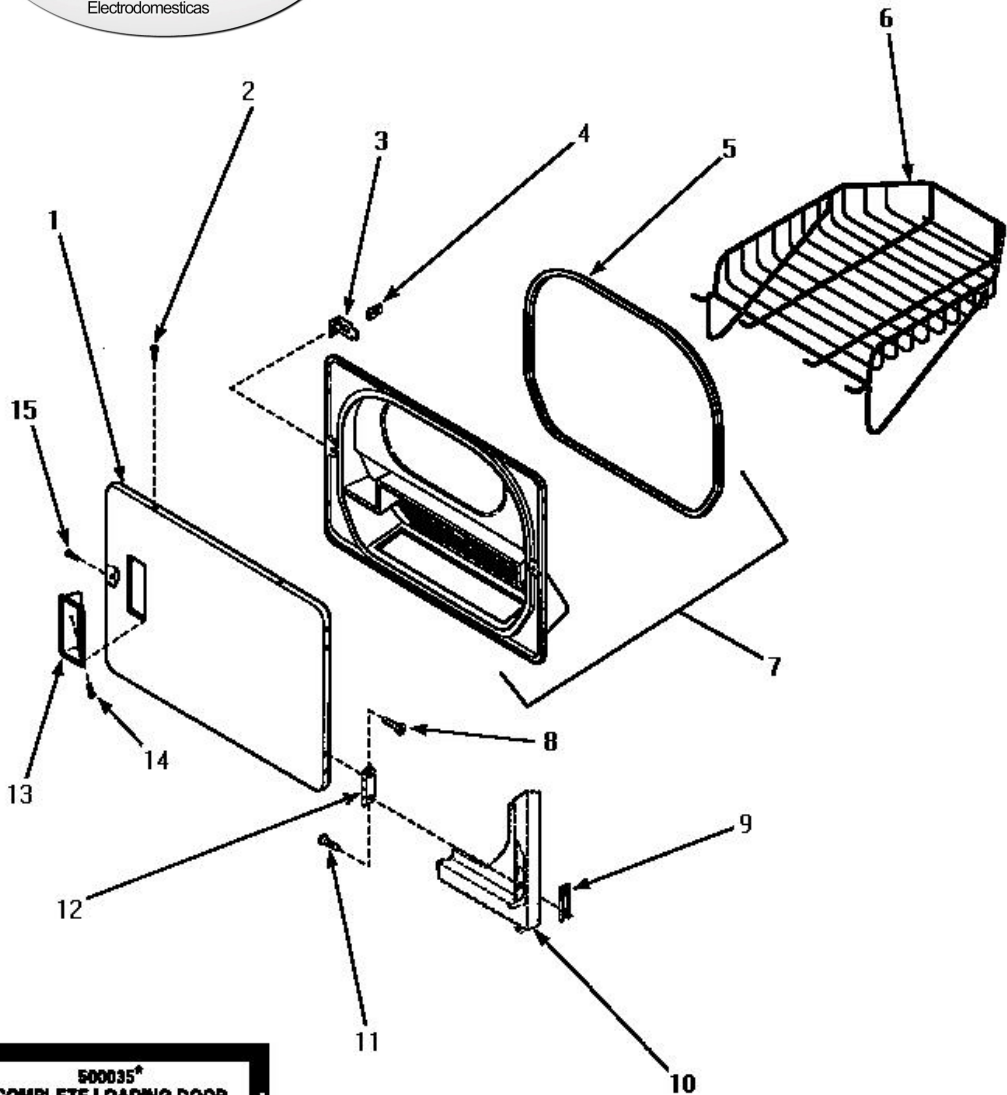
Guía	N.P.	Descripción
2	60952	SHIELD,HEAT DUCT
3	501668	SCREW, 10B-16 X .34
4	51782	SCREW, 6B-20X5/16
5	61886	THERMOSTAT, LIMIT
6	Y00000000	SEE NOTE BASE
7	61974	BURNER HOUSING
8	500122	SHROUD, HEAT DUCT



**HEATER BOX ASSEMBLY REPLACEMENT
 (Gas Model Dryers)**

Guía	N.P.	Descripción
1	501668	SCREW, 10B-16 X .34
2	500820	COVER,OUTLET-HEAT DUCT
3	500179P	HEATER BOX ASSEMBLY

Secadora Amana LG4309W



500035*
COMPLETE LOADING DOOR
ASSEMBLY
 (Does not include 500236
 Door Hinge Mounting Clip
 and four 500226 Screws.)

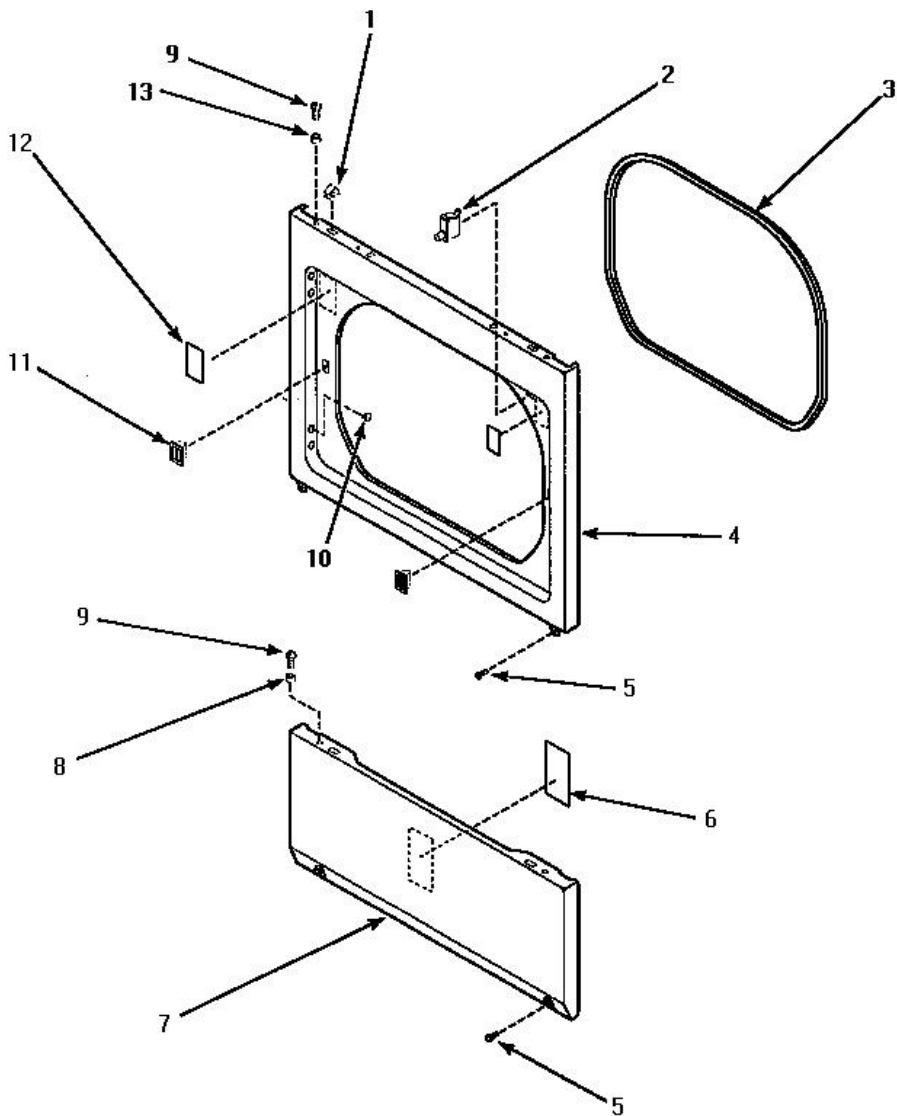
LOADING DOOR WITH DRYING RACK



Secadora Amana LG4309W

Guía	N.P.	Descripción
NI	500035L	ASSY,DOOR-HOME
NI	500035W	ASSY,DOOR-HOME
1	500040L	ASSY, DOOR-HOME
1	500040W	ASSY,DOOR-HOME
3	500223	BRACKE, DOOR STRIKE
4	500039	STRIKE, DOOR (METAL)
5	500200	SEAL,DOOR
6	501295P	RACK, DRYING
7	500199	ASSY,LINER & SEAL
8	500226	SCREW, 8B-16X5/8 TAP
9	500236	CLIP,DOOR HINGE MOUNT
10	Y00000000	SEE NOTE FRONT PANEL
12	500041	HINGE,DOOR
13	500042L	PULL,DOOR
13	500042W	PULL,DOOR
14	500297	SCREW,8AB-18X1/4 TAP

Secadora Amana LG4309W



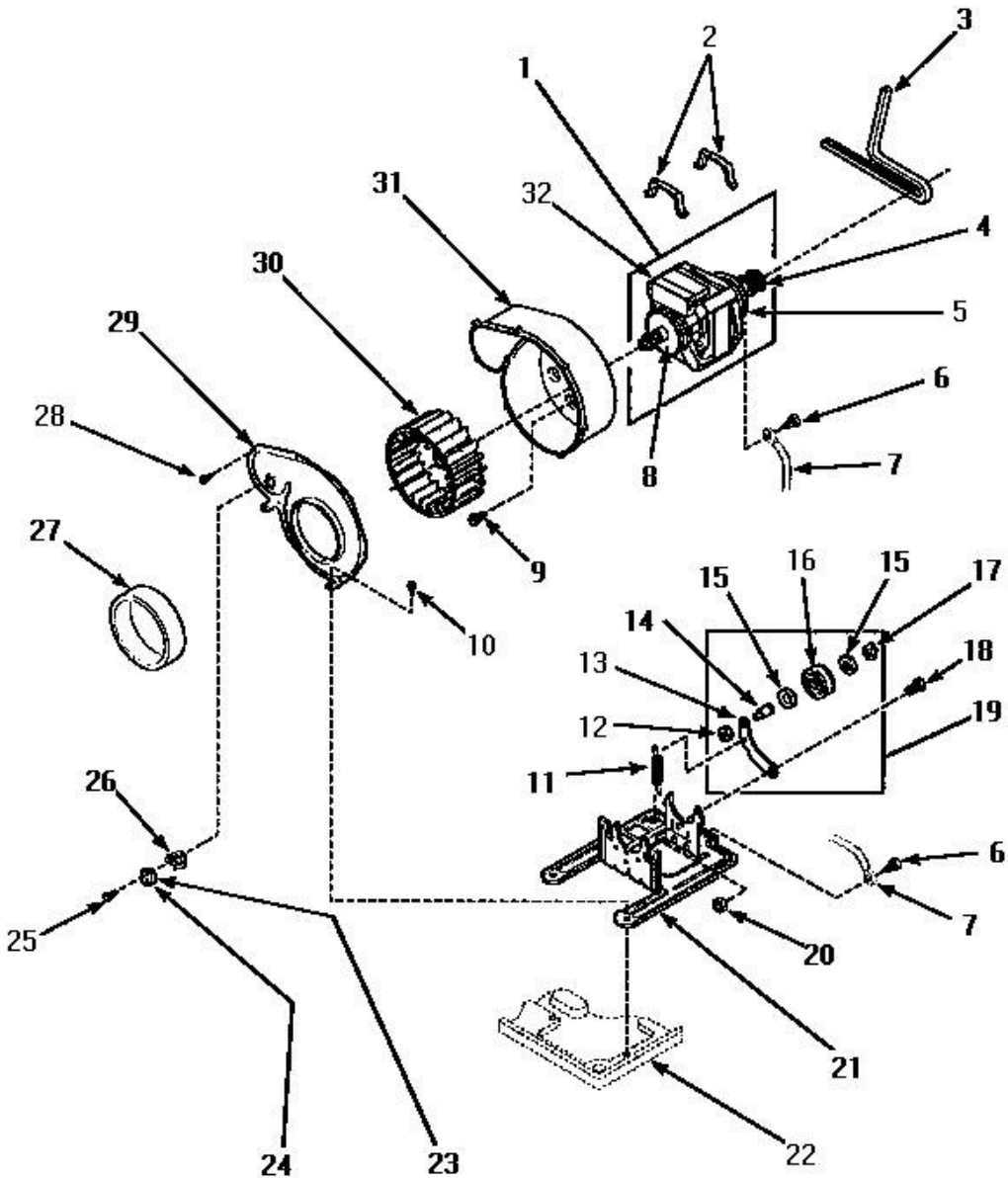
LOWER ACCESS PANEL, FRONT PANEL AND SEAL



Secadora Amana LG4309W

Guía	N.P.	Descripción
1	28835	HOLD-DOWN CLIP
2	Y62872	DOOR SWITCH
3	500034	SEAL,FRONT PANEL
4	500033H	PANEL,FRONT
4	500033L	PANEL, FRONT (ALMOND)
4	500033W	PANEL, FRONT
5	33562	SCREW
6	500670	STICKER NG OR MIXED GA
7	500044H	PANEL,ACCESS
7	500044L	PANEL, ACCESS (ALMOND)
7	500044W	PANEL, ACCESS (COMML)
8	56079	LOCATER, PANEL
9	32671	SCREW, TAPPING
10	500227	SCREW, No.8AB-16X7/16PH
11	54660	CATCH, DOOR
12	500281	STICKER

Secadora Amana LG4309W





Secadora Amana LG4309W

Guía	N.P.	Descripción
1	501211	ASSEMBLY, MOTOR & PULLEY
2	Y58047	CLAMP, MOTOR MOUNT
3	59174	BELT, CYLINDER
4	500011	PULLEY,MOTOR
6	20530	SCREW, 10-24X3/8 HEX
7	Y00000000	SEE NOTE BASE
8	58044A	MOUNT,MOTOR-LOCKING
9	Y31645	SCREW-10 16 X.44
11	56076	SPRING, IDLER
12	56156	NUT, 3/8-16 SERRATED
13	500910	LEVER, IDLER
14	56461	SHAFT
15	52549	WASHER, 501 ID X3/4 ODX
16	Y54414	ASSEMBLY, WHEEL & BEARING
17	23748	RING, RETAINING
18	500824	SCREW, 1/4-20 UNC HEX
19	500269	ASSY, IDLER LEVER
20	52566	NUT, HEX JAM 1/4-20L
21	500822	MOUNT, MOTOR
24	Y61372	THERMOSTAT
25	501086	SCREW, 8B-18X3/8 SLT
26	61401	THERMOSTAT HEATER
27	500313	SEAL,BLOWER HSG
29	500078	COVER, BLOWER HOUSING
30	56000	ASSEMBLY, BLOWER FAN
31	56020	HOUSING, BLOWER
32	501218	KIT, SWITCH MOTOR