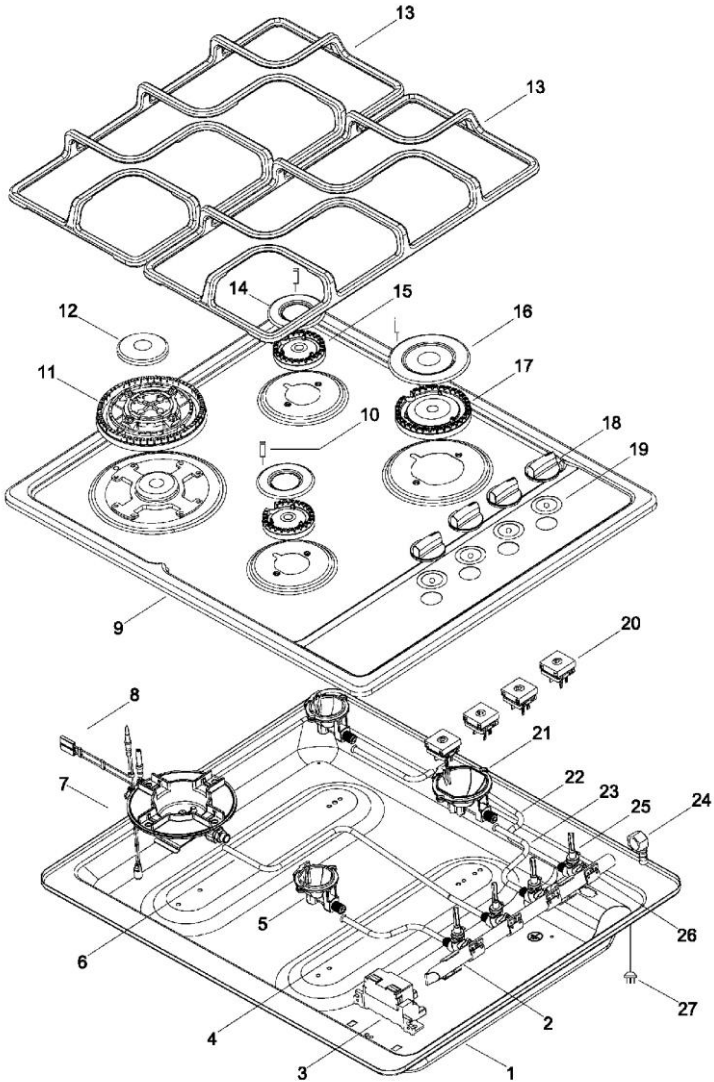


PARRILLA

PM6005



PM60051

| | | |
|----|----------------|----------------------------|
| 1 | 222D3621P002 | CAJA QUEMADORES 50CM 1 |
| 2 | 222D3620G002BL | ENSAMBLE TUBO VALVULAS 1 |
| 3 | 317B8046P002 | MODULO ENCENDIDO 4 SAL |
| 4 | ME2B9301P001 | TUERCA 41365 LATON. 4 |
| 5 | 222D3654P001 | BASE SEMIRAPIDA E.E. 2 |
| 6 | ME2B9430G012 | ENSAMBLE ORIFICE HOLDER 1 |
| 7 | 183D8397P006 | BASE QUEMADOR T-RING L |
| 8 | 223C4032P002 | BUJIA IGNICION |
| 9 | 222D3587P012DC | CUBIERTA INOXIDABLE DEC.50 |
| 10 | 223C5559P001 | BUJIA 450 MM 2 |
| 11 | 183D8398P002 | QUEMADOR TRIPLE RING |
| 12 | 223C4031P002MA | TAPA QUEM EXTERNA TR M |
| 13 | 222D3774P001 | PARRILLA DE FUNDICION |
| 14 | 223C5508P003 | TAPA QUEMADOR SR MATE |
| 15 | 222D3652P001 | QUEMADOR RECTO SEMIRAP |
| 16 | 317B6894P002 | TAPA CHICA QUEMADOR MA. |
| 17 | 222D3653P001 | QUEMADOR RECTO RAPIDO |
| 18 | 223C5562P001 | PERILLAS TIPO NARDI |
| 19 | 317B8178P001 | PROTECTOR SWITCH VALVULA |
| 20 | 222D3701G001 | CATENARIA EE 4 POSICIO |
| 21 | 222D3655P001 | BASE RAPIDA E.E. 1 |
| 22 | ME2B9430G007 | ENSAMBLE ORIFICE HOLDER 1 |
| 23 | ME2B9430G008 | ENSAMBLE ORIFICE HOLDER 1 |
| 24 | 317B8204P001 | CODO CONECTOR 43315 N |
| 25 | 223C5560P001 | VALVULA STANDAR |
| 26 | 317B8229P001 | ABRAZADERA VALVULA |
| 27 | 317B8108P001C | VINCHA CABLE 1 |

***NOTA: SI EL CODIGO DEL ARTICULO QUE NECESITA NO APARECE EN NUESTRA PAGINA WEB, ES PROBABLE QUE SEA SOBRE PEDIDO O ESTE OBSOLETO.**

FAVOR DE COMUNICARSE A NUESTRAS OFICINAS PARA MAYOR INFORMACION

TELEFONOS: 83377949, 83377999 Y 83373889.