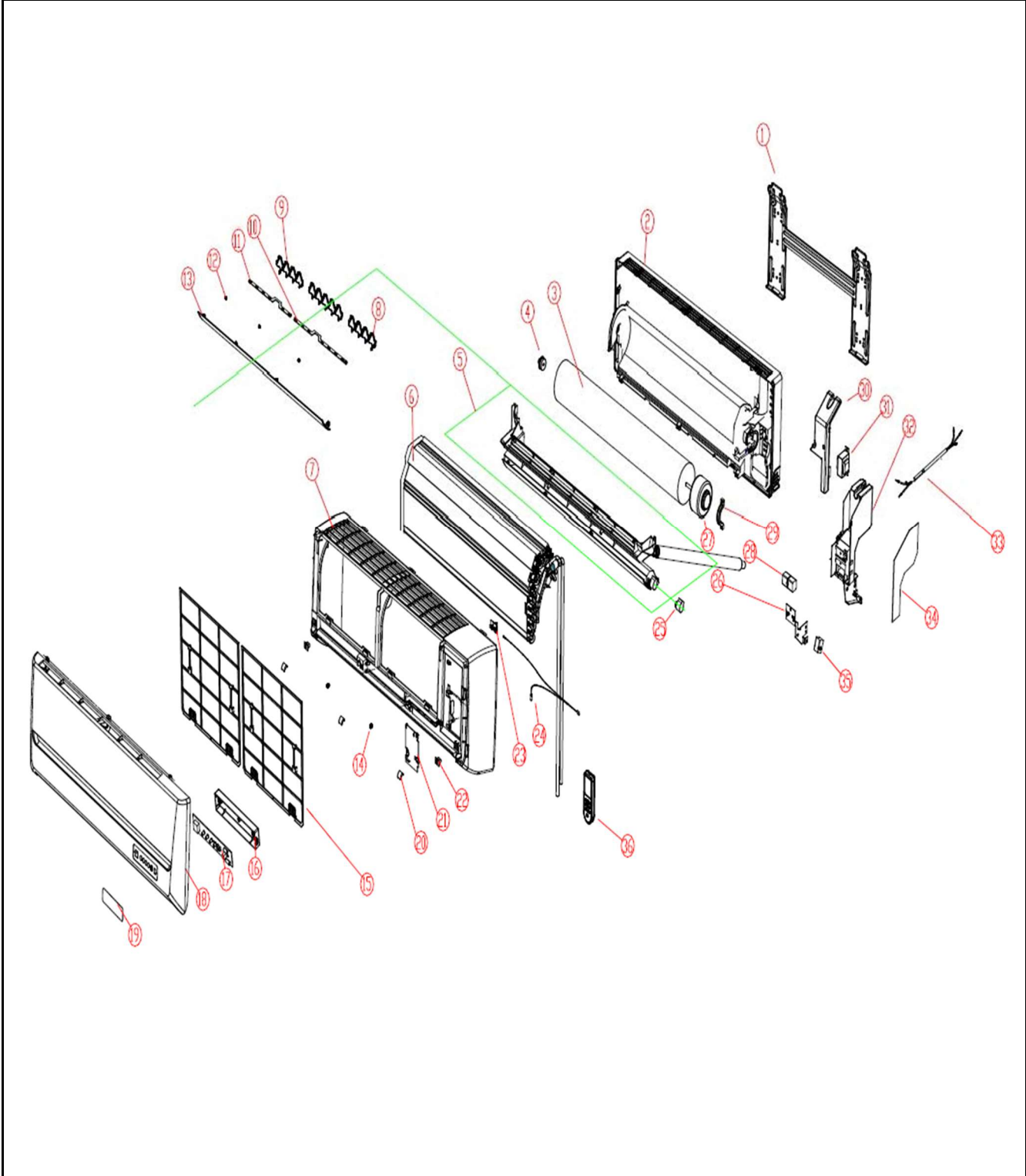


# MINISPLIT WA6151Q

Marca  
Capacidad/BTU

Whirlpool  
18000BTU / 220V

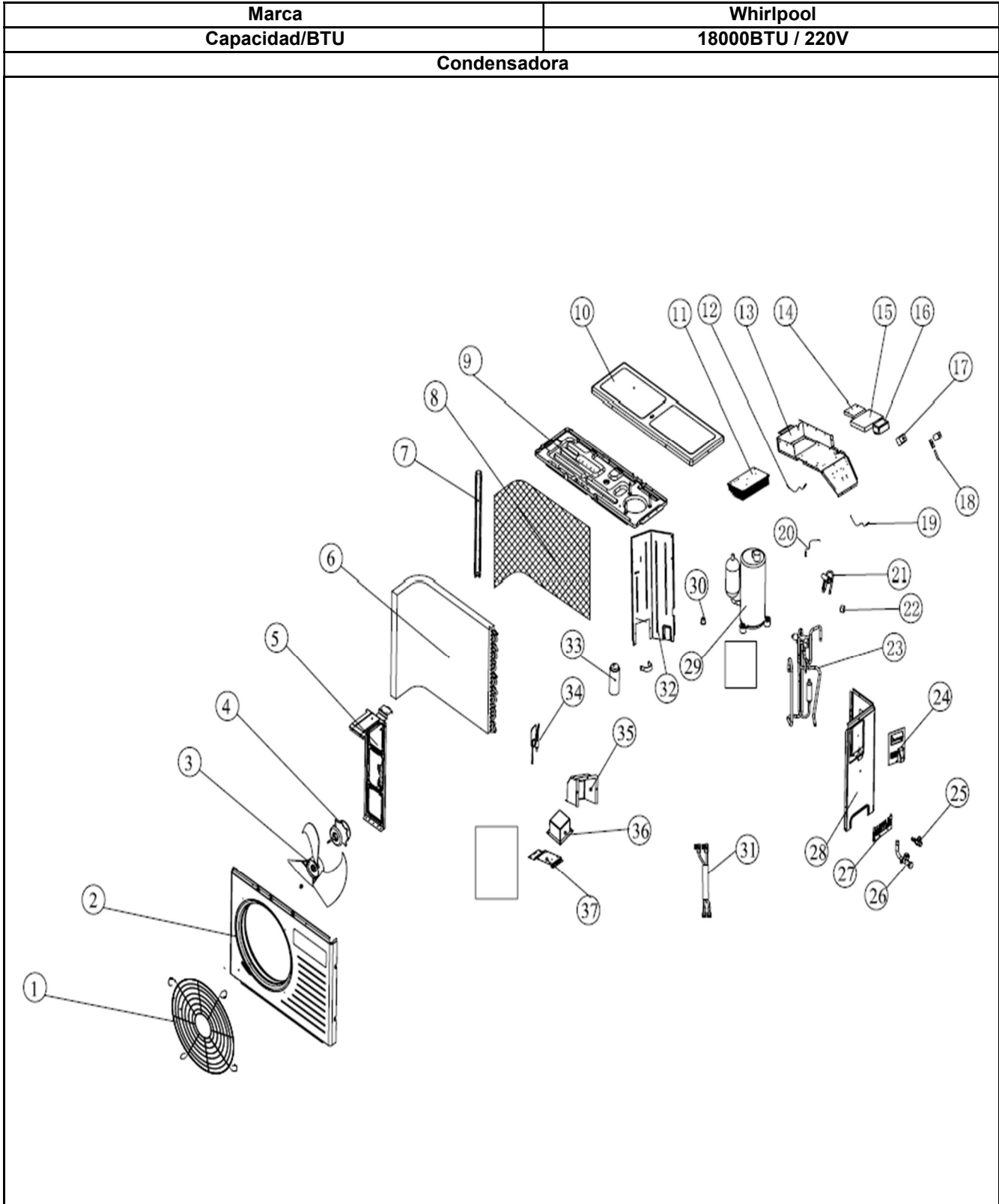
## Evaporadora



# MINISPLIT WA6151Q

Marca		Whirlpool	
Capacidad/BTU		18000BTU / 220V	
Evaporadora			
Ref	Descripción	Cant	Numero de Parte
1	Installation plate assy	1	1248081
2	Base parts	*	*****
3	Cross-flow fan	1	1247788
4	Axletree	1	1223738
5	Air outlet parts	1	7502857
6	Refrigerant system	1	1313050
7	Shell	*	*****
8	Vertical Level Vane	2	1248649
9	Vertical Level Vane	11	1248650
10	Center staff	1	1248841
11	Center staff	1	1248843
12	Bearing	3	1222824
13	Level vane	1	1356400
14	Baffle	*	*****
15	Filter	2	1372780
16	Display box	*	*****
17	Display board	1	1427666
18	Panel	1	1364809
19	Decorate panel	1	1408222
20	NA	*	*****
21	Wiring distribution cover assy	*	*****
22	NA	*	*****
23	Sensor bracket	*	*****
24_1	Temperature Sensor	1	1387643
24_2	Temperature Sensor	1	1383891
25	Step motor	2	1225096
26	Mounting plate	*	*****
27	Fan motor	1	1368278
28	Terminal panel	*	*****
29	Holder	1	1223749
30	Elec joint box cover	*	*****
31	Transformer	1	1222254
32	Elec joint box	*	*****
33	Power wire	1	1337993
34	Control board	1	1365645
35	Terminal panel	*	*****
36	Remote controller	1	1338841

# MINISPLIT WA6151Q



# MINISPLIT WA6151Q

Marca		Whirlpool	
Capacidad/BTU		18000BTU / 220V	
Condensadora			
Ref	Descripción	Cant	Numero de Parte
1	Fan guard	*	*****
2	Panel parts	*	*****
3	Propeller fan	1	1313822
4	Fan motor	1	1311408
5	Motor bracket	*	*****
6	Condenser ASS'Y	1	1324939
7	Mounting plate	*	*****
8	Back guard	*	*****
9	Base parts	*	*****
10	Upper board parts	*	*****
11	Radiator	1	1353897
12	NTC sensor	1	1326145
13	Elec joint box assy	*	*****
14	Driver board	1	1335693
15	Power board	1	1354095
16	Filter	1	1317464
17	Terminal panel	*	*****
18	Fuse	1	1205708
19	Temperature sensor	1	1201221
20	Temperature sensor	1	1201219
21	4-way valve	1	1258657
22	Electromagnetic coil	1	1202908
23	4-way valve ASS'Y	1	1354622
24	Wiring distribution cover assy	*	*****
25	Three way valve	1	1258472
26	Two way valve	1	1258473
27	Mounting plate	*	*****
28	Side panel parts	*	*****
29	Compressor	1	1341332
30	Overload protector	1	1300432
31	Connecting wire	1	1201101
32	Separate plate	*	*****
33	Al electroanalysis capacitor	1	1379894
34	Capillary ASS'Y	1	1354605
35	Cover	*	*****
36	PFC reactor	1	1205797
37	Mounting plate	*	*****