

Whirlpool

SERVICE

CENTRO DE SOLUCIONES



LO ORIGINAL MARCA DIFERENCIA

EXPLOSIONADO DE PARTES

- MINI SPLIT -

MODELO | WA6267D01

acros

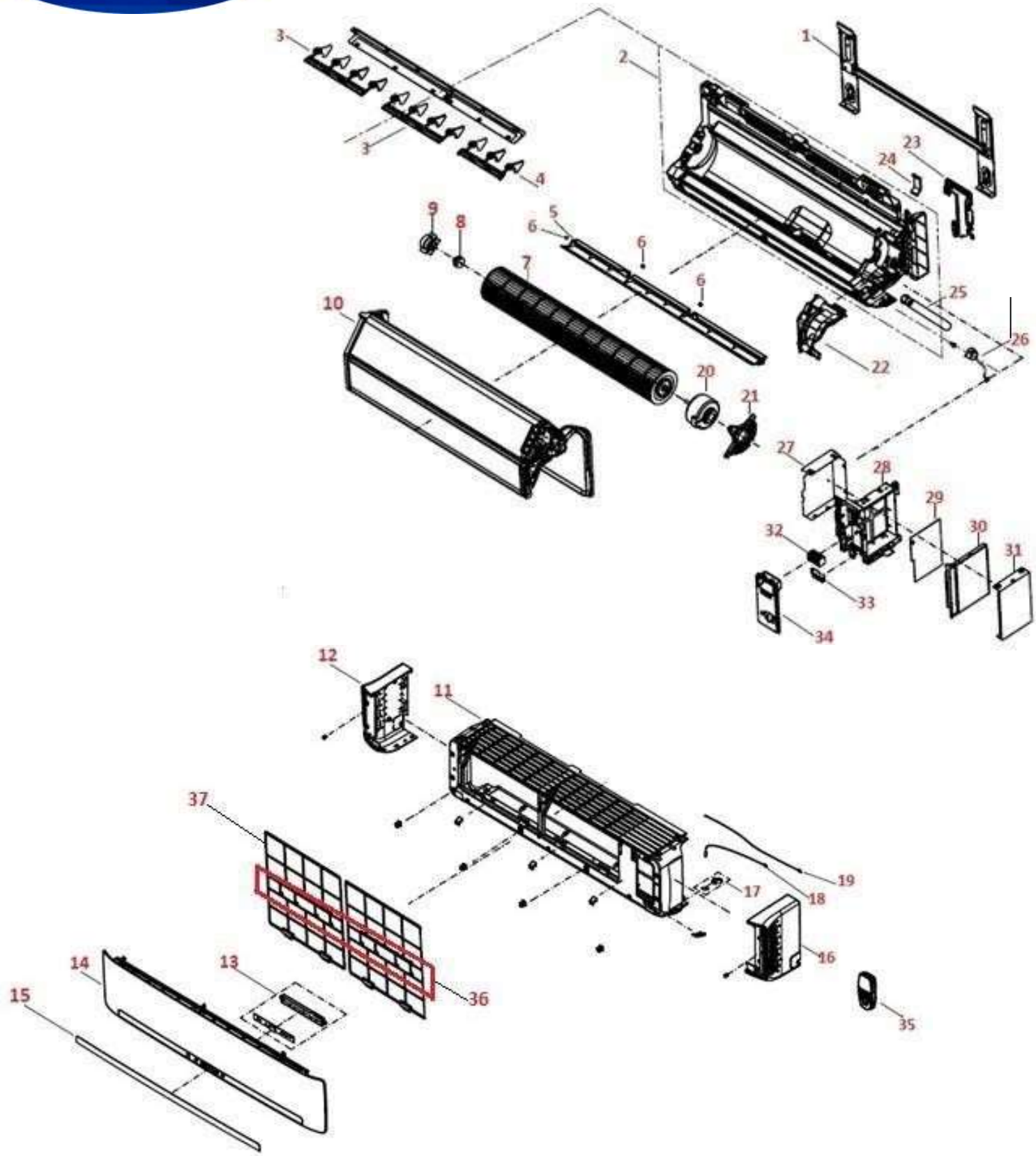
Whirlpool
CORPORATION

MAYTAG

KitchenAid



MINISPLIT WA6267D01



BENITO JUÁREZ #1500 GPE ZITON, CD. GUADALUPE NUEVO LEÓN TEL: 8183377999 Y 49
HORARIOS: LUNES A VIERNES 8:30 A 6:00 PM Y SÁBADOS DE 8:30 A 2:00 PM
WEB: www.denek.com

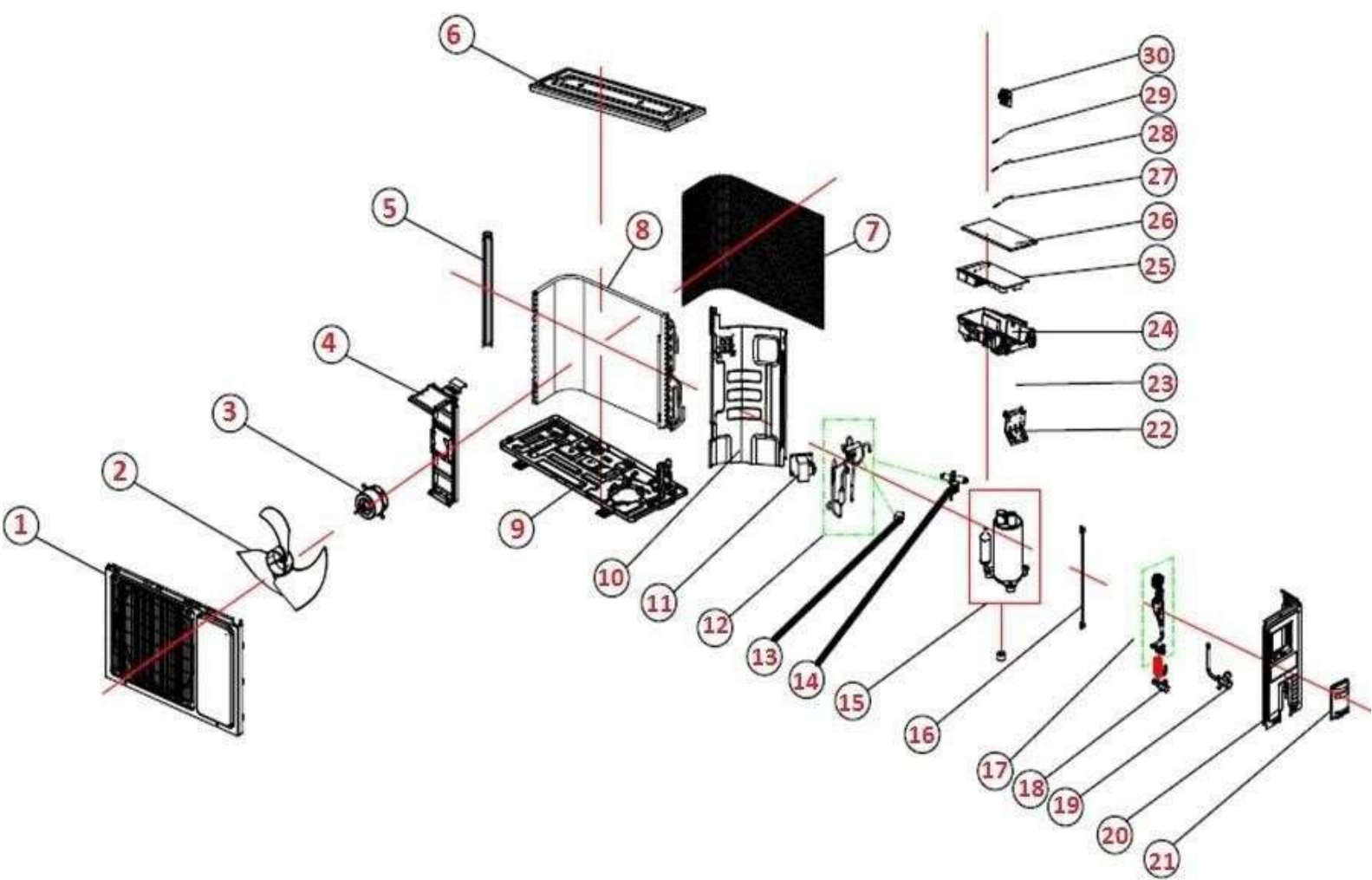


MINISPLIT WA6267D01

No. Ilustración	Descripción	No. Parte
1	INSTALLATION PLATE ASSY	1444531
2	BASE HOLDER PART	1953058
3	LEVEL VANE	1541457
4	VERTICAL LEVEL VANE	1550294
5	LEVEL VANE	1835274
6	AXIS SHEATH	1222824
7	CROSS-FLOW FAN BLADE	1541633
8	BEARING	1223738
9	BAFFLE	1465670
10	REFRIGERATION SYSTEM	1556041
11	SHELL	1835275
12	ORNAMENTAL PART	1835016
13	DISPLAY COMPONENT	1823704
14	PANEL	1834822
15	DISPLAY FILM	4051693
16	ORNAMENTAL PART	1835017
17	SWITCH PANEL ASSY	1823826
18	TEMPERATURE SENSOR	1383891
19	TEMPERATURE SENSOR	1387643
20	DC MOTOR	1561456
21	MOTOR COVER	1541374
22	MOTOR GUARD	1541373
23	BAFFLE	1541361
24	BAFFLE	1541370
25	WATER PIPE PARTS	1470426
26	STEP MOTOR	1819726
27	ELEC JOINT BOX PLATE	1541500
28	ELECTRIC BOX	1840138
29	INDOOR MAIN CONTROL BOARD COMPONENT	1909511
30	ELECTRIC BOX COVER	1541378
31	ELECTRIC BOX COVER	1541507
32	WIRE TERMINAL BOARD	1262152
33	OVER CLAMP	1840141
34	WIRING DISTRIBUTION COVER ASSY	1541379
35	REMOTE CONTROLLER	4046900
36	COMBO FILTER	1542897
37	FILTER	1541387



MINISPLIT WA6267D01



BENITO JUÁREZ #1500 GPE ZITON, CD. GUADALUPE NUEVO LEÓN TEL: 8183377999 Y 49
HORARIOS: LUNES A VIERNES 8:30 A 6:00 PM Y SÁBADOS DE 8:30 A 2:00 PM
WEB: www.denek.com



MINISPLIT WA6267D01

No. Ilustración	Descripción	No. Parte
1	PANEL PARTS	1844019
2	PROPELLER FAN BLADE	1841783
3	AC MOTOR	1841930
4	MOTOR SUPPORTER	1841749
5	MOUNTING PLATE	1841772
6	UPPER BOARD	1841779
7	BACK GUARD	1847186
8	CONDENSER ASSEMBLY	1953919
9	BASE HOLDER PART	1924214
10	CLAPBOARD	1841986
11	PFC INDUCTANCE	1205797
12	4-WAY VALVE ASSEMBLY	1953827
13	FOUR-WAY VALVE COIL	1511783
14	4-WAY VALVE	1408045
15	COMPRESSOR	1941133
16	STRONG ELECTRICITY CONNECT WIRE	1847142
17	CAPILLARY ASSEMBLY	1953920
18	2-WAY VALVE	1849152
19	3-WAY VALVE	1849153
20	RIGHT SIDE BOARD	1841776
21	WIRING DISTRIBUTION COVER ASSY	1849016
22	CONNECTING BOARD	1842392
23	WIRE TERMINAL BOARD	1852125
24	ELECTRIC BOX	1841985
25	CONTROLLER COMPONENT	1953487
26	ELECTRIC BOX COVER	1546706
27	TEMPERATURE SENSOR	1562104
28	TEMPERATURE SENSOR	1822633
29	TEMPERATURE SENSOR	1822634
30	SENSOR MOUNTING PLATE	1937184