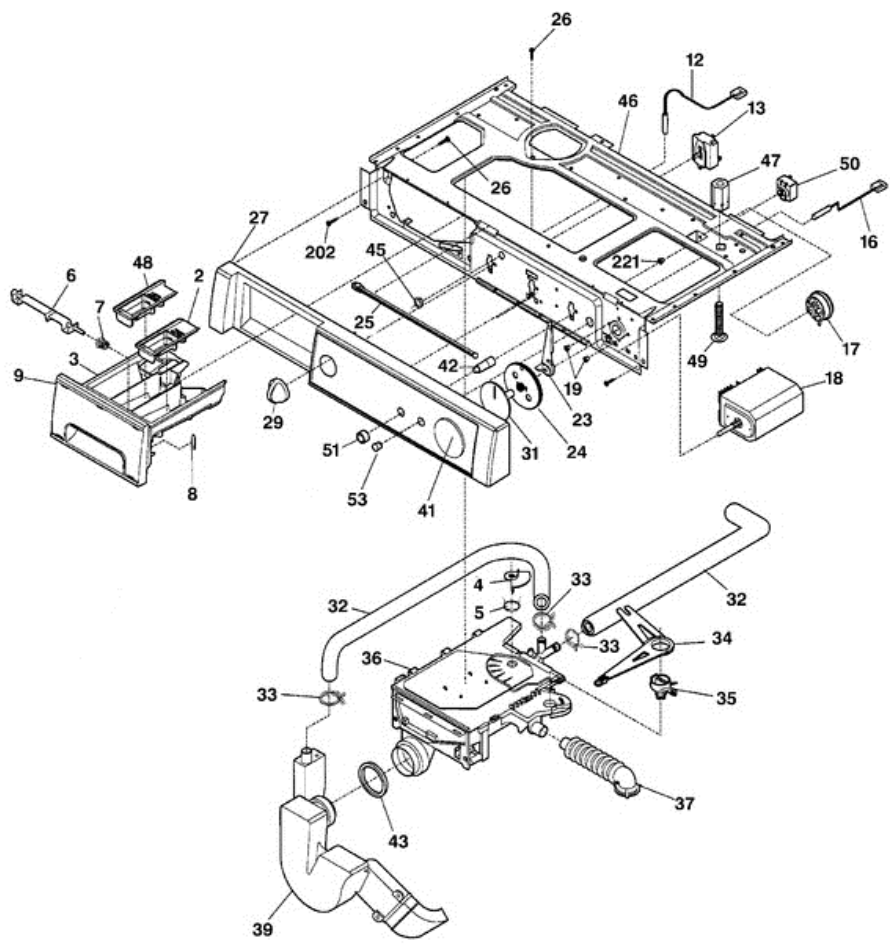


WCCH404V0WW TABLERO





WCCH404V0WW TABLERO

2	WH41X10001	COVER SOFTENER
3	WH41X10003	DRAWER-DISPENSER
4	WH01X10002	PIN
5	WH01X10038	SPRING
6	WH01X10039	LATCH-HANDLE
7	WH01X10005	SPRING
8	WH01X10007	MAGNET
9	WH47X10001	ASM-DISP DRWR HNDLE/TRIM
12	WH12X10165	SWITCH-REED
13	WH12X10166	SWITCH-WATER TEMP
16	WH12X10004	LIGHT-PILOT
17	WH12X10003	SWITCH-PRESSURE
18	WH12X10170	TIMER-WASHER F/L
19	WH02X10057	SCREW-TIMER 10-32X .245
23	WH11X10002	LEVER-CAM
24	WH11X10020	CAM-TIMER
25	WH16X10001	ROD
26	WH02X10007	SCW #8 PAN HD 10-10BX.50
27	WH42X10292	CONTROL PANEL ASM.
29	WH01X10129	KNOB-ROTARY
31	WH11X10021	POINTER-TIMER
32	WH41X10007	HOSE-SIPHON/FILL
33	WH01X10011	CLAMP
34	WH01X10010	ARM-PIVOT
35	WH43X10001	DISP-ECCENTRIC
36	WH41X10006	DIS ASY 1,2,3,4,5,35/37
37	WH41X10013	HOSE-TUB
39	WH41X10060	SIPHON
41	WH01X10130	LENS-POINTER-TIMER
42	WH01X10132	EXTENDER-PUSH TO START
43	WH41X10051	GASKET-SEAL
45	WH01X10037	BUSHING
46	WH46X10039	BRACKET-CONTROLS

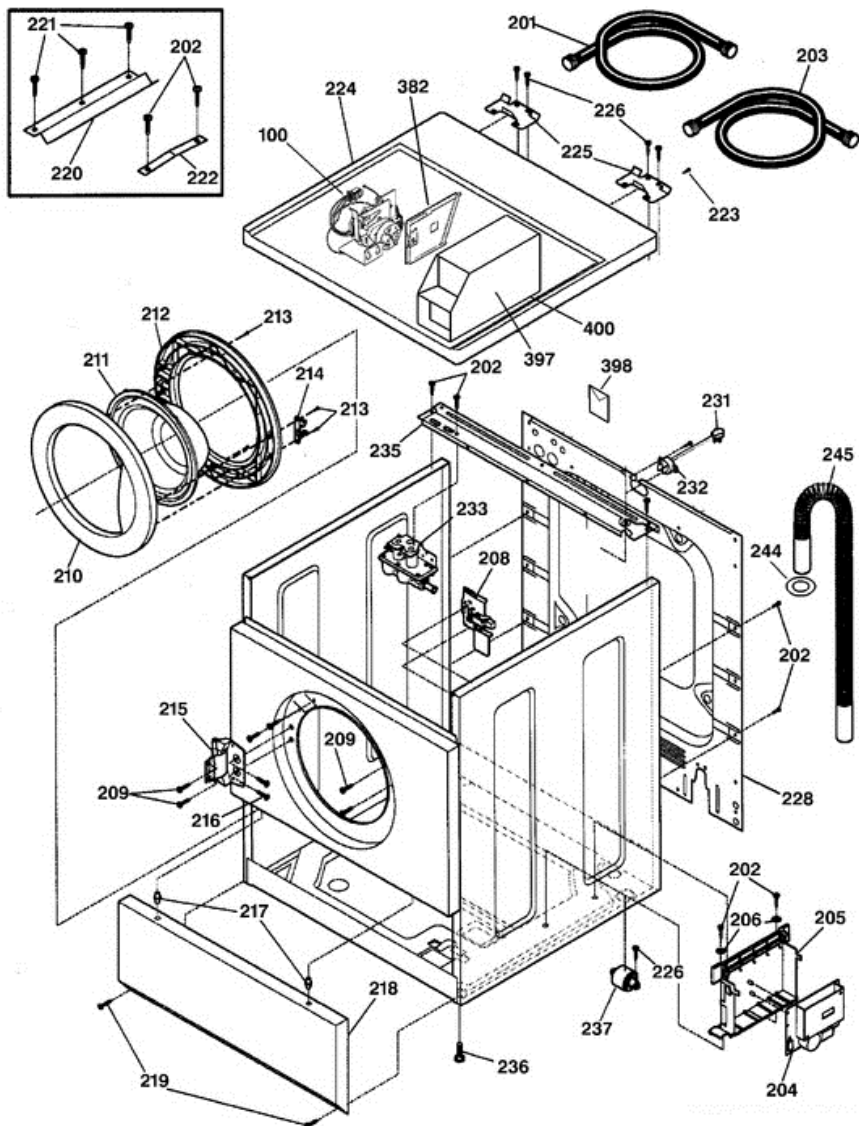
47	WH01X10131	SPACER-SECURITY
48	WH41X10002	COVER BLEACH
49	WH02X10092	BOLT-SECURITY
50	WH12X10167	SWITCH-PUSH TO START
51	WE01X10002	BUTTON-START
53	WH01X10133	LENS
202	WR02X9494	SCREW
221	WH01X10004	SCREW, 8-18AB X 0.375
398	WH44X10080	ASM.-METER CASE MTG HDWE

Distribuidor Autorizado

SurteRápido.com

Venta de Refacciones
Electrodomesticas

WCCH404V0WW GABINETE





WCCH404V0WW GABINETE

100	WH12X10214	START MECHANISM ASM.
201	WH41X10049	HOSE-INLET COLD
202	WR02X9494	SCREW
203	WH41X10050	HOSE-INLET HOT
204	WH12X10060	CONTROL - SPEED
205	WH16X10002	BOX-CONTROL
206	WH02X10008	WASHER .21X.71X.06
208	WH10X10003	LOCK-DOOR ASSY
209	WE02X10017	SCREW 10-16 X .75
209	WH02X10009	SCREW-LOCK, 10-16 X .500
210	WH46X10002	DOOR-OUTER
211	WH46X10003	GLASS-DOOR
212	WH46X10004	DOOR-INNER
213	WH02X10010	SCREW, 10-16X.75
214	WH10X10004	CATCH-DOOR
215	WH01X10092	HINGE/BUSHING DOOR
216	WH02X10085	SCREW-HINGE 10-16X.312
217	WH01X10013	PIN-LOCATING
218	WH46X10005	PANEL SERVICE WH
219	WH02X10012	SCREW-PANEL, 8-18X1.125
220	WH16X10003	BRACKET-TOP, FRONT
221	WH01X10004	SCREW, 8-18AB X 0.375
222	WH01X10014	RETAINER-SPRING
223	WE02X10016	SCREW 8-32 X 3/8
224	WH44X10079	PANEL-TOP
225	WH01X10093	HINGE-TOP PANEL
226	WH02X10013	SCREW, 8-18 X 1/2
228	WH46X10057	PANEL BACK
231	WH19X10001	CORD SERVICE
232	WH01X10016	BUSHING-CORD
233	WH13X0080	VALVE-WATER WH13X80
235	WH16X10041	BACK-REINFORCEMENT
236	WH01X10003	LEG, PAD/NUT

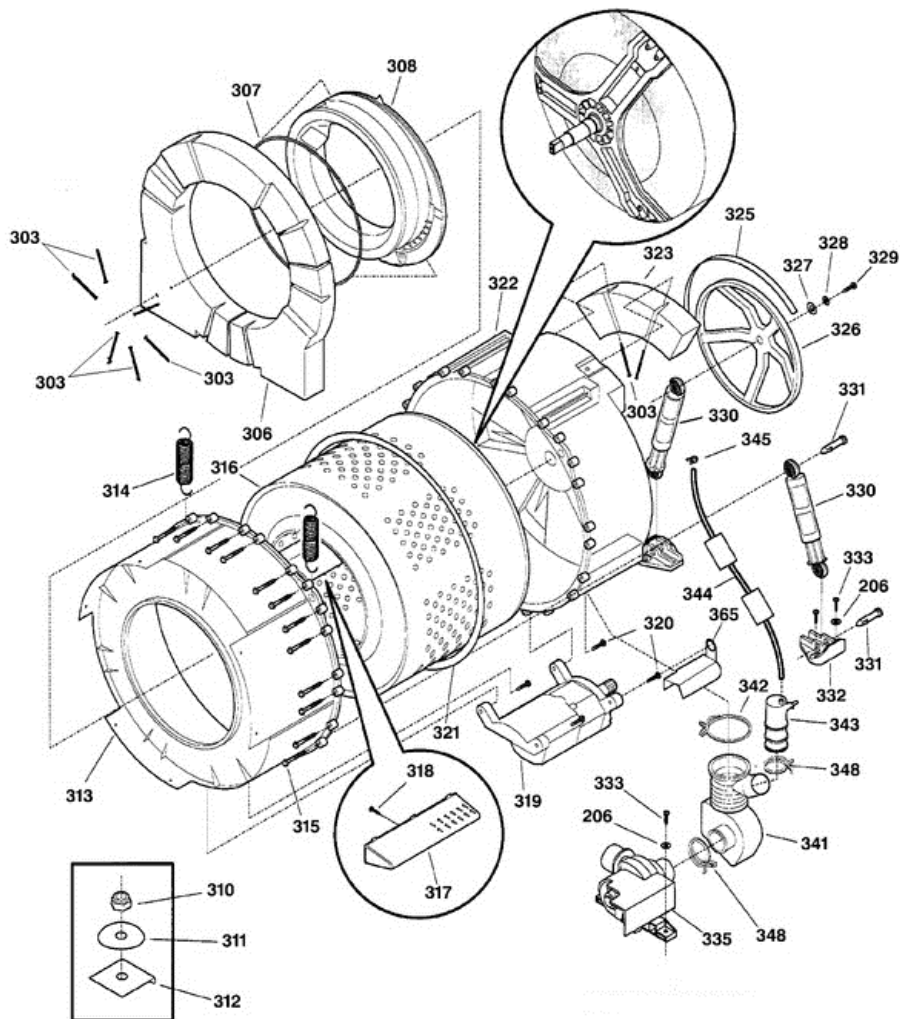
237	WH02X10015	ROLLER-ASSY.
244	WH01X10063	RING DRAIN HOSE
245	WH41X0378	HOSE-DRIAN, 90"
382	WH44X10105	DOOR & LATCH ASM. WH
397	WH44X10106	METER CASE WH
400	WH08X10008	GASKET, METER HSNG

Distribuidor Autorizado

SurteRápido.com

Venta de Refacciones
Electrodomesticas

WCCH404V0WW TAMBOR





WCCH404V0WW TAMBOR

206	WH02X10008	WASHER .21X.71X.06
303	WH02X10087	BOLT 1/4-20X4.05
306	WH45X10041	KIT-COUNTERWT & #3 BOLTS
307	WH08X10001	SPRING-BOOT
308	WH45X10003	BOOT
310	WH02X10019	NUT
311	WH02X10020	WASHER-SPRING
312	WH16X10039	PLATE-WEIGHT
313	WH45X10005	SHELL-FRONT TUB
314	WH01X10022	SPRING/SLEEVE
315	WH02X10021	SCREW 1/4-10X2.165
316	WH45X10006	TUB-SPIN
317	WH16X10008	VANE
318	WH02X10023	SCREW 10-16X.375
319	WH02X10022	MOTOR ASM
320	WH02X10024	SCREW-MOTOR 12-14X1.50
321	WH08X10002	SEAL-SHELL
322	WH45X10007	SHELL-REAR/BEARING
323	WH01X10095	WEIGHT-REAR TOP
325	WH08X10003	BELT
326	WH07X10001	PULLEY-DRUM
327	WH02X10025	WASHER 41X1.500X.120
328	WH02X10026	WASHER-LOCK 3/8
329	WH02X10027	SCREW-PULLEY M10X.92
330	WH17X10001	LEVEL-SHOCK
331	WH01X10024	PIN-LEVEL
332	WH16X10009	BRACKET-SHOCK
333	WH02X10028	SCREW-BRACKET 10-16X.625
335	WH23X10012	PUMP-DRAIN
341	WH41X10052	TRAP
342	WH02X10029	CLAMP
343	WH41X10011	CHAMBER-AIR
344	WH41X10012	TUBE-PRESSURE

345	WH02X10030	CLAMP
348	WH02X10031	CLAMP-PUMP
365	WH41X10023	SHIELD MOTOR CONNECTOR