

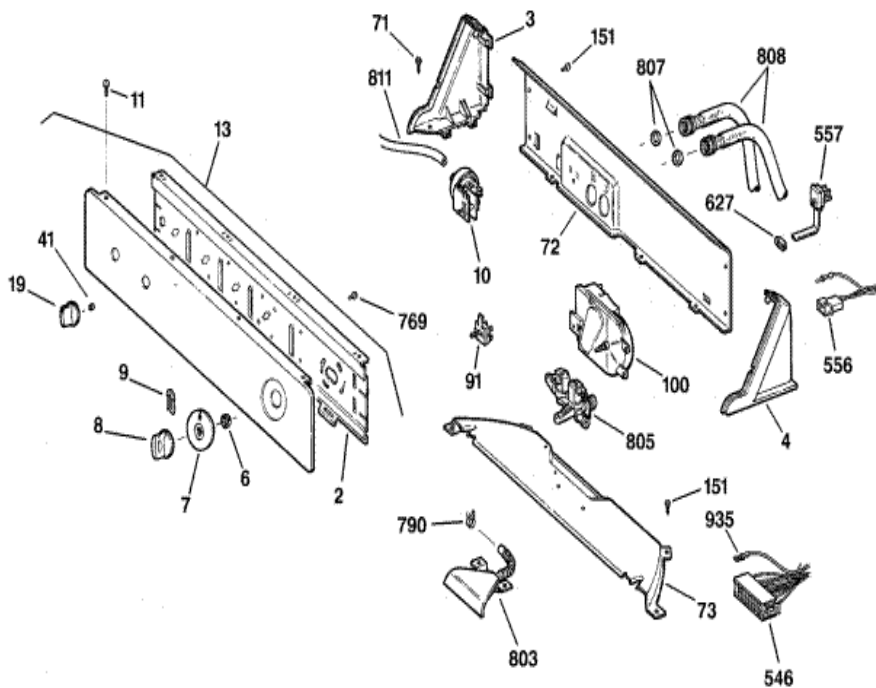
Distribuidor Autorizado

SurteRápido.com

Venta de Refacciones
Electrodomesticas



WJSR1070A1WW TABLERO





WJSR1070A1WW TABLERO

2	WH46X10073	SUPPORT SWITCH (S/P)
3	WH42X10710	END CAP LH WH (S/P)
3	WE19X1002	END CAP LH AD (S/P)
4	WE19X1003	END CAP RH AD (S/P)
4	WH42X10711	END CAP RH WH (S/P)
6	WH2X650	RING COMPRESSION (S/P)
7	WH11X10006	DIAL ASM (S/P)
7	WH11X10015	DIAL ASM (S/P)
8	WH1X2754	KNOB ASM CONTROL (S/P)
8	WH1X2708	KNOB ASM CONTROL (S/P)
9	WH1X2117	CLIP SPRING (S/P)
10	WH12X10065	SWITCH PRESSURE (S/P)
11	WH2X10089	SCR 8-18 AB FLT 9/16 SN (S/P)
13	WH12X10124	CONTROL PANEL ASM (S/P)
13	WH12X10148	CONTROL PANEL ASM (S/P)
13	WH12X10150	CONTROL PANEL ASM (S/P)
13	WH12X10123	CONTROL PANEL ASM (S/P)
19	WE1X1208	KNOB & CLIP ASM AD (S/P)
19	WH1X2721	KNOB & CLIP ASM WH (S/P)
41	WE1X980	U CLIP (S/P)
71	WH2X1205	SCR 8-18 B 1/2 HXW P (S/P)
72	WH46X337	PANEL BACK (S/P)
73	WH46X10047	COVER BOTTOM (S/P)
91	WH12X999	SWITCH ROTARY TEMP. (S/P)
100	WH12X1000	TIMER ASM (S/P)
100	WH12X10149	TIMER ASM (S/P)
151	WH2X1210	SCR 8-18 B IHW 1/2 S N (S/P)
546	WH12X870	HOUSING TERMINAL BK (S/P)
556	WH12X497	HOUSING TERMINAL (S/P)
557	WH19X311	CORDSET ASM (S/P)
627	WH12X10025	STRAIN RELIEF (S/P)
769	WB01X0500	SCR 8-18 B HXW 1/4 S (S/P)

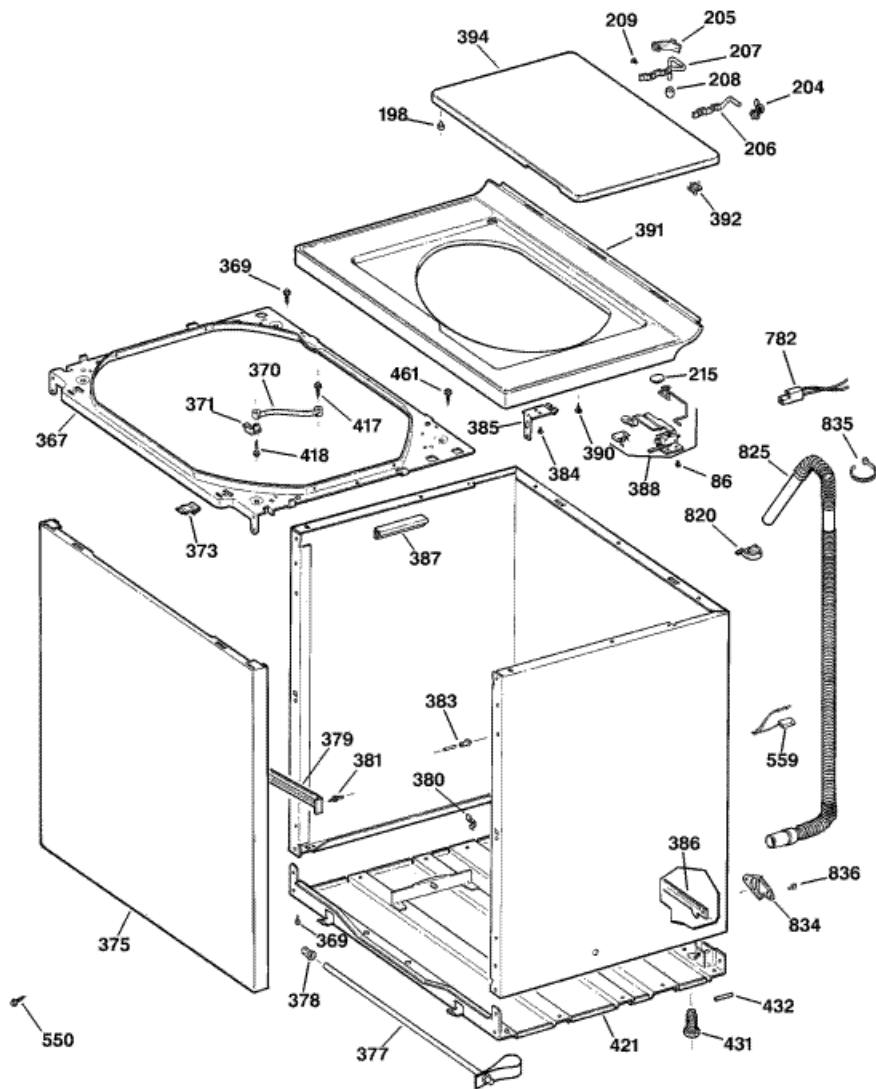
790	WH01X2036	CLAMP HOSE (S/P)
803	WH41X10077	HOSE & WATER INLET (S/P)
805	WH13X10024	VALVE ASM WATER (S/P)
807	WH02X0042	HOSE WASHER (S/P)
808	WH41X10207	HOSE ASM INTAKE (S/P)
811	WH41X0365	HOSE PRESSURE SWITCH (S/P)
935	WD01X1434	TERMINAL SPECIAL (S/P)

Distribuidor Autorizado

SurteRápido.com

Venta de Refacciones
Electrodomesticas

WJSR1070A1WW GABINETE





WJSR1070A1WW GABINETE

86	WH2X940	SCR 8-32 TT FL 1/2 S (S/P)
198	WH1X2722	BUMPER LID (S/P)
204	WH1X2741	BUSHING HINGE (SINGLE) (S/P)
204	WH1X2752	BUSHING HINGE (S/P)
205	WH1X10035	BUSHING HINGE (S/P)
205	WH1X10025	BUSHING HINGE (DOUBLE) (S/P)
206	WH1X2740	WIREFORM HINGE (S/P)
207	WH1X2743	HINGE WIREFORM (LONG) (S/P)
208	WH1X2742	BUMPER HINGE (S/P)
209	WH2X1211	SCREW (S/P)
215	WH1X2089	KNOB ACTUATOR (S/P)
367	WH46X10226	WELD ASM ROD SUPPORT (S/P)
369	WH2X1217	SCR 8-18 AB IHW 7/16 SN (S/P)
370	WH1X2727	STRAP DAMPING (S/P)
371	WH1X2726	RETAINER STRAP (S/P)
373	WH2X279	CLIP LOCKING (S/P)
375	WH46X10109	PANEL FRONT ASM WH (S/P)
375	WH46X10052	PANEL FRONT AD (S/P)
377	WH46X344	BAR SHIPPING (S/P)
378	WH1X2745	BUTTON PLUG (S/P)
379	WH16X514	BRACE (S/P)
380	WH2X1207	CLIP GROUND (S/P)
381	WH2X1190	STUD GROUNDING (S/P)
383	WH2X1189	PIN ALIGNMENT (S/P)
384	WH1X10109	SCR 8-15 A 3/4 SP HXW (S/P)
385	WH1X10422	COVER CLIP (S/P)
386	WH46X342	BAR SELF LEVELING (S/P)
387	WH41X10036	CONDUIT (S/P)
388	WH12X1043	LID SWITCH ASM (S/P)
390	WH1X2724	ISOLATOR (S/P)
391	WH44X1168	COVER ASM FINISHED WH (S/P)
391	WH44X1171	COVER ASM FINISHED AD (S/P)
392	WH1X2734	PROBE LID SWITCH (S/P)

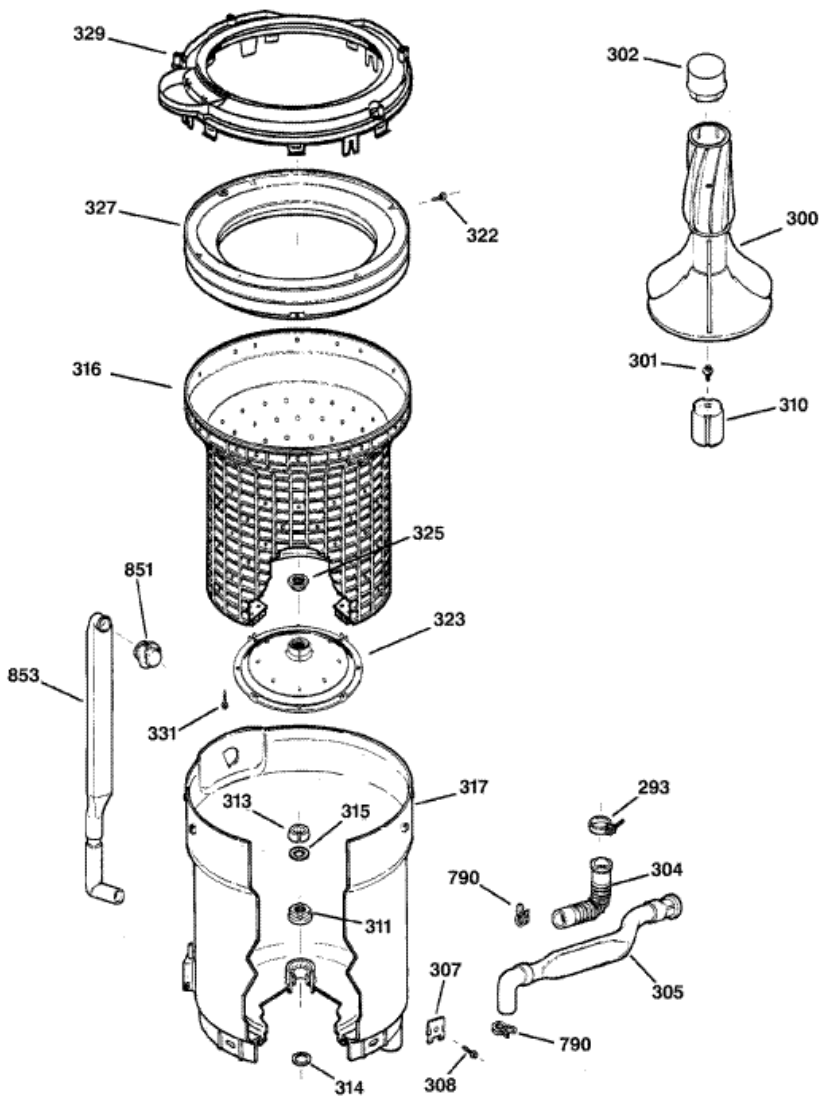
394	WH44X1172	LID ASM FINISHED AD (S/P)
394	WH44X1167	LID ASM FINISHED WH (S/P)
417	WH2X694	SCR 10-12 A HX 1/2 S (S/P)
418	WH2X10003	SCR 8-18 B IHW 1 S (S/P)
421	WH46X10024	BASE ASM (S/P)
431	WH2X1187	LEG LEVELING (S/P)
432	WH2X1188	PIN ROLL (S/P)
461	WZ5X158	SCREW 8-32X3/8 GRD SCR (S/P)
559	WH12X538	HOUSING TERMINAL (S/P)
561	WH49X10017	PK PACK ASM INSTALLATION (S/P)
782	WB17X5060	TERMINAL BLK ASM (2 PIN) (S/P)
820	WH1X2725	CLIP ANTI-SIPHON (S/P)
825	WH41X367	HOSE DRAIN EXTERNAL (S/P)
834	WH16X513	RETAINER HOSE (S/P)
835	WH1X2594	STRAP (S/P)
836	WH2X10002	SCR 8-18 AB IHWP 7/8 S (S/P)

Distribuidor Autorizado

SurteRápido.com

Venta de Refacciones
Electrodomesticas

WJSR1070A1WW TINAS

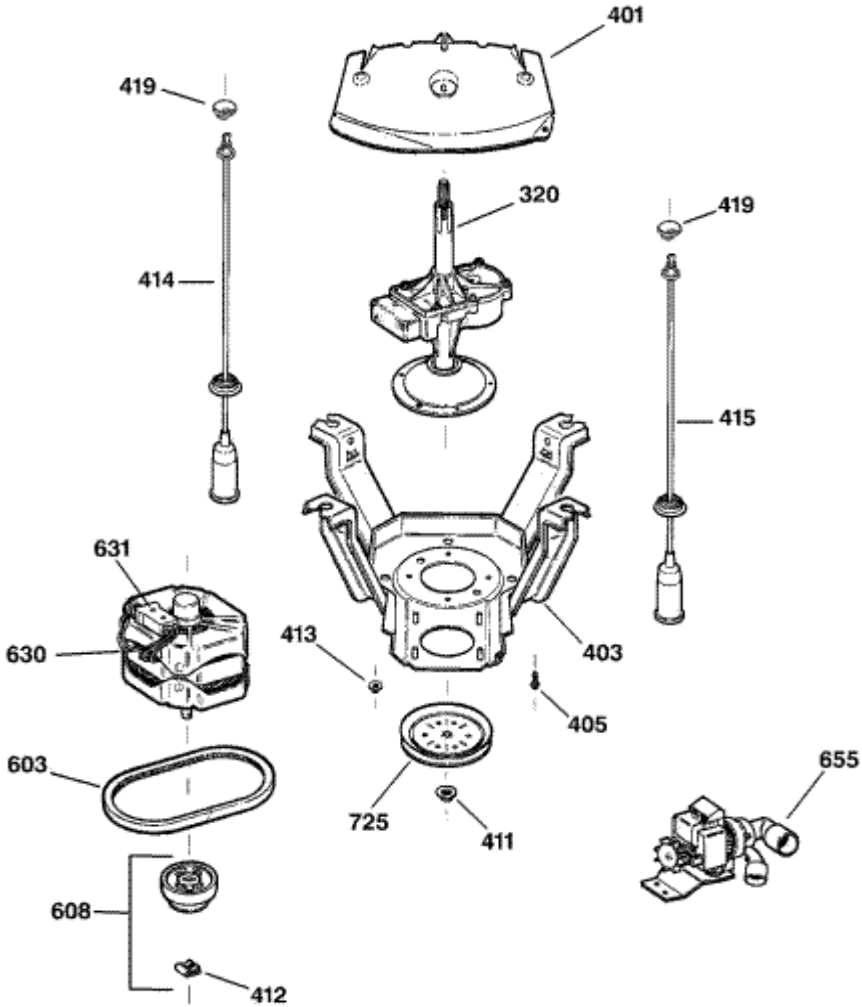




WJSR1070A1WW TINAS

293	WH01X2753	CLAMP TUB OUTLET (S/P)
300	WH43X10033	AGITATOR ASM STRAIGHT (S/P)
301	WH02X10037	SCR 1/4-20 MCH 5/8 S (S/P)
302	WH43X10005	CAP AGITATOR SHORT (S/P)
304	WH41X10163	HOSE DRAIN INLET (TUB TO (S/P)
305	WH41X0374	HOSE DRAIN ASM (S/P)
307	WH01X2730	CLAMP - TUB (S/P)
308	WH02X1209	SCR 5/16-18 TPT IHW S N (S/P)
310	WH49X10042	COUPLING AIR BELL (S/P)
311	WH2X10032	SEAL TUB (S/P)
313	WH2X10265	RING SPLIT (S/P)
314	WH02X1197	WASHER TUB BEARING (S/P)
315	WH02X1199	WASHER HUB (S/P)
316	WH45X10014	BASKET EXTRA LARGE (S/P)
316	WH45X10016	BASKET LARGE (S/P)
317	WH45X10023	TUB ASM LARGE 2.7 CU FT (S/P)
317	WH45X10024	TUB ASM X-LARGE (S/P)
322	WH02X1194	SCREW (S/P)
323	WH45X10027	HUB (S/P)
325	WH02X1193	NUT HUB (S/P)
327	WH45X0152	BALANCE RING ASM (S/P)
329	WH45X10022	COVER TUB (S/P)
331	WH02X10001	SCR 14-10 A TRT 7/8 S (S/P)
790	WH01X2036	CLAMP HOSE (S/P)
851	WH01X2729	GASKET FLOOD HEAD (S/P)
853	WH41X0369	HOSE FLOOD (S/P)

WJSR1070A1WW MOTOR





WJSR1070A1WW MOTOR

320	WH38X10002	TRANSMISSION & BRAKE ASM
401	WH45X10046	SHIELD TUB (S/P)
403	WH17X101	LEG & PLATFORM WELD ASM (S/P)
405	WH02X1201	SCR 1/4-20 B HW 3/4 SNS (S/P)
411	WH02X1203	NUT PULLEY (S/P)
412	WH01X2733	CLIP CLUTCH SPRING (S/P)
413	WH02X1204	NUT MOTOR HEX (S/P)
414	WH16X0544	ROD & SPRING ASM (S/P)
415	WH16X0543	ROD & SPRING ASM (S/P)
419	WH01X10001	SOCKET ROD SUPPORT (S/P)
603	WH01X2026	BELT
608	WH5X256	CLUTCH ASM (S/P)
630	WH49X10029	MOTOR ASM 1 SPEED (S/P)
631	WH49X10029	SWITCH MOTOR START (S/P)
655	WH23X10013	PUMP
725	WH07X0126	PULLEY TRANSMISSION (S/P)