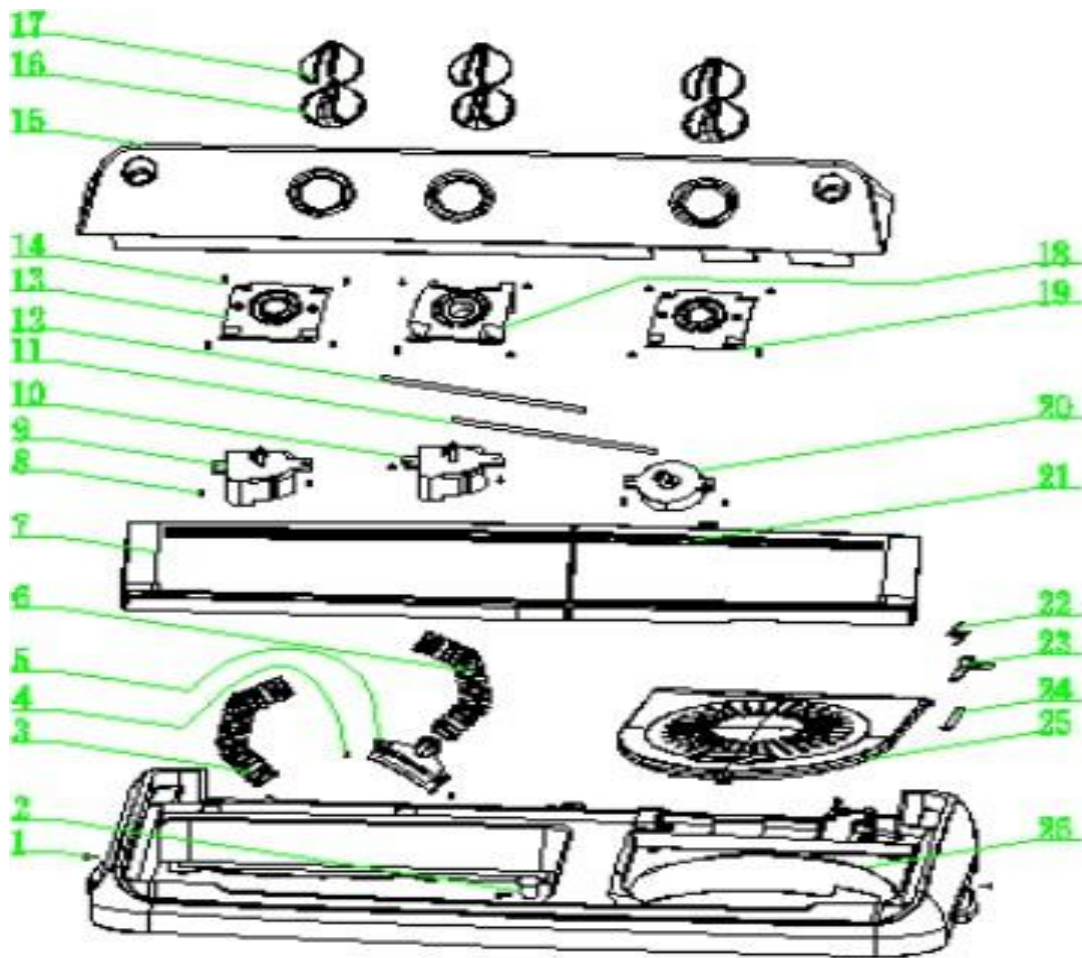


Distribuidor Autorizado

SurteRápido.com

Venta de Refacciones
Electrodomesticas

LAVADORA WLD1025FP





LAVADORA WLD1025FP

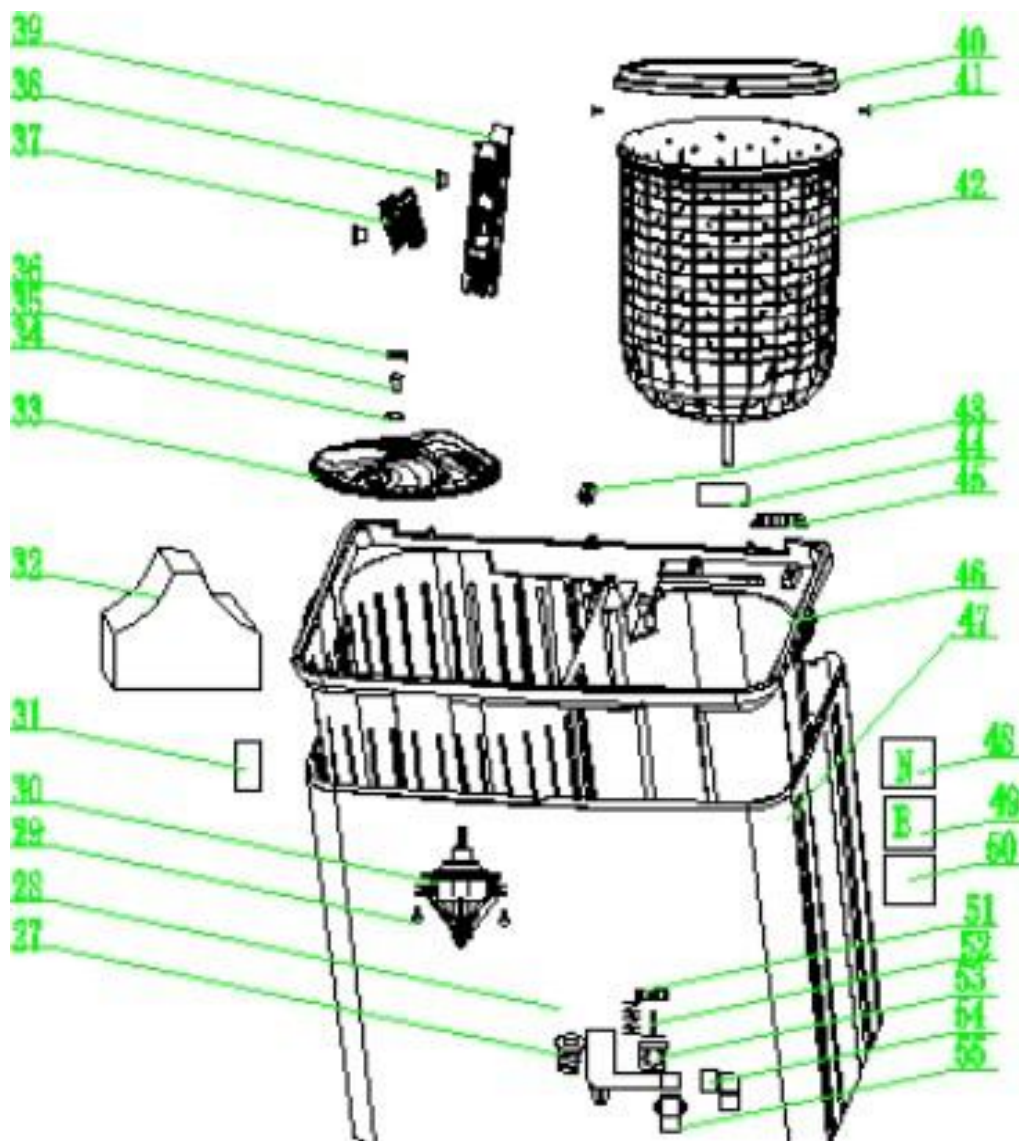
No. Ilus.	DESCRIPCIÓN	Cant.	No. de Parte
1	SCREW	4	3.03.Z041
2	FRAME RUBBER	1	2.4.06.B02-01
3	WASH TUB CONNECT HOSE	1	3.09.D01
4	SCREW	12	3.03.Z072
5	WATER INLET HOPPER	1	2.4.99.A006
6	SPIN TUB CONNECT HOSE	1	3.09.E02
8	SCREW	12	3.03.Z039
9	WASH TIMER	1	3.02.02.A62-A
10	PROGRAM SELECTOR	1	3.02.02.C12-A
11	BREAK BELT	1	3.07.B02
12	DRAIN BELT	1	3.07.A25
13	WASH TIMER FIX BOARD	1	2.4.05.G04
14	SCREW	15	3.03.Z038
16	KNOBS	4	2.4.09.A18-30
17	DECORATION OF KNOB	4	2.4.09.B09-B
18	SELECTOR FIX BOARD	1	2.4.05.I05
19	SPIN TIMER FIX BOARD	1	2.4.05.H04
20	SPIN TIMER	1	3.02.02.B06-A
21	SPIN LID	1	2.4.07.02.A08-10
22	RIGHT SPRING FOR SPIN LID	1	3.03.J03
23	SAFETY SWITCH	1	3.02.04.A01-A
24	SAFETY SWITCH SLEEVE	0.004	3.01.11
25	SPIN TUB CAP	1	2.4.10.A01
26	FRAME	1	2.4.06.A27-01

Distribuidor Autorizado

SurteRápido.com

Venta de Refacciones
Electrodomesticas

LAVADORA WLD1025FP



LAVADORA WLD1025FP

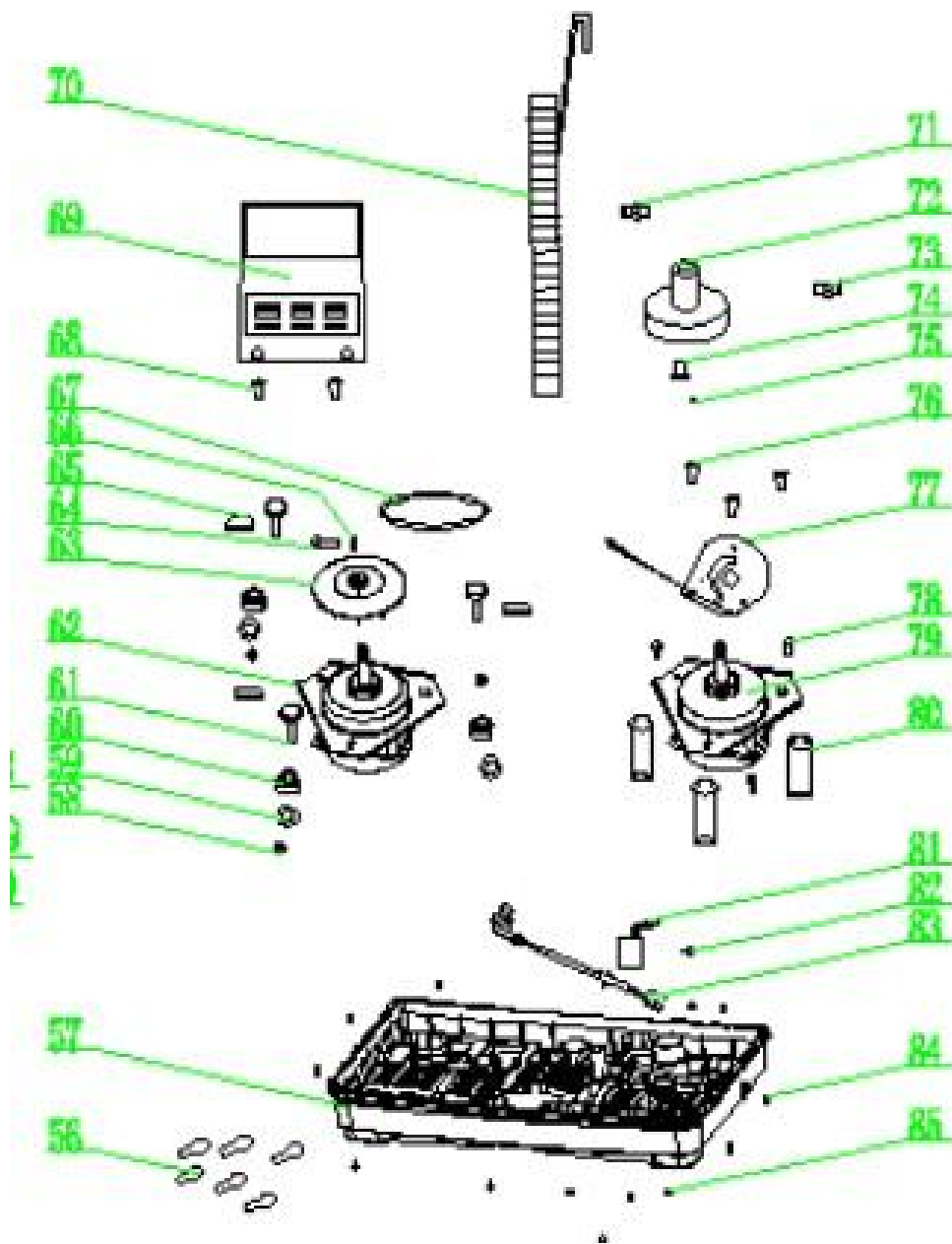
No. Ilus.	DESCRIPCIÓN	Cant.	No. de Parte
27	DRAIN VALVE CORE	1	3.06.G01
28	COMPRESS SPRING	1	3.03.001
29	SCREW	4	3.03.Z044
34	CUSHION OF PULSATOR SCREW	1	3.03.Z086
35	PULSATOR SCREW	1	3.03.Z082
36	PULSATOR SCREW COVER	1	2.4.08.B02-01
37	LINT FILTER	1	2.4.01.F01-01
38	SHULT VALVE	1	3.06.J01
39	OVER-FLOW BOARD	1	2.4.01.E01-01
40	BALANCE RING	1	2.4.04.C03-01
41	SCREW	7	3.03.Z073
42	SPIN TUB	1	2.4.04.A04-01
43	FILTER COVER	1	2.4.01.G04-01
44	SPIN TUB RUBBER SEAL	1	3.06.B01
45	PLASTIC SUPPORT OF SEAL	1	2.4.99.Z014
48	"N" STICKER	1	3.04.99.007
49	"E" STICKER	1	3.04.05.J002
50	AL FOIL	1	3.07.Z04
51	DRAIN VALVE CAP	1	2.4.99.H001
52	PULL POLE	1	2.4.99.Z032
53	VALVE BASE	1	2.4.99.F002
54	ELBOW JOINT	1	3.01.04
55	DRAIN JOINT	1	3.01.05

Distribuidor Autorizado

SurteRápido.com

Venta de Refacciones
Electrodomesticas

LAVADORA WLD1025FP



LAVADORA WLD1025FP

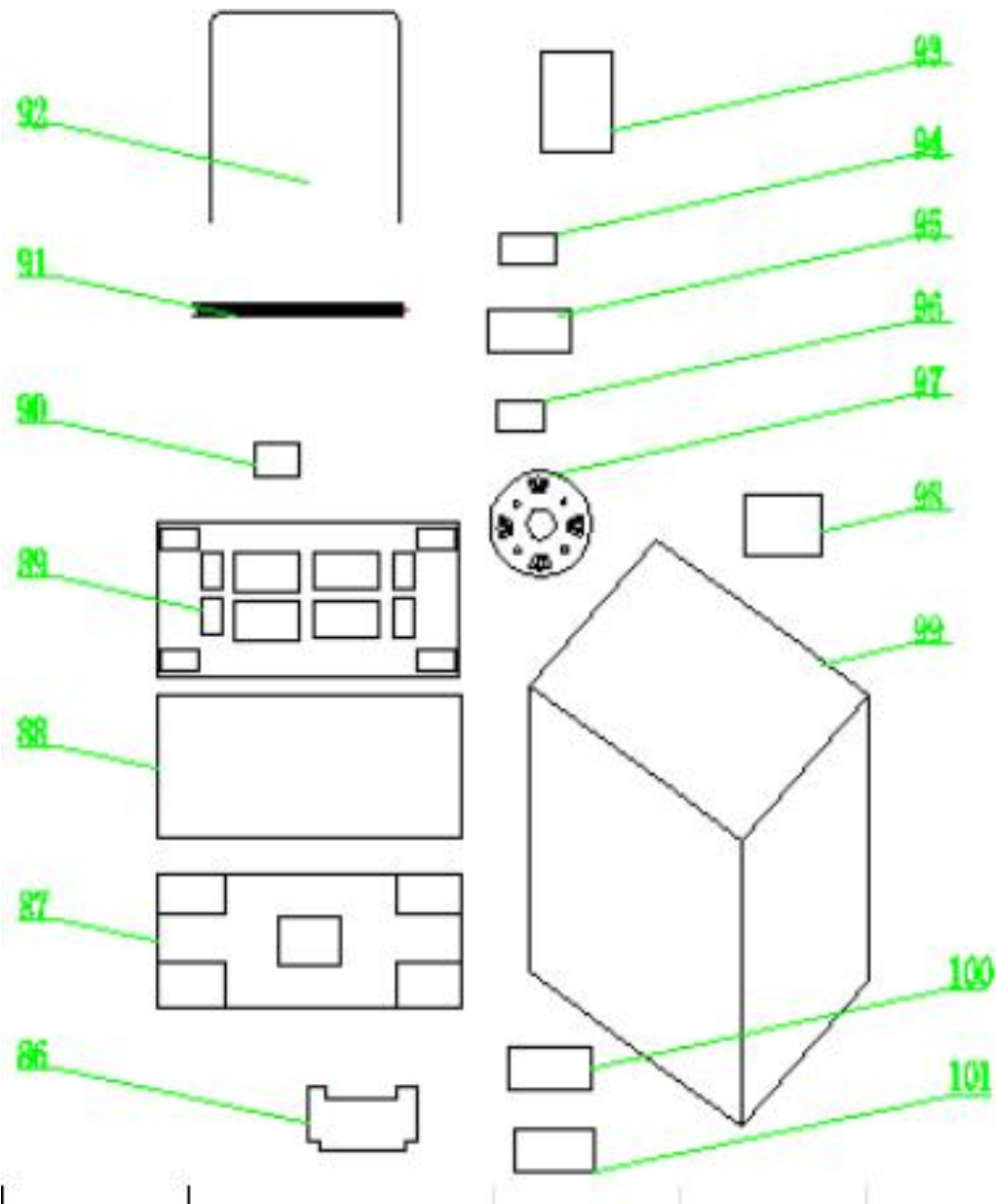
No. Ilus.	DESCRIPCIÓN	Cant.	No. de Parte
56	CONNECTION CAP	8	3.01.04
58	SCREW FOR MOTOR	3	3.01.05
59	CUSHION OF MOTOR	3	3.07.C03
60	BOTTOM RUBBER OF MOTOR	3	3.03.Z125
61	COMBINE BOLT FOR MOTOR	3	3.03.Z104
64	BOLT	1	3.06.E01
65	UPPER RUBBER FOR MOTOR	3	3.03.Z010
66	NUT	2	3.03.Z001
67	V-BELT	1	3.06.D01
68	SCREW	3	3.03.Z026
69	BACK COVER	1	3.06.A13
70	DRAIN HOSE	1	3.03.Z037
71	COMBINE BOLT	2	2.4.12.06-01
72	COUPLER	1	3.09.B03
73	COMBINE BOLT	1	3.03.Z006
74	INSLUTION SLEEVE	1	3.03.M02
75	CUSHION FOR INSLUTION SLEEVE	1	3.03.Z008
76	SCREW	3	2.4.99.Z008
77	BREAK WHEEL	1	3.03.Z114
78	SCREW	3	3.03.Z061
79	SPIN MOTOR	1	3.03.H01
80	DAMPER	3	3.03.Z043
82	FUSE	1	2.1.D057
83	POWER CORD	1	3.03.Q01
84	SCREW	11	3.02.12.A01-A
85	PLASTIC BASE OF DAMPER	3	3.02.03.A62-A

Distribuidor Autorizado

SurteRápido.com

Venta de Refacciones
Electrodomesticas

LAVADORA WLD1025FP





LAVADORA WLD1025FP

No. Ilus.	DESCRIPCIÓN	Cant.	No. de Parte
86	SPIN TUB FOAM	1	2.3.C03
90	FABRIC FOR WIRE CONNECTION	1	3.07.D01
91	INLET HOSE	1	3.09.C01
93	CAUTION LABEL	1	3.04.05.I013
95	BAG FOR MANUAL	1	3.05.2.E01
96	BAG FOR WIRE CONNECTION	1	3.05.2.C02
97	SAFETY COVER	1	2.4.10.B02-01
98	RATING LABEL	1	3.04.02.313
100	CARTON BOX LABEL	1	3.04.05.A091
101	ELECTRIC CAUTION LABEL	2	3.04.05.C011