

EXPLOSIONADO DE PARTES



MICROONDAS DE IMPORTACIÓN

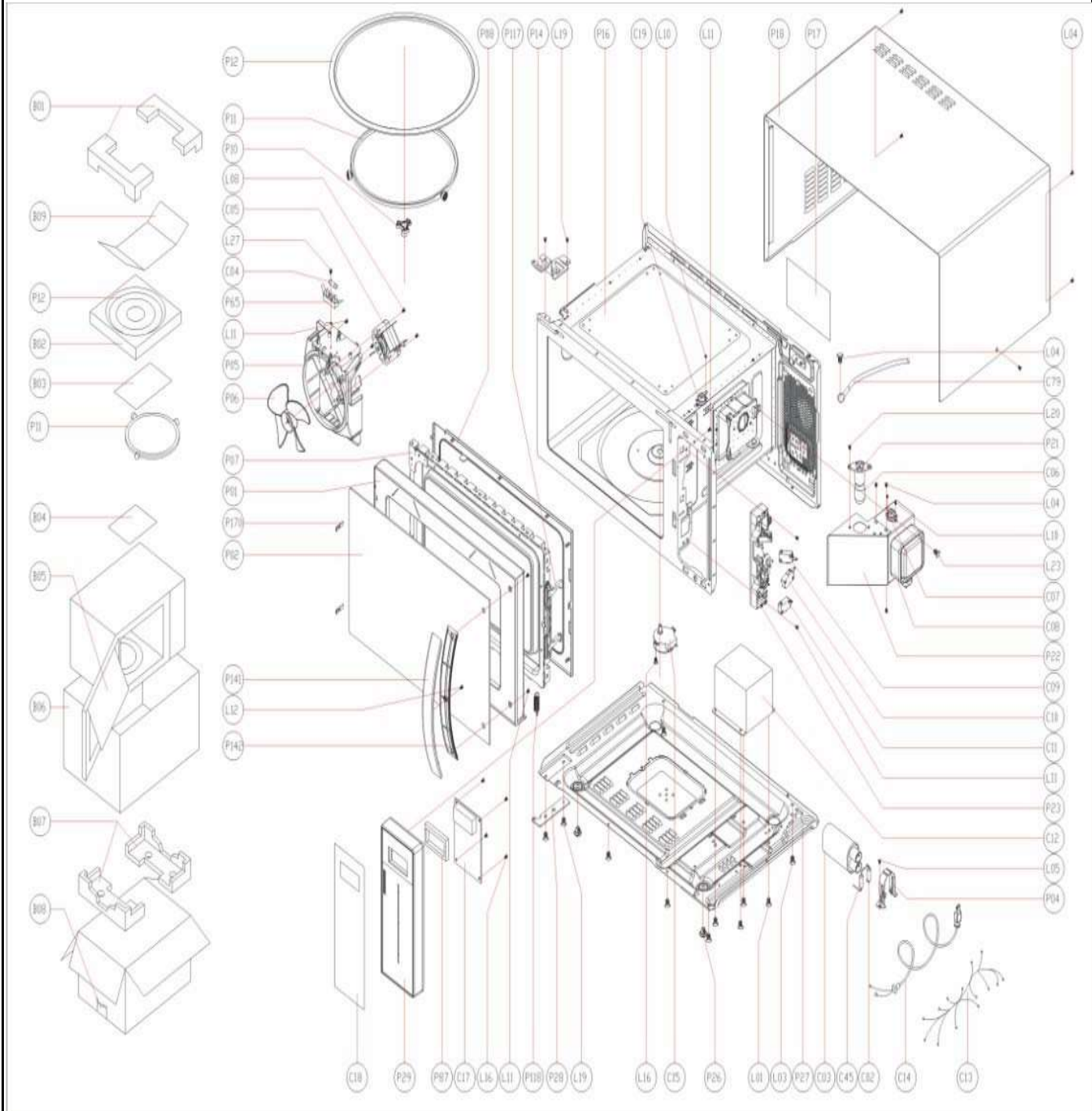
Modelo:

WM1010Q00

Marca
Capacidad
Color

Whirlpool
1.0 Cu Ft
Blanco

CABINET AND CONSOLE PARTS



| Marca | | Whirlpool | |
|-----------------------|------------------------|------------------|-----------------|
| Capacidad | | 1.0 Cu Ft | |
| Color | | Blanco | |
| TOP AND CONSOLE PARTS | | | |
| Re f | Descripción | C a n t | Numero de Parte |
| P01 | door (with inlaid) | 1 | SED309P3H-P01 |
| P02 | door window | 1 | SED309P3H-P02 |
| P04 | capacitor holder | 1 | SED309P3H-P04 |
| P05 | fan shroud | 1 | SED309P3H-P05 |
| P06 | fan blade | 1 | SED309P3H-P06 |
| P07 | door frame | 1 | SED309P3H-P07 |
| P08 | choke cover | 1 | SED309P3H-P08 |
| P10 | shaft | 1 | SED309P3H-P10 |
| P11 | roller ring | 1 | SED309P3H-P11 |
| P12 | glass tray | 1 | SED309P3H-P12 |
| P13 | splash shield | 1 | SED309P3H-P13 |
| P14 | upper hinge | 1 | SED309P3H-P14 |
| P16 | cavity | 1 | SED309P3H-P16 |
| P17 | label | 1 | SED309P3H-P17 |
| P18 | outer enclosure | 1 | SED309P3H-P18 |
| P21 | lamp socket | 1 | SED309P3H-P21 |
| P22 | air duct | 1 | SED309P3H-P22 |
| P23 | microswitch mounting | 1 | SED309P3H-P23 |
| P26 | foot | 1 | SED309P3H-P26 |
| P27 | base plate | 1 | SED309P3H-P27 |
| P28 | lower hinge | 1 | SED309P3H-P28 |
| P29 | keyboard (with inlaid) | 1 | SED309P3H-P29 |
| P65 | fuse bracket | 1 | SED309P3H-P65 |
| P87 | board seal | 1 | SED309P3H-P87 |
| P117 | door hook | 1 | SED309P3H-P117 |
| P118 | door hook spring | 1 | SED309P3H-P118 |
| P141 | handle cover(front) | 1 | SED309P3H-P141 |
| P142 | handle cover(back) | 1 | SED309P3H-P142 |
| P170 | glass clip | 1 | SED309P3H-P170 |
| C02 | h.v .diode | 1 | SED309P3H-C02 |
| C03 | h.v. capacitor | 1 | SED309P3H-C03 |
| C04 | fuse 15 amps | | SED309P3H-C04 |
| C05 | fan motor | 1 | SED309P3H-C05 |
| C06 | lamp | 1 | SED309P3H-C06 |
| C07 | thermostat 180° | 1 | SED309P3H-C07 |
| C08 | magnetron | 1 | SED309P3H-C08 |
| C09 | microswitch 302C | 1 | SED309P3H-C09 |
| C10 | microswitch 202C | 1 | SED309P3H-C10 |
| C11 | microswitch 202C | 1 | SED309P3H-C11 |
| C12 | transformer | 1 | SED309P3H-C12 |

| | | | |
|------------------|--------------------|------------------|------------------------|
| Marca | | Whirlpool | |
| Capacidad | | 1.0 Cu Ft | |
| Color | | Blanco | |
| Re f | Descripción | C a n t | Numero de Parte |
| C13 | wiring harness | 1 | SED309P3H-C13 |
| C14 | power cord | 1 | SED309P3H-C14 |
| C15 | turntable motor | 1 | SED309P3H-C15 |
| C17 | p.c board | 1 | SED309P3H-C17 |
| C18 | thin film swith | 1 | SED309P3H-C18 |
| C19 | thermostat 105° | 1 | SED309P3H-C19 |
| C79 | green earth line | 1 | SED309P3H-C79 |
| B01 | upper foam cushion | 1 | SED309P3H-B01 |
| B02 | turntable cushion | 1 | SED309P3H-B02 |
| B03 | plastic bag | 1 | SED309P3H-B03 |
| B04 | manual | 1 | SED309P3H-B04 |
| B05 | protection film | 1 | SED309P3H-B05 |
| B06 | plastic bag | 1 | SED309P3H-B06 |
| B07 | lower cushion | 1 | SED309P3H-B07 |
| B08 | carton | 1 | SED309P3H-B08 |
| B09 | paper card | 1 | SED309P3H-B09 |