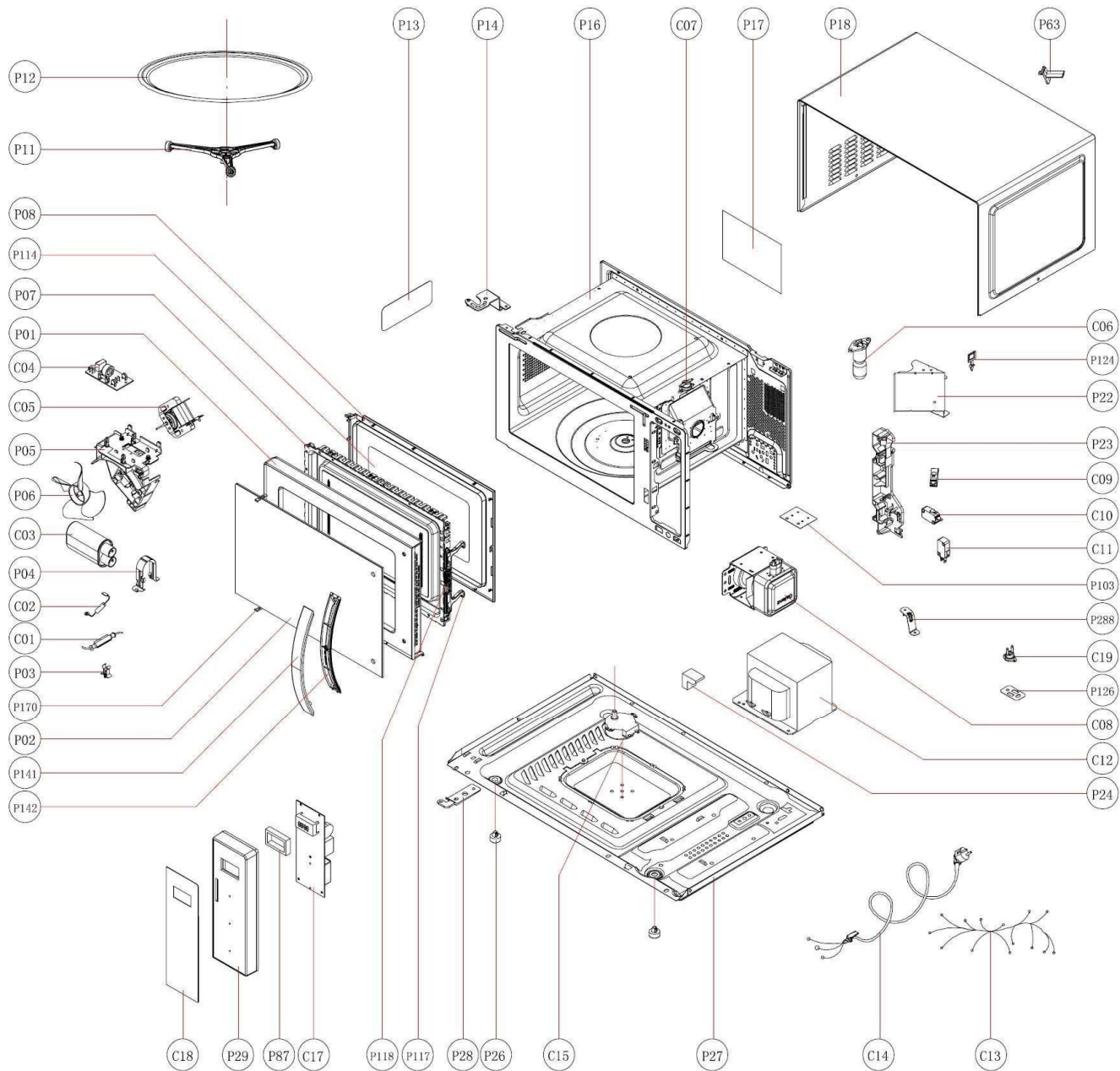




# EXPLOSIONADO DE PARTES — MICROONDAS IMPORTADO —

MODELO | WM1207D00



<b>No.</b>	<b>DESCRIPCIÓN</b>	<b>Cant.</b>	<b>No. de Parte</b>
<b>P01</b>	Door (with inlaid)	1	****
<b>P02</b>	Door window	1	****
<b>P03</b>	Fuse socket	1	WM1207D-P03
<b>P04</b>	Capacitor holder	1	WM1207D-P04
<b>P05</b>	Fan bracket	1	WM1207D-P05
<b>P06</b>	Fan blade	1	WM1207D-P06
<b>P07</b>	Door frame	1	WM1207D-P07
<b>P08</b>	Shielding board	1	****
<b>P11</b>	Roller ring	1	WM1207D-P11
<b>P12</b>	Glass turntable	1	WM1207D-P12
<b>P13</b>	Splash shield mica sheer	1	WM1207D-P13
<b>P14</b>	Upper hinge	1	WM1207D-P14
<b>P16</b>	Cavity	1	WM1207D-P16
<b>P17</b>	Label	1	WM1207D-P17
<b>P18</b>	Outer enclosure	1	WM1207D-P18
<b>P22</b>	Air duct bracket	1	WM1207D-P22
<b>P23</b>	Switch mount	1	WM1207D-P23
<b>P24</b>	Shock absorption rubber	1	WM1207D-P24
<b>P26</b>	Foot	2	WM1207D-P26
<b>P27</b>	Base plate	1	WM1207D-P27
<b>P28</b>	Lower hinge	1	WM1207D-P28
<b>P29</b>	Face board	1	WM1207D-P29
<b>P63</b>	Buckle	1	WM1207D-P63
<b>P87</b>	Seal	1	WM1207D-P87
<b>P103</b>	Wind shield	1	WM1207D-P103
<b>P114</b>	Flake(in door frame)	1	WM1207D-P114
<b>P117</b>	Door hook	1	WM1207D-P117
<b>P118</b>	Door hook spring	1	WM1207D-P118
<b>P124</b>	Clamp holder	1	WM1207D-P124
<b>P126</b>	Mica flake	1	WM1207D-P126
<b>P141</b>	Handle cover(front)	1	WM1207D-P141
<b>P142</b>	Handle cover(back)	1	WM1207D-P142
<b>P170</b>	Glass clip	2	WM1207D-P170
<b>P288</b>	Magnetron bracket	1	WM1207D-P288

<b>No.</b>			
<b>Ilus.</b>	<b>DESCRIPCIÓN</b>	<b>Cant.</b>	<b>No. de Parte</b>
<b>C01</b>	H.V.fuse	1	WM1207D-C01
<b>C02</b>	H.V.diode	1	WM1207D-C02
<b>C03</b>	H.V. capacitor	1	WM1207D-C03
<b>C04</b>	Noisefilter	1	WM1207D-C04
<b>C05</b>	Fan motor	1	WM1207D-C05
<b>C06</b>	Lamp and socket	1	WM1207D-C06
<b>C07</b>	Thermostat 1	1	WM1207D-C07
<b>C08</b>	Magnetron	1	WM1207D-C08
<b>C09</b>	Microswitch	1	WM1207D-C09
<b>C10</b>	Microswitch	1	WM1207D-C10
<b>C11</b>	Microswitch	1	WM1207D-C11
<b>C12</b>	Transformer	1	WM1207D-C12
<b>C13</b>	Wiring harness	1	WM1207D-C13
<b>C14</b>	Power cord	1	WM1207D-C14
<b>C15</b>	Turntable motor	1	WM1207D-C15
<b>C17</b>	P.C. board	1	WM1207D-C17
<b>C18</b>	Thin film switch	1	WM1207D-C18
<b>C19</b>	Thermostat	1	WM1207D-C19