

Whirlpool

SERVICE

CENTRO DE SOLUCIONES



LO ORIGINAL MARCA DIFERENCIA

EXPLOSIONADO DE PARTES

- MICROONDAS -

MODELO | WM1511D

acros

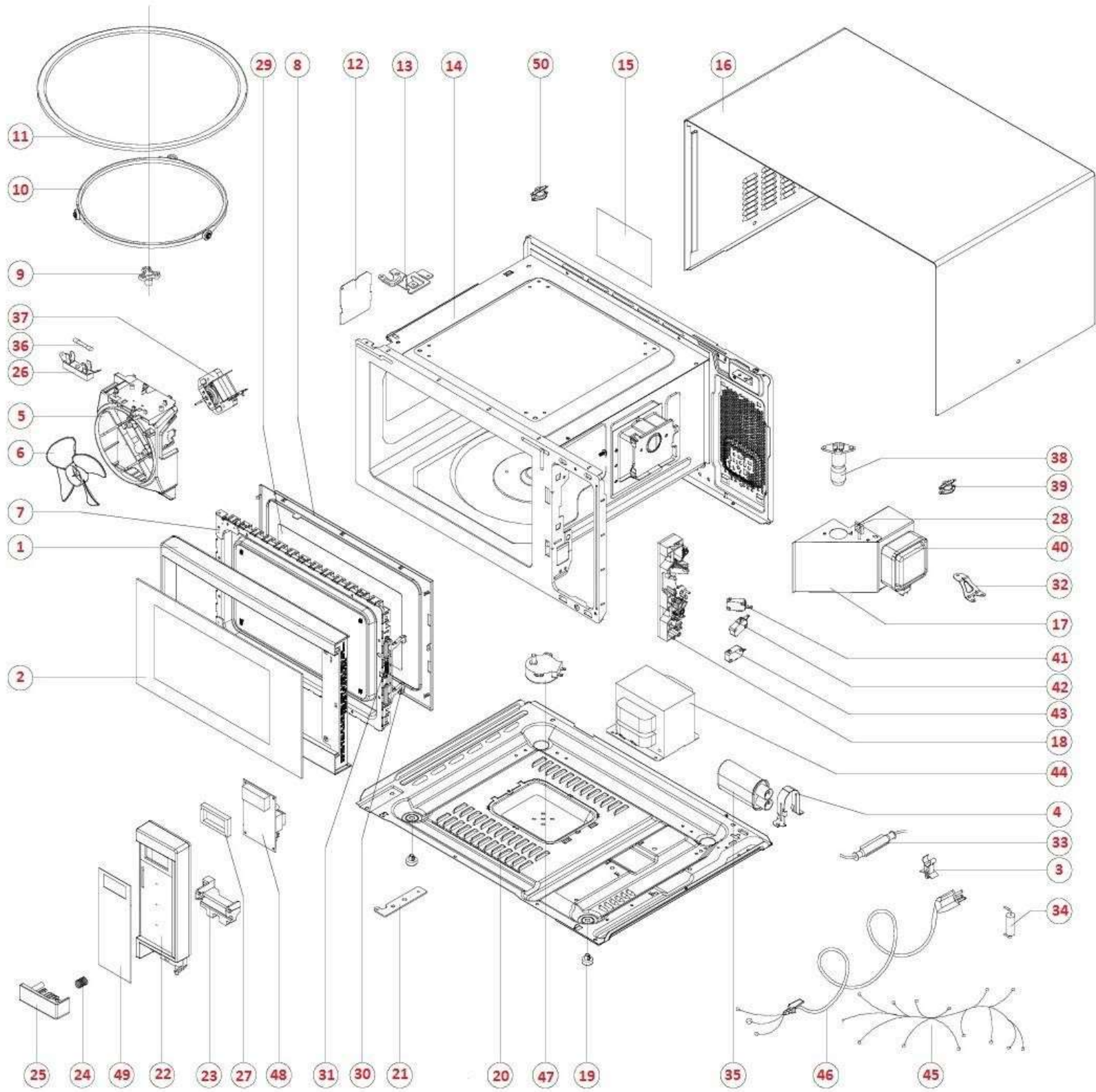
Whirlpool
CORPORATION

MAYTAG

KitchenAid



MICROONDAS WM1511D



Ilus.	DESCRIPTION	Cant.	Part Num.
1	Door frame	1	WM1511D-P01
2	Door window board	1	WM1511D-P02
3	Fuse socket	1	WM1511D-P03
4	Capacitor holder	1	WM1511D-P04
5	Fan bracket	1	WM1511D-P05
6	Fan blade	1	WM1511D-P06
7	Door plate	1	WM1511D-P07
8	Shielding board	1	WM1511D-P08
9	Connector	1	WM1511D-P10
10	Roller ring	1	WM1511D-P11
11	Glass turntable	1	WM1511D-P12
12	Splash shield mica sheer	1	WM1511D-P13
13	Upper hinge	1	WM1511D-P14
14	Cavity	1	WM1511D-P16
15	Rear nameplate	1	WM1511D-P17
16	Outer enclosure	1	WM1511D-P18
17	Air duct bracket	1	WM1511D-P22
18	Switch mount	1	WM1511D-P23
19	Foot	2	WM1511D-P26
20	Base plate	1	WM1511D-P27
21	Lower hinge	1	WM1511D-P28
22	Face board	1	WM1511D-P29
23	Lever	1	WM1511D-P31
24	Button spring	1	WM1511D-P32
25	Button	1	WM1511D-P33
26	Fuse bracket	1	WM1511D-P65
27	Seal	1	WM1511D-P87
28	Clamp holder	1	WM1511D-P124
29	inlaid	1	WM1511D-P114
30	door hook	1	WM1511D-P117
31	door hook spring	1	WM1511D-P118
32	Magnetron bracket	1	WM1511D-P288
33	H.v.fuse	1	WM1511D-C01
34	H.v .diode	1	WM1511D-C02
35	H.v. capacitor	1	WM1511D-C03
36	Fuse	1	WM1511D-C04
37	Fan motor	1	WM1511D-C05
38	Lamp	1	WM1511D-C06
39	Thermostat 1	1	WM1511D-C07
40	Magnetron	1	WM1511D-C08
41	Microswitch	1	WM1511D-C09
42	Microswitch	1	WM1511D-C10
43	Microswitch	1	WM1511D-C11
44	Transformer	1	WM1511D-C12

45	Wiring harness	1	WM1511D-C13
46	Power cord	1	WM1511D-C14
47	Turntable motor	1	WM1511D-C15
48	P.c. board	1	WM1511D-C17
49	Thin film switch	1	WM1511D-C18
50	Thermostat	1	WM1511D-C19