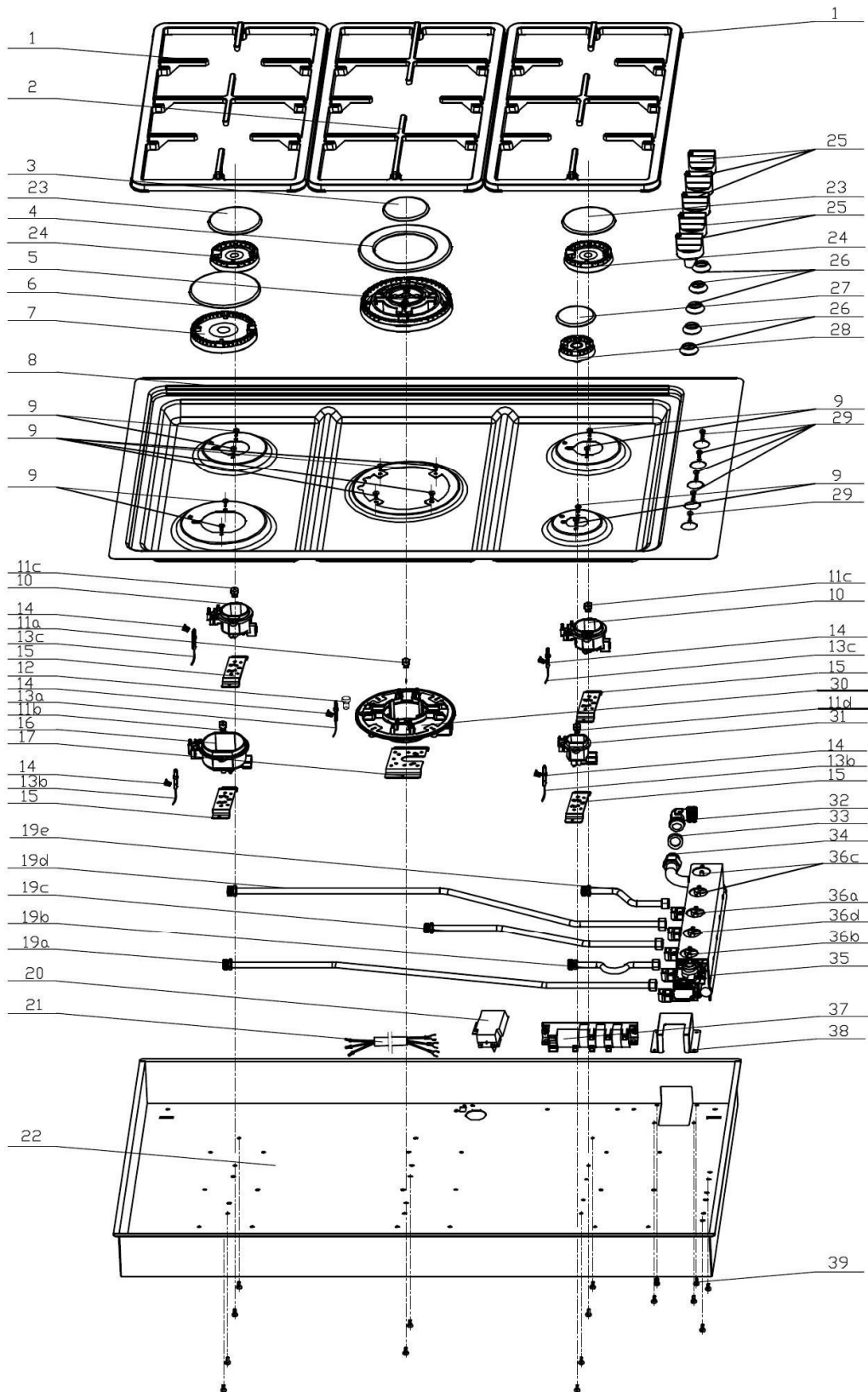




EXPLOSIONADO DE PARTES — PARRILLA A GAS IMPORTADA —

MODELO | WP3550S00

PARRILLA WP3550S00



PARRILLA WP3550S00

No. Ilus.	DESCRIPCIÓN	Cant.	No. de Parte
1	CAST IRON PAN SUPPORT(DOUBLE HOLE)	2	32248051
2	CAST IRON PAN SUPPORT(SINGLE HOLE)	1	32248052
3	328 SUB-LIGHT INTERNAL FIRE COVER	1	32210009
4	328 SUB-LIGHT OUTER FIRE COVER	1	32211009
5	FLAME SPREADER FOR TRIPPLE RING BURNER	1	32220014
6	SUB-LIGHT MIDDLE- FIRE CAP	1	32214006
7	FLAME SPREADER FOR SEMI-RAPID RING BURNER	1	32223002
8	STAINLESS STEEL PANEL	1	32172110
9	CROSS BOLT	4	20106059
10	SEMI RAPID BURNER	2	32202004
11a	328 BIG NOZZLE	1	32192051
11b	RAPID NOZZLE	1	32192010
11c	SEMI-RAPID NOZZLE	2	32192006
11d	AUXILIARY NOZZLE	1	32192013
12	CAULKING FOR THERMOCOUPLE	1	32121005
13a	SPARK PIN	1	32300015
13b	IGNITION	2	32300008
13c	IGNITION	2	32300006
14	SPRING CARD	5	32255008
15	MOUNTING PLATE FOR SEMI-RAPID BURNER	4	32242017
16	RAPID BURNER	1	32203002
17	TRIPPLE RING BURNER	1	32242016
19a	LF950 ALUMINIUM PIPE A WITHOUT SAFETY	1	32163221
19b	PFA850LT ALUMINIUM PIPE B WITHOUT SAFETY	1	32163222
19c	PFA850LT ALUMINIUM PIPE C WITHOUT SAFETY	1	32163223
19d	PFA850T ALUMINIUM PIPE D WITHOUT SAFETY	1	32163224
19e	PFA850T ALUMINIUM PIPE E WITHOUT SAFETY	1	32163225
20	TERMINAL BOX	1	32311015
21	POWER CORD	1	32307090
22	CHASSIS	1	32002089
23	328 SUB-LIGHT SEMI- RAPID FIRE COVER	2	32213006
24	FLAME SPREADER FOR SEMI-RAPID BURNER	2	32222003
25	KNOB NO.K40	5	32244047
26	SWITCH WATERPROOF RING	5	32120012
27	SUB-LIGHT AUXILIARY FIRE COVER	1	32212009
28	FLAME SPREADER FOR AUXILIARY BURNER	1	32221001
29	CROSS BOLT	8	20101002
30	TRIPPLE RING BURNER	1	32200005
31	AUXILIARY BURNER	1	32201001
32	INLET PIPE	1	32243002
33	SEAL WASHER	1	32258016
34	INLET PIPE WITH NUTS	1	32160123
35	PIPE HOLDER	1	32001017
36a	VAVLE WITHOUT SAFETY DEVICE Ø6	1	32110016

PARRILLA WP3550S00

No. Ilus.	DESCRIPCIÓN	Cant.	No. Parte
36b	VAVLE WITHOUT SAFETY DEVICE Ø6	1	32110017
36c	VAVLE WITHOUT SAFETY DEVICE Ø6	1	32110030
36d	VAVLE WITHOUT SAFETY DEVICE Ø6	2	32110031
37	SIX HOLE PULSE	1	32304005
38	COVER BOARD FOR INLET PIPE	1	32011001
39	CROSS BOLT	9	20105004

KIT DE GAS NATURAL

Descripción	Cantidad	No. Parte
Nozzle for rapid burner	1	32191047
Nozzle for semi-rapid burner	2	32191045
Nozzle for auxiliary burner	1	32191046
Nozzle for inner ring burner	1	32190039

HARNESS

Descripción	Cantidad	No. Parte
Power harness 0.75mm	1	30105300016
Harness from micro switch to the pulser 0.75mm	1	30105300033
Harness from micro switch to the power 0.75mm	1	30105300034
Pulser harness 0.75mm	1	30105300029