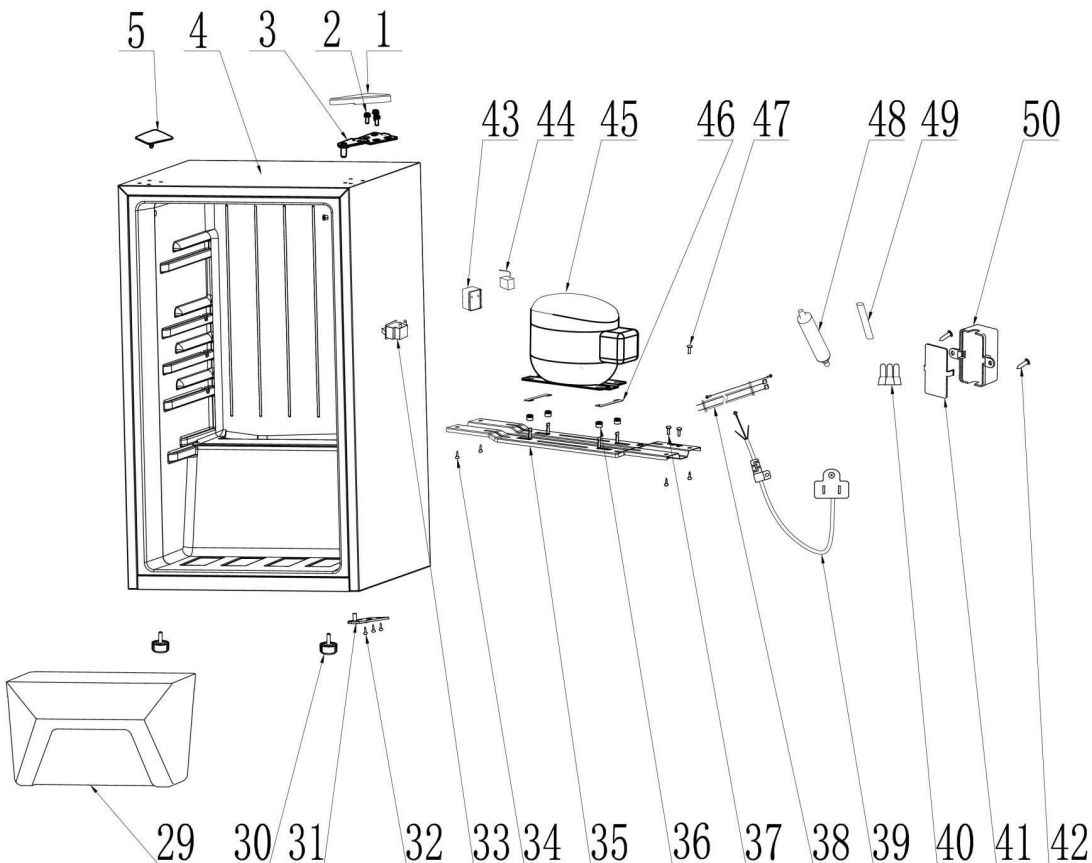


Distribuidor Autorizado

SurteRápido.com

Venta de Refacciones
Electrodomesticas

Refrigerador Whirlpool WS4515BS

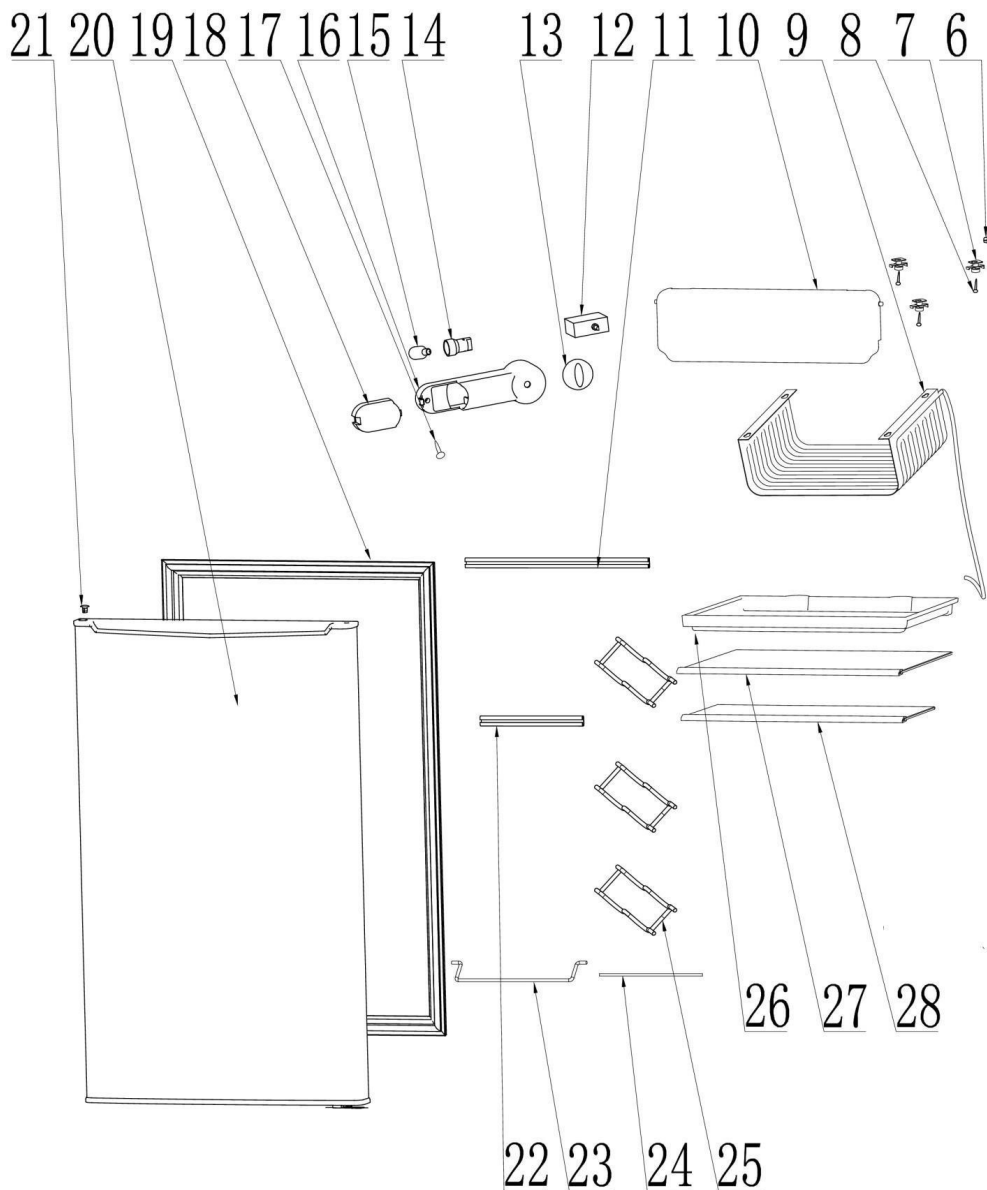


Distribuidor Autorizado

SurteRápido.com

Venta de Refacciones
Electrodomesticas

Refrigerador Whirlpool WS4515BS



Distribuidor Autorizado

SurteRápido.com

Venta de Refacciones
Electrodomesticas

Refrigerador Whirlpool WS4515BS

<u>No. Ilus.</u>	<u>DESCRIPCIÓN</u>	<u>No. de Parte</u>
1	Top hinge cover	228010002440
2	Screw	571000090527
3	Top hinge	208010001676
4	Cabinet foamed assy	208010000024
5	Top hinge screw cap	228010003166
6	Bushing	228010000797
7	Chilling room hanger	228010000785
8	Screw	571000090525
9	Evaporator	298010000001
10	Chilling room cover	228010000779
11	Door hurldc	218010000389
12	Thermostat	258010000062
13	Temperature control knob	228010001987
14	Bulb socket	258010000026
15	Bulb	258010000027
16	Lamp-thermostat socket	228010002845
17	Screw	571000090524
18	Lamp cover	228010001665
19	Door gasket	228010000230
20	Door foamed assy	218010003524
21	Hinge plug	228010003167
22	Door hurldc	218010000391
23	Wire hurdle	218010000390
24	Ring-pull can Hurdle	208010000167
25	Ring-pull can frame	218010000384
26	Water collection plate	228010000130
27	Glass shelf	208010000128

Distribuidor Autorizado

SurteRápido.com

Venta de Refacciones
Electrodomesticas

Refrigerador Whirlpool WS4515BS

No. Ilus.	DESCRIPCIÓN	No. de Parte
28	Vegetable crisper cover	208010000132
29	Vegetable crisper	228010000127
30	Adjustable leg	228010002823
31	Bottom hinge	208010002785
32	Screw	571000090527
33	Light switch	258010000013
34	Screw	571000090525
35	Compressor support plate	218010000326
36	Shock absorber rubber ring	-
37	Screw	571000090525
38	Compressor connecting wire	258010001786
39	Power cable assy	258010001785
40	Terminal cap	598010000113
41	Terminal box lid	228010000055
42	Screw	571000090528
43	Ptc	-
44	Over load protector	-
45	Compressor	288010000206
46	Compressor plate	218010000330
47	Lock nut	571000090526
48	Drier-filter	308010000023
49	Process tube	308010000001
50	Terminal box	228010000603
51	PTC	228010003872
52	Over load protector	228010003874