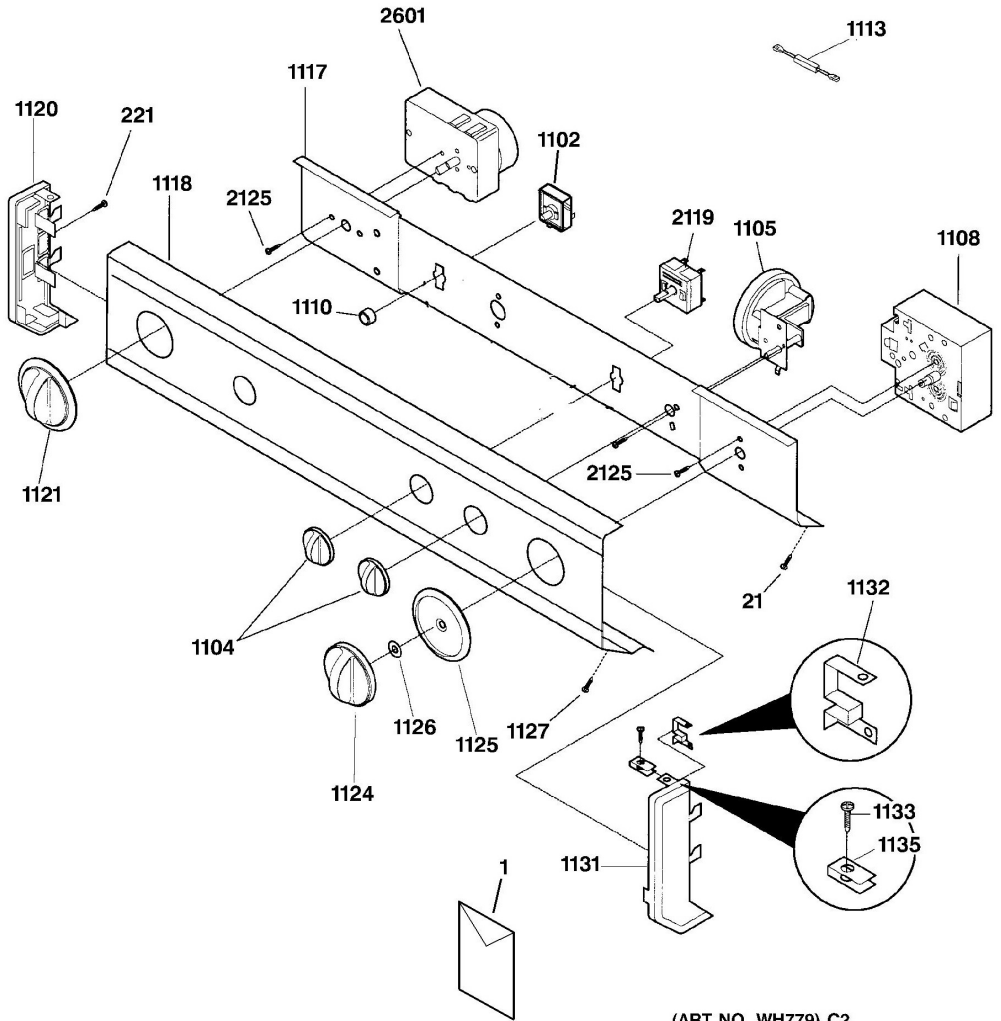


Distribuidor Autorizado

SurteRápido.com

Venta de Refacciones  
Electrodomesticas

C.L. White Westinghouse WSM2780WAWW



(ART NO. WH779) C2

Distribuidor Autorizado

**SurteRápido.com**

Venta de Refacciones  
Electrodomesticas

C.L. White Westinghouse WSM2780WAWW

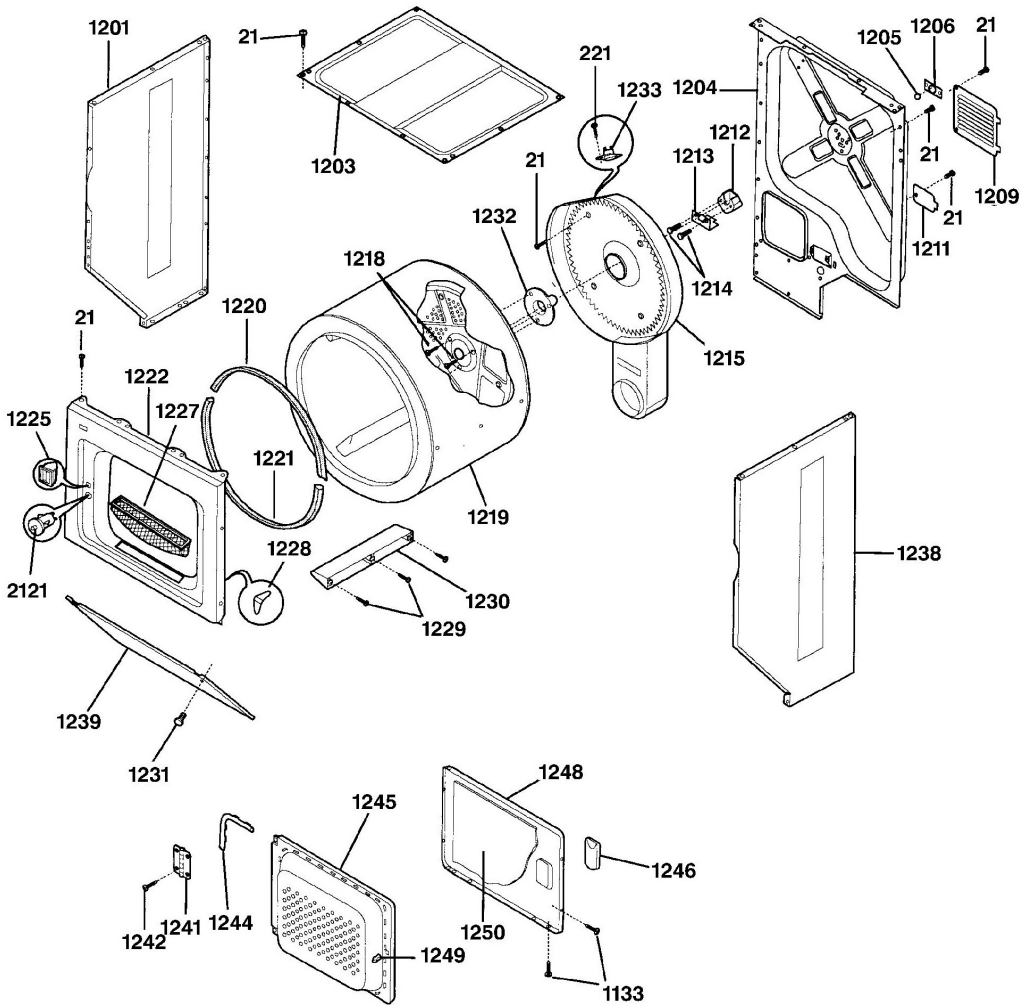
<b>No. Ilus.</b>	<b>DESCRIPCIÓN</b>	<b>No. de Parte</b>
<b>1</b>	MINI MANUAL DRYER	31-15065
<b>1</b>	MINI MANUAL WASHER	31-15066
<b>1</b>	INSTALLATION INSTR.	31-2810
<b>1</b>	MANUAL USE AND CARE	49-9897
<b>21</b>	SCREW	WR02X9494
<b>221</b>	SCREW, 8-18AB X 0.375	WH01X10004
<b>1102</b>	SWITCH START	WE04X10057
<b>1104</b>	KNOB ROTARY WH	WE01X10067
<b>1105</b>	PRESSURE SWITCH	WH12X10083
<b>1108</b>	TIMER WASHER	WH12X1040
<b>1110</b>	BUTTON START SWITCH WH	WE01X10068
<b>1113</b>	RESISTOR,3.0K	WE4X744
<b>1117</b>	BRACKET CONTROL PANEL	WH16X10038
<b>1118</b>	PANEL CONTROL	WH42X10222
<b>1120</b>	END CAP L.H. WH	WH42X10224
<b>1121</b>	KNOB-TIMER DRYER WH	WE01X10069
<b>1123</b>	HARNES-LCD MAIN GAS	WE08X10023
<b>1124</b>	KNOB ASM TIMER WASH WH	WH01X10090
<b>1125</b>	DIAL TIMER WASHER	WH01X10091
<b>1126</b>	SPACER TIMER SHAFT	WH02X1127
<b>1127</b>	SCREW	WH02X1128
<b>1129</b>	HARN-LWR WASHER L/C G.E	WH08X10007
<b>1131</b>	END CAP R.H. WH	WH42X10225
<b>1132</b>	CLIP GROUNDING	WH02X1129
<b>1133</b>	SCREW, 8-18 AB X .44	WH02X10038
<b>1135</b>	CLIP END CAP	WH02X1131
<b>1563</b>	SCREW KICKPLATE	WR01X2209
<b>2119</b>	SWITCH TEMP	WH12X10036
<b>2125</b>	SCREW 8-32 X .250	WH02X1150
<b>2601</b>	TIMER DRYER	WE04X10005

Distribuidor Autorizado

SurteRápido.com

Venta de Refacciones  
Electrodomesticas

C.L. White Westinghouse WSM2780WAWW



(ART NO. WH780) C2

Distribuidor Autorizado

**SurteRápido.com**

Venta de Refacciones  
Electrodomesticas

C.L. White Westinghouse WSM2780WAWW

<b>No. Ilus.</b>	<b>DESCRIPCIÓN</b>	<b>No. de Parte</b>
<b>21</b>	SCREW	WR02X9494
<b>221</b>	SCREW, 8-18AB X 0.375	WH01X10004
<b>1133</b>	SCREW, 8-18 AB X .44	WH02X10038
<b>1201</b>	PANEL SIDE DRYER L.H. WH	WE20X0766
<b>1203</b>	PANEL TOP	WE20X0741
<b>1204</b>	PANEL REAR	WE20X10015
<b>1205</b>	BALL	WE01X1152
<b>1206</b>	CLIP BALL	WE02X0358
<b>1209</b>	PANEL ACCESS DRYER	WE20X0743
<b>1211</b>	COVER TERM BLOCK	WE20X0744
<b>1212</b>	BEARING-DRUM SUPPORT	WE03X10002
<b>1213</b>	BRACKET BEARING	WE13X10009
<b>1214</b>	SCREW, 10-16B X 1.375	WE02X10005
<b>1215</b>	HEATER & HSNG ASM	WE14X0201
<b>1218</b>	SCREW 10-16 X.375	WE02X10006
<b>1219</b>	ASSY-DRUM	WE21X10007
<b>1220</b>	GLIDE-DRUM	WE03X0073
<b>1221</b>	SEAL BASKET LOWER	WE09X0105
<b>1222</b>	PANEL FRONT WH	WE20X10006
<b>1225</b>	CATCH DOOR	WE01X10023
<b>1227</b>	LINT TRAP	WE18X10003
<b>1228</b>	CLIP-GUIDE	WE02X0361
<b>1229</b>	SCREW, 10-14 X 1.00	WE02X10007
<b>1230</b>	VANE	WE21X0069
<b>1231</b>	SCREW 10-16 X 5/8 PPH AB	WE02X10002
<b>1232</b>	SHAFT SUPPORT	WE13X10011
<b>1233</b>	THERMOSTAT SAFETY	WE04X10040

Distribuidor Autorizado

**SurteRápido.com**

Venta de Refacciones  
Electrodomesticas

C.L. White Westinghouse WSM2780WAWW

<b><u>No. Ilus.</u></b>	<b><u>DESCRIPCIÓN</u></b>	<b><u>No. de Parte</u></b>
<b>1238</b>	PANEL SIDE RIGHT WH	WE20X0768
<b>1239</b>	PANEL ACCESS WH	WE20X0772
<b>1241</b>	HINGE DOOR	WE01X10012
<b>1244</b>	GASKET DOOR	WE09X0107
<b>1245</b>	DOOR INNER WH	WE10X10004
<b>1246</b>	DOOR HANDLE WH	WE01X10050
<b>1248</b>	DOOR-OUTER WH	WE10X10009
<b>1249</b>	STRIKE DOOR	WE01X1158
<b>1250</b>	INSULATOR HEAT SHEILD	WE10X0322
<b>2121</b>	DOOR SWITCH	WE04X10003



Distribuidor Autorizado

**SurteRápido.com**

Venta de Refacciones  
Electrodomesticas

C.L. White Westinghouse WSM2780WAWW

<b>No. Ilus.</b>	<b>DESCRIPCIÓN</b>	<b>No. de Parte</b>
<b>21</b>	SCREW	WR02X9494
<b>221</b>	SCREW, 8-18AB X 0.375	WH01X10004
<b>1243</b>	SCREW, 8-18 AB X.44	WE02X10020
<b>1301</b>	SEAL AIR DUCT	WE09X10001
<b>1302</b>	FASTENER	WE01X1262
<b>1306</b>	AIR DUCT ASM	WE14X10019
<b>1309</b>	HEAT SHIELD HEAT	WH16X10040
<b>1310</b>	FRONT BLOWER HOUSING	WE14X10020
<b>1312</b>	BLOWER WHEEL	WE16X0028
<b>1314</b>	HEATER THERMOSTAT	WE04X10041
<b>1315</b>	THERMOSTAT CONTROL	WE04X0747
<b>1317</b>	REAR BLOWER HOUSING	WE14X10004
<b>1318</b>	CRADLE MOTOR	WE13X0211
<b>1319</b>	PAN MOTOR CRADLE UPPER	WE13X0210
<b>1322</b>	SPRING IDLER	WE01X1159
<b>1323</b>	ASMY-IDLER & PULLEY	WE01X10077
<b>1325</b>	BELT DRYER	WE12X0090
<b>1327</b>	CLAMP MOTOR	WE01X10003
<b>1328</b>	MOTOR, SWITCH, PULLEY ASM	WE17X0054
<b>1334</b>	SHIELD ACCESS	WE01X10072
<b>1338</b>	ELBOW EXHAUST	WE14X0206
<b>1342</b>	BRACKET INTERIOR JOINT	WE13X0188
<b>1344</b>	BRACKET EXTERIOR	WE13X0189
<b>1348</b>	PAN BOTTOM	WE13X10012
<b>1350</b>	COVER SAFETY	WE20X0753
<b>1353</b>	CLAMP HOSE	WH01X10048
<b>1361</b>	BRACKET VALVE	WE13X0191

Distribuidor Autorizado

**SurteRápido.com**

Venta de Refacciones  
Electrodomesticas

C.L. White Westinghouse WSM2780WAWW

<b>No. Ilus.</b>	<b>DESCRIPCIÓN</b>	<b>No. de Parte</b>
<b>1364</b>	PIPE GAS	WE01X1163
<b>1367</b>	VALVE GAS SHUT- OFF	WE01X10007
<b>1368</b>	TAIL PIECE GAS VALVE	WE01X1166
<b>1369</b>	NUT UNION GAS VALVE	WE02X0371
<b>1370</b>	GAS VALVE ASM	WE14X0207
<b>1371</b>	COIL SECONDARY	WE04X0748
<b>1372</b>	COIL BOOSTER	WE04X10004
<b>1373</b>	ORIFICE NATURAL GAS	WE01X1167
<b>1373</b>	GAS CONV KIT NAT TO LP	WE25X0206
<b>1373</b>	LP TO NAT CONVERSION KIT	WE25X0207
<b>1374</b>	IGNITOR ASM	WE04X0750
<b>1376</b>	CLIP IGNITER	WE02X10023
<b>1377</b>	BURNER ASM	WE01X10051
<b>1379</b>	SENSOR	WE04X0751
<b>1380</b>	TUBE BURNER	WE14X10024
<b>1414</b>	BLOCK-SUPPORT	WH01X2622
<b>2574</b>	SCREW-SW 6032X.19-2A	WH02X10004
<b>2621</b>	SCW #8 PAN HD 10-10BX.50	WH02X10007
<b>2761</b>	POWER CORD	WE08X0044

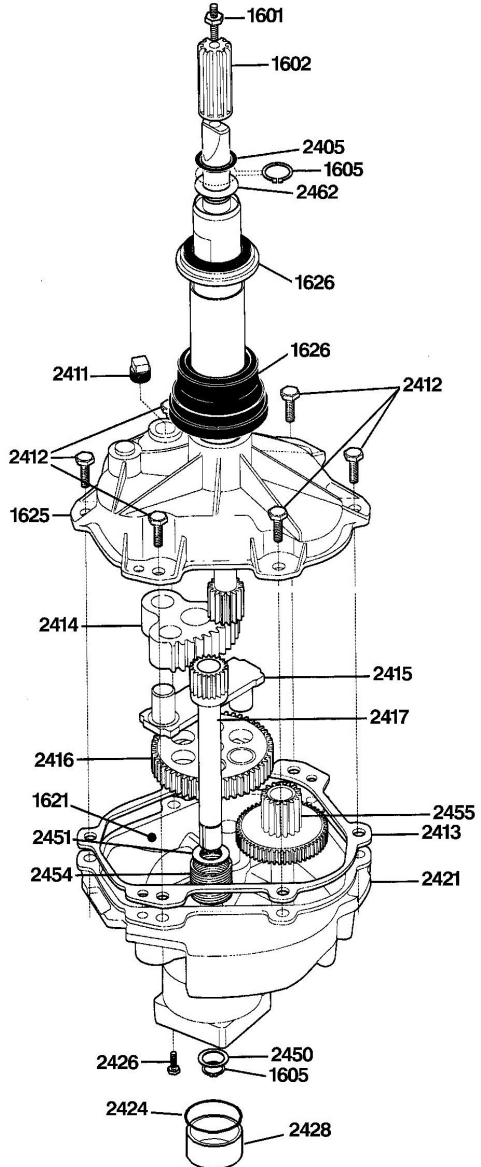
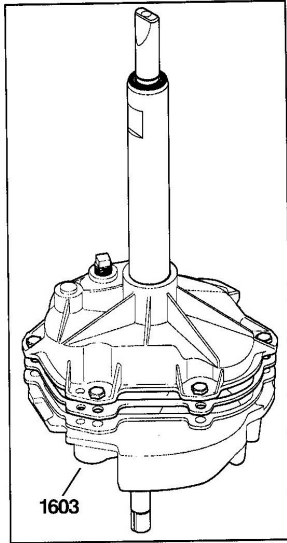


Distribuidor Autorizado

SurteRápido.com

Venta de Refacciones  
Electrodomesticas

C.L. White Westinghouse WSM2780WAWW



(ART NO. WH764) C2

Distribuidor Autorizado

**SurteRápido.com**

Venta de Refacciones  
Electrodomesticas

C.L. White Westinghouse WSM2780WAWW

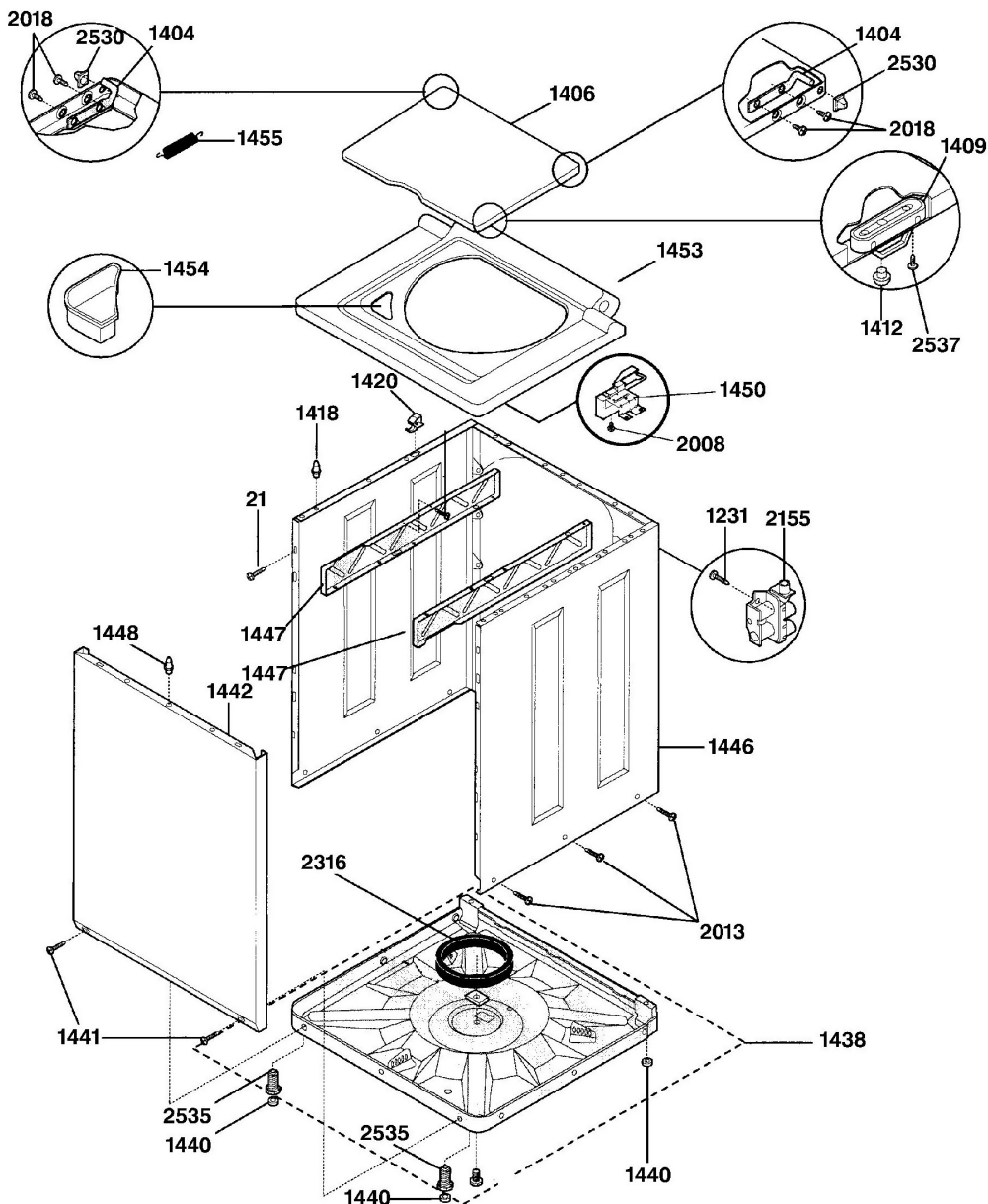
<b>No. Ilus.</b>	<b>DESCRIPCIÓN</b>	<b>No. de Parte</b>
1601	CAP STUD	WH02X10039
1602	DRIVE HUB	WH40X10001
1603	TRANSMISSION COMPLETE	WH38X10008
1605	RING RETAINING	WH02X1136
1621	OIL TRANSMISSION 1 QT.	WH60X10003
1625	HOUSING ASM UPPER & SHAF	WH37X10002
1626	SEAL ASM TUB	WH08X10004
2405	UPPER LIP SEAL	WH08X0364
2411	PIPE PLUG	WH01X2320
2412	SCREW 5/16-18 X 1	WH01X10104
2413	GASKET	WH08X0365
2414	SECTOR GEAR	WH05X0240
2415	CONNECTING ROD	WH40X10002
2416	CRANK GEAR	WH05X0241
2417	LOWER SHAFT ASM	WH40X0183
2421	LOWER HSG ASM	WH39X10001
2424	WASHER	WH02X10086
2426	SCREW 10-16X3/8	WH02X10040
2428	SPACER	WH01X10094
2450	SPACER WASHER	WH02X1031
2451	THRUST WASHER	WH02X1016
2454	SMALL L G S SPRING	WH01X2324
2455	IDLER GEAR	WH05X0242
2462	THRUST WASHER	WH02X1032

Distribuidor Autorizado

SurteRápido.com

Venta de Refacciones  
Electrodomesticas

C.L. White Westinghouse WSM2780WAWW



(ART NO. WH782) C2

Distribuidor Autorizado

**SurteRápido.com**

Venta de Refacciones  
Electrodomesticas

C.L. White Westinghouse WSM2780WAWW

<b>No. Ilus.</b>	<b>DESCRIPCIÓN</b>	<b>No. de Parte</b>
<b>21</b>	SCREW	WR02X9494
<b>1231</b>	SCREW 10-16 X 5/8 PPH AB	WE02X10002
<b>1404</b>	BAR HINGE	WH01X2600
<b>1406</b>	LID WASHER WH	WH44X1137
<b>1409</b>	STRIKE LID	WH01X10041
<b>1412</b>	BUMPER LID	WH01X2604
<b>1418</b>	PIN-LOCATING	WH01X10013
<b>1418</b>	PIN LOCATING	WH01X10042
<b>1438</b>	BASE ASSEMBLY	WH46X10025
<b>1440</b>	PAD LEVEL LEG FRONT	WH01X10043
<b>1440</b>	PAD LEVEL LEG REAR	WH01X10044
<b>1441</b>	SCREW 8-18X5/8	NOT STOCKD
<b>1447</b>	BRACKET-MARRIAGE RH	WH16X0501
<b>1447</b>	BRACKET-MARRIAGE LH	WH16X0502
<b>1450</b>	LID LOCK	WH12X10084
<b>1453</b>	PANEL TOP WH	WH46X10026
<b>1454</b>	DISPENSER BLEACH	WH47X0041
<b>1455</b>	SPRING ASSIST	WH01X2623
<b>2008</b>	SCREW 8-32 X 3/8	WE02X10016
<b>2013</b>	SCREW 1/4-14 X 5/8	WE02X10003
<b>2018</b>	SCR 6-32X.312	WH02X10060
<b>2155</b>	WATER VALVE	WH13X10002
<b>2316</b>	SNUBBER RING	WH01X2312
<b>2530</b>	GROMMET	WH01X2592
<b>2535</b>	LEVELING LEG	WH01X10049
<b>2537</b>	SCREW 6-20 X 3/8	WH02X1126



Distribuidor Autorizado

**SurteRápido.com**

Venta de Refacciones  
Electrodomesticas

C.L. White Westinghouse WSM2780WAWW

<b>No. Ilus.</b>	<b>DESCRIPCIÓN</b>	<b>No. de Parte</b>
790	CLAMP HOSE	WH01X2036
1353	CLAMP HOSE	WH01X10048
1441	SCREW 8-18X5/8	NOT STOCKD
1501	CAP AGITATOR	WH43X0118
1502	SEAL AGITATOR CAP	WH08X0368
1503	COVER TUB	WH45X0150
1510	NOZZLE & HOSE ASM	WH41X10039
1511	AGITATOR	WH43X10013
1512	TUB SPIN	WH45X10017
1518	TUB & BEARING ASM	WH45X10018
1519	BEARING UPPER SPIN	WH04X0104
1520	SCREW 8-12 X 3/4 PPH B	WH01X10100
1522	LEG DOME ASM	WH01X2720
1523	SPRING VERTICAL (BLUE)	WH01X2624
1524	SPRING HORIZONTAL	WH01X2718
1528	BELT	WH07X10002
1529	PULLEY TRANSMISSION	WH07X0123
1530	IDLER PULLEY ASM	WH07X0115
1531	PULLEY MOTOR	WH07X0116
1532	ROLL PIN	WH01X2615
1533	SPRING TORSION	WH01X2616
1534	SLEEVE IDLER PIVOT	WH01X10045
1535	RING-RETAINING	WH02X1132
1536	WASHER PIVOT SHAFT	WH02X1133
1537	WASHER SPRING	WH02X1094
1538	HEX NUT	WH01X10101
1539	SPRING-VERTICAL	WH01X2625
1540	MOTOR	WH20X10007

Distribuidor Autorizado

**SurteRápido.com**

Venta de Refacciones  
Electrodomesticas

C.L. White Westinghouse WSM2780WAWW

<b>No. Ilus.</b>	<b>DESCRIPCIÓN</b>	<b>No. de Parte</b>
<b>1541</b>	SHIELD WASHER MOTOR	WH16X10026
<b>1543</b>	PUMP, DRAIN	WH23X10009
<b>1549</b>	HOSE PUMP TO TUB	WH41X10027
<b>1551</b>	SCR 5/16-18X.875 HXW	WH01X10102
<b>1552</b>	WASHER	WH01X10103
<b>1558</b>	SCREW, PUMP BRKT	WE02X10004
<b>1559</b>	CLIP	WH02X1143
<b>2048</b>	CAPACITOR	WH12X1039
<b>2126</b>	HOSE ASM INTAKE	WH41X0058
<b>2127</b>	HOSE WASHER	WH02X10041
<b>2169</b>	FASTENER-RATCHET	WH02X10061
<b>2244</b>	RING DRAIN HOSE	WH01X10063
<b>2304</b>	SCREW	WH02X1142
<b>2309</b>	LOCK PLATE	WH01X2549
<b>2310</b>	TRUNNION	WH17X10004
<b>2337</b>	THRUST WASHER	WH02X1009
<b>2348</b>	CLAMP-PUMP	WH02X10031
<b>2350</b>	SCREW 5/16-18 X 1 5/8 HX	WH02X1107
<b>2434</b>	SLEEVE IDLER	WH02X1111
<b>2560</b>	HOSE-DRIAN, 90"	WH41X0378
<b>2621</b>	SCW #8 PAN HD 10-10BX.50	WH02X10007
<b>2747</b>	PRESSURE TUBE	WH41X10038