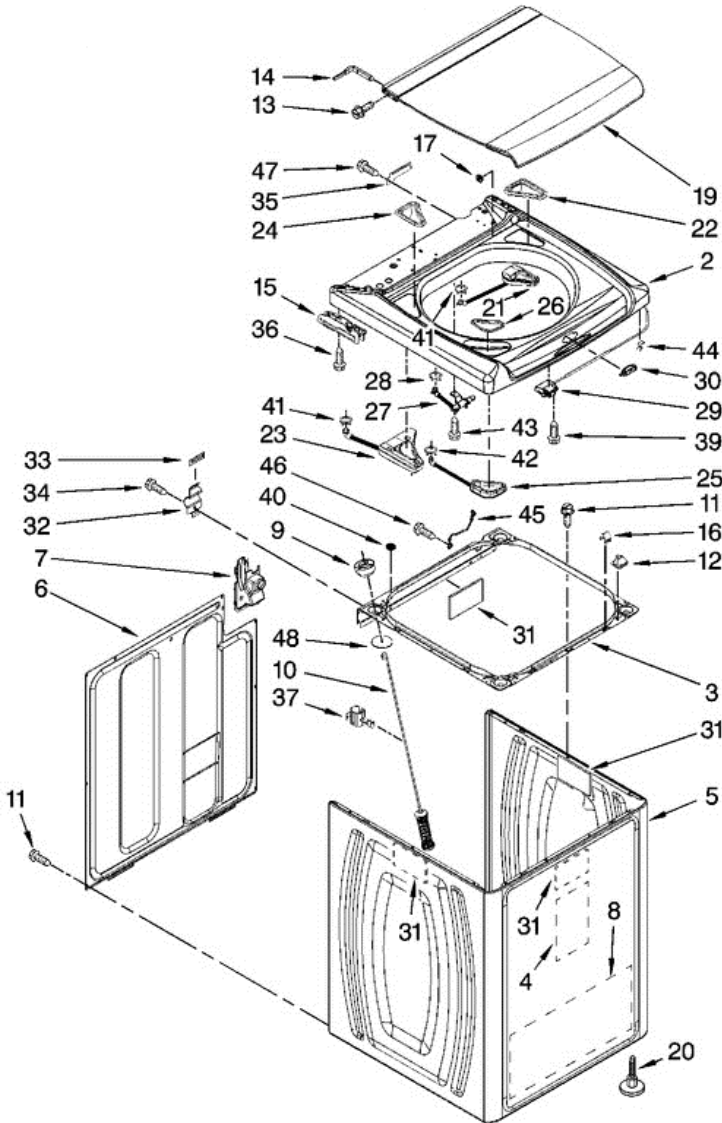


**WTW6600SW0 GABINETE**





**WTW6600SW0 GABINETE**

2	8565311	TOP (WHITE)
2	8565312	TOP (BISCUIT)
2	W10053420	TOP (BLACK)
3	8576639	FRAME ASSEMBLY, CABINET TOP (INCLUDES 31)
4	8576784	SOUND ABSORBER, CABINET
5	8566156	CABINET (WHITE)
5	8566157	CABINET (BISCUIT)
5	W10050330	CABINET (BLACK)
6	8566090	PANEL, REAR
7	8543781	RETAINER, DRAIN HOSE STORAGE
8	8578225	SOUND ABSORBER, CABINET
9	8576475	BALL, SUSPENSION (4)
10	8564009	DAMPER ASSEMBLY, TUB SUSPENSION (SET OF 4)
11	1157158	SCREW, 8-18 X 3/8
12	8563602	LOCATOR, TOP (2)
13	W10078270	SCREW, LID HINGE MOUNTING (4)
14	8563965	HINGE WIRE (2) (L.H.)
14	8572974	HINGE WIRE (2) (R.H.)
15	8563962	HINGE, SPRING ASSEMBLY (GLASS LID) (LEFT)
15	8563963	HINGE, SPRING ASSEMBLY (GLASS LID) (RIGHT)
16	8563785	LOCK, TOP- FRONT (2)
17	W10052730	BEARING, LID HINGE (2)
19	8565267	LID, GLASS ASSEMBLY (BRILLIANT WHITE ALUMINUM)
19	8576485	LID, GLASS ASSEMBLY (GOLD DUST)
19	W10071520	LID, GLASS ASSEMBLY (BLACK)
20	8578826	FOOT ASSEMBLY, LEVELING (4)
21	W10052670	DISPENSER, FABRIC SOFTENER (BISCUIT)
21	W10052680	DISPENSER, FABRIC SOFTENER (ELEPHANT)
21	W10059150	DISPENSER, FABRIC SOFTENER (WHITE)
22	8566210	BEZEL, FABRIC SOFTENER DISPENSER (WHITE)
22	8580016	BEZEL, FABRIC SOFTENER DISPENSER (BISCUIT)
22	8580017	BEZEL, FABRIC SOFTENER DISPENSER (ELEPHANT)
23	W10052690	DISPENSER, BLEACH (BISCUIT)

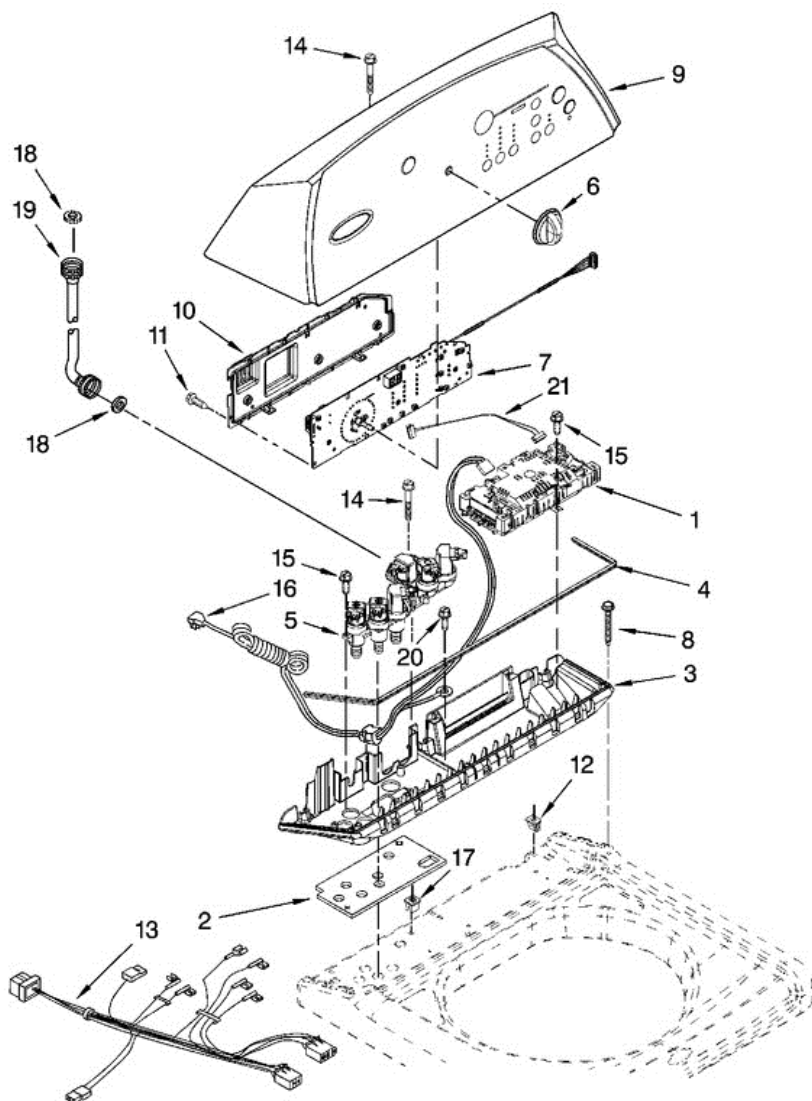
23	W10052700	DISPENSER, BLEACH (ELEPHANT)
23	W10059160	DISPENSER, BLEACH (WHITE)
24	8566211	BEZEL, BLEACH DISPENSER (WHITE)
24	8580018	BEZEL, BLEACH DISPENSER (BISCUIT)
24	8580019	BEZEL, BLEACH DISPENSER (ELEPHANT)
25	8564976	DISPENSER, DETERGENT (WHITE)
25	W10059170	DISPENSER, DETERGENT (BISCUIT)
25	W10059180	DISPENSER, DETERGENT (ELEPHANT)
26	8564979	BEZEL, DETERGENT DISPENSER (WHITE)
26	W10045190	BEZEL, DETERGENT DISPENSER (BISCUIT)
26	W10045210	BEZEL, DETERGENT DISPENSER (ELEPHANT)
27	8543779	NOZZLE ASSEMBLY, FRESH WATER
28	371503	CLAMP, HOSE
29	W10059230	LOCK ASSEMBLY, LID
30	8563939	BEZEL, LID LOCK (BISCUIT)
30	8572019	BEZEL, LID LOCK (WHITE)
30	W10052520	BEZEL, LID LOCK (BLACK)
31	8564458	ABSORBER, IMPACT
32	8564456	HINGE, TOP (2)
33	18849	PAD, TOP HINGE (2)
34	343641	SCREW, 10-16 X 1/2 (2)
35	8563941	COVER, HARNESS
36	693995	SCREW, 8-18 X 3/8
37	8543784	BRACKET, DRAIN HOSE
39	8281136	SCREW, 10-16 X 3/4
40	8576476	SPACER, REAR (CABINET/TOP)
41	370451	CLAMP, HOSE
42	371503	CLAMP, HOSE
43	3400061	SCREW, 10-16 X 9/16
44	90016	CLIP, HARNESS (4)
45	8281736	WIRE, GROUND JUMPER
46	3400076	SCREW, 10-32 X 5/8
47	3390647	SCREW, 8-18 X 1/2
48	8577896	WASHER, SUSPENSION UMBRELLA

Distribuidor Autorizado

**SurteRápido.com**

Venta de Refacciones  
Electrodomesticas

## WTW6600SW0 TABLERO

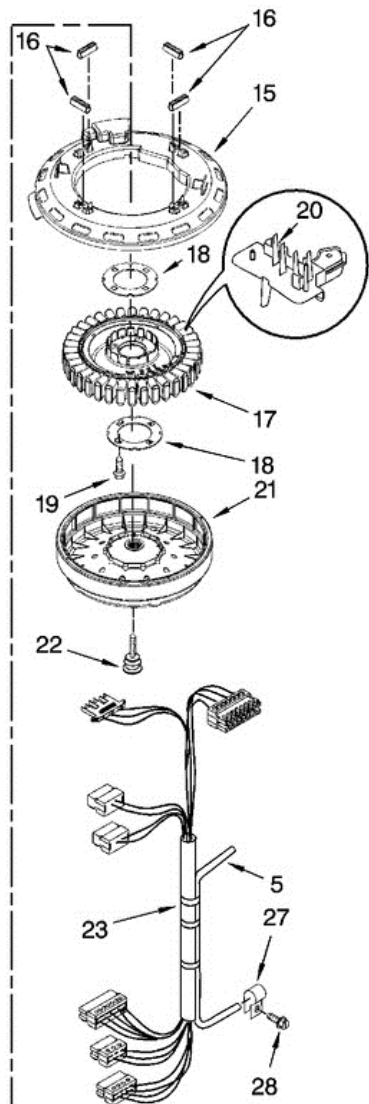
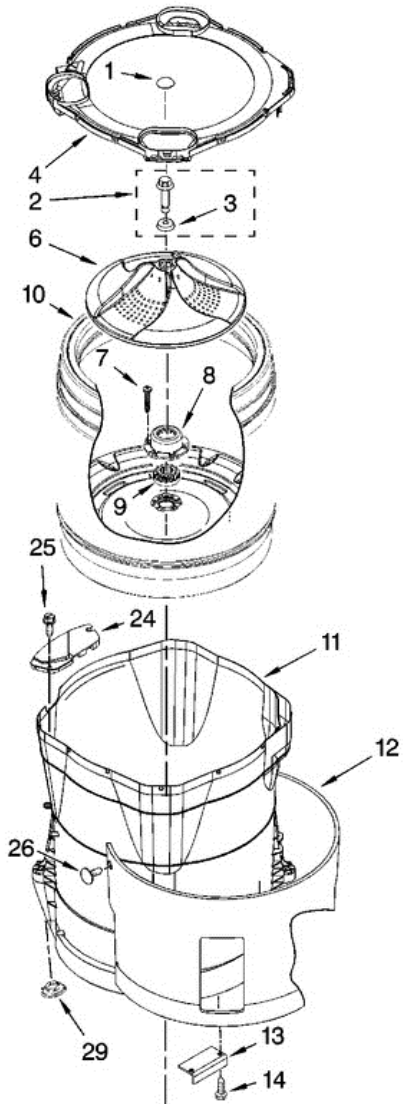




## WTW6600SW0 TABLERO

1	W10104830	CONTROL UNIT ASSEMBLY, MACHINE & MOTOR
2	8565260	GASKET, VALVE TRAY
3	8565304	TRAY ASSEMBLY, CONSOLE (INCL. 2 & 4) (WHITE)
3	8565305	TRAY ASSEMBLY, CONSOLE (INCL. 2 & 4) (BLACK)
3	8565306	TRAY ASSEMBLY, CONSOLE (INCL. 2 & 4) (BISCUIT)
4	8565259	GASKET, CONSOLE/TRAY
5	W10059320	VALVE, LOG ASSEMBLY
6	8574885	KNOB, CONTROL (WHITE)
6	8580118	KNOB, CONTROL (BLACK)
6	8580119	KNOB, CONTROL (BISCUIT)
7	8564290	USER INTERFACE
8	W10004990	SCREW, 6-20 X 1.2
9	W10070060	CONSOLE (WHITE)
9	W10070070	CONSOLE (BISCUIT)
9	W10070080	CONSOLE (BLACK)
10	8564265	COVER, REAR- USER INTERFACE
11	W10003770	SCREW, 6-19 X 1/2 (3)
12	W10022060	NUT, PUSH-IN (3)
13	W10045100	HARNESS, UPPER
14	8565324	SCREW, 10-16 X 1.75
15	8281136	SCREW, 8-18 X 3/4
16	3407203	CORD ASSEMBLY, POWER
17	98460	NUT, PUSH-IN (2)
18	3976300	WASHER, WATER INLET HOSE (1-1/16 X 5/8) (4)
19	8571377	HOSE, WATER INLET (BLUE COUPLER)
19	8571378	HOSE, WATER INLET (RED COUPLER)
20	488649	SCREW, POWER CORD GROUND
21	3407187	HARNESS, THERMISTOR

**WTW6600SW0 TINAS**

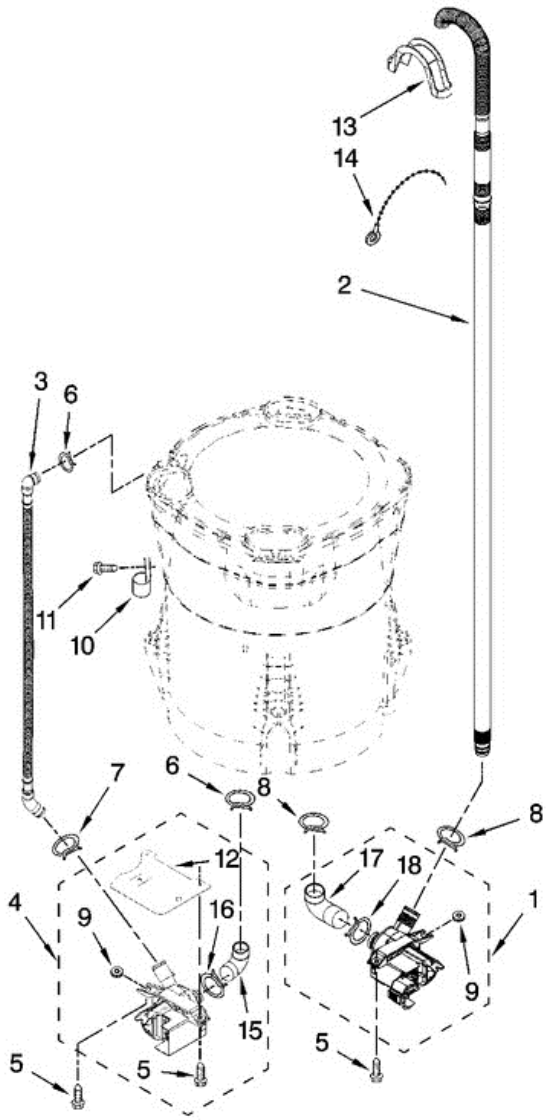




## WTW6600SW0 TINAS

1	8578929	CAP, IMPELLER
2	W10076270	SCREW & WASHER ASSEMBLY
3	W10076260	WASHER
4	8542666	TUB RING
5	8572540	HOSE, PRESSURE SWITCH
6	W10076230	IMPELLER (WASHPLATE)
7	8533953	SCREW, 8-16 X 1.000 (6)
8	8545948	HUB, BASKET-DRIVEN (INCLUDES ITEM 9)
9	8545953	HUB, BASKET DRIVER (INCLUDES ITEM 8)
10	8557267	BASKET ASSEMBLY (INCLUDES ITEMS 7, 8, & 9)
11	8572660	TUB & DRIVE SHAFT ASSEMBLY
12	8546680	WRAP, TUB
13	8542674	WEIGHT, TUB COUNTERBALANCE
14	W10004910	SCREW, 12-16 X 1-1/4 (2)
15	8557839	SHIELD, DRIVE MOTOR (INCLUDES ITEM 16)
16	8565172	TUBE, BUFFER (SET OF 4)
17	8565170	STATOR, MOTOR (INCLUDES ITEM 18)
18	8557836	PLATE, STATOR (SET OF 2)
19	W10076010	SCREW, 1/4-20 X .968 (4)
20	8565188	RPS ASSEMBLY
21	8565177	ROTOR, MAIN DRIVE MOTOR (INCLUDES ITEM 22)
22	****	BOLT, ROTOR ASSEMBLY NON-SERVICEABLE
23	W10058730	HARNESS, LOWER (INCLUDES ITEM 5)
24	8566197	FILTER, DUAL PUMP HOOD
25	8533928	SCREW, 8-18 X 3/4 (2)
26	8533987	RETAINER, PUSH-IN
27	W10005430	CLAMP, PRESSURE HOSE RETAINER
28	8533957	SCREW, 10-16 X 1/2
29	8564017	CUP, SUSPENSION (4)

**WTW6600SW0 BOMBA**







**WTW6600SW0 BOMBA**

1	W10049390	PUMP ASSEMBLY, DRAIN
2	8571715	HOSE, DRAIN
3	8543774	HOSE, RECIRC
4	8578573	PUMP ASSEMBLY, RECIRC
5	8534063	SCREW, 10-14 X 1.000
6	370449	CLAMP, HOSE
7	8269146	CLAMP, HOSE
8	8317496	CLAMP, HOSE
9	8182771	GROMMET, PUMP MOUNTING (4)
10	8534021	CLAMP, RECIRC HOSE RETAINER
11	8533943	SCREW, 10-16 X 3/4
12	8578572	SHIELD, RECIRC PUMP
13	8576642	RETAINER, DRAIN HOSE
14	3347868	CABLE TIE
15	8182769	HOSE, RECIRC PUMP
16	8182770	CLAMP, RECIRC PUMP HOSE
17	8182767	HOSE, DRAIN PUMP
18	8182768	CLAMP, DRAIN PUMP HOSE