

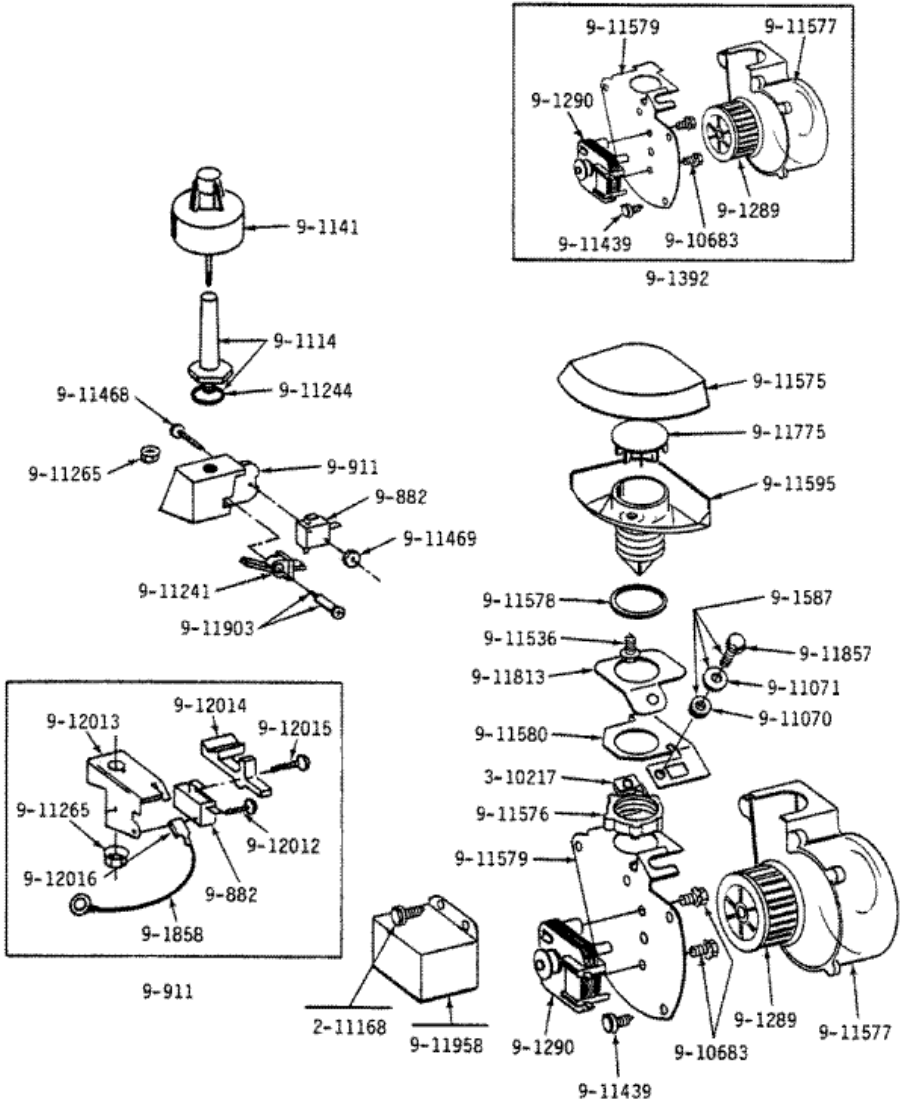
Distribuidor Autorizado

SurteRápido.com

Venta de Refacciones
Electrodomesticas



WU701 BLOWER/AIR INLET & WATER LEVEL FLOAT





WU701 BLOWER/AIR INLET & WATER LEVEL FLOAT

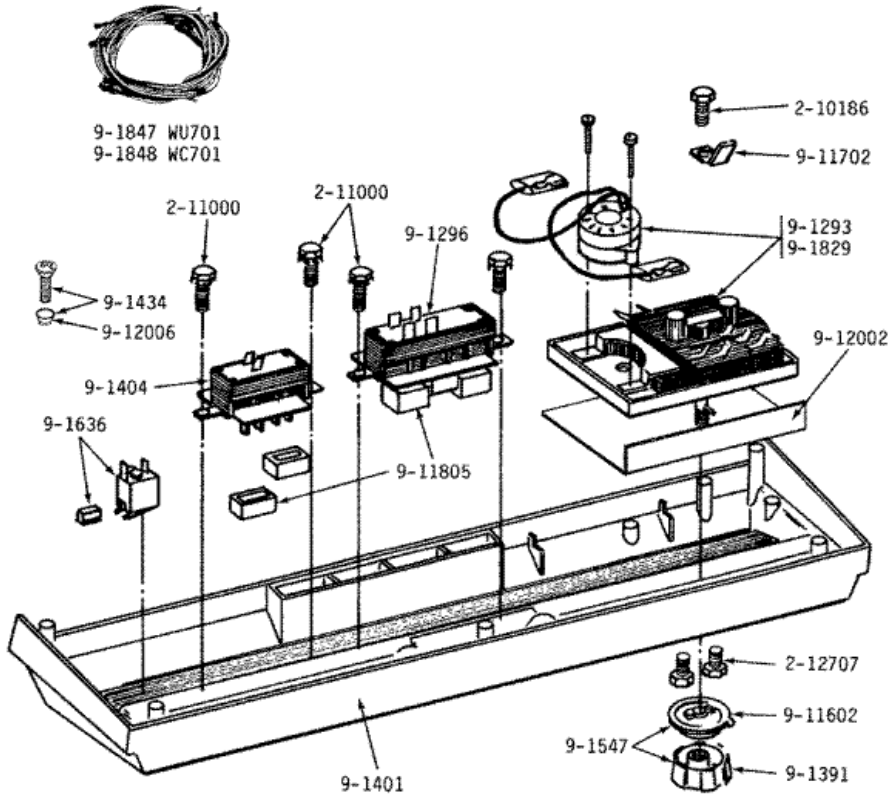
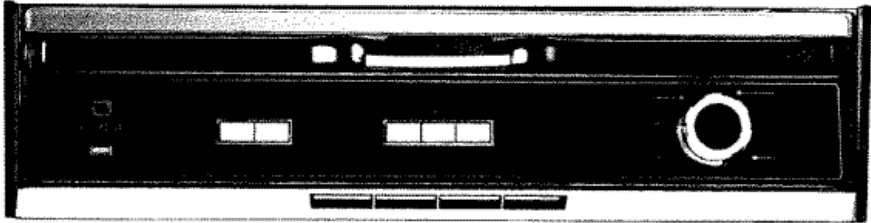
2	310217	NO LONGER AVAILABLE (S/P)
3	900882	SWITCH, WATER LEVEL (S/P)
4	900911	FLOAT SWITCH & BRACKET ASSM (S/P)
5	901114	FLOAT GUIDE WITH GASKET (S/P)
6	901141	FLOAT (S/P)
7	901289	BLOWER WHEEL (S/P)
8	901290	BLOWER MOTOR (S/P)
9	901392	BLOWER ASSEMBLY (S/P)
10	901587	SCREW AND WASHERS ASSEMBLY (S/P)
11	901858	GROUND WIRE (S/P)
13	911070	RUBBER WASHER (S/P)
14	911071	DOMED WASHER (S/P)
15	911241	ACTUATOR LEVER (S/P)
16	911244	GASKET (S/P)
17	911265	PALNUT, FLOAT (S/P)
20	911469	NUT (S/P)
21	911536	SCREW (S/P)
22	911575	AIR INLET CAP (S/P)
23	911576	NUT, AIR INLET (S/P)
24	911577	BLOWER HOUSING (S/P)
25	911578	GASKET (S/P)
26	911579	BLOWER BRACKET (S/P)
27	911579	BLOWER BRACKET (S/P)
28	911580	BLOWER SUPPORT (S/P)
29	911595	AIR INLET (S/P)
30	911775	BLOWER VALVE (S/P)
31	911813	PAD, BLOWER SUPPORT (S/P)
33	911903	PIVOT PIN FOR ACTUATOR LEVE (S/P)
34	911958	BLOWER MOTOR COVER-CANADA (S/P)
36	912013	MOUNTING PLATE (S/P)
37	912014	LEVER, ACTUATOR (S/P)
38	912015	PIN, LEVER PIVOT (S/P)
39	912016	RECEPTACLE (S/P)

Distribuidor Autorizado

SurteRápido.com

Venta de Refacciones
Electrodomesticas

WU701 CONTROL PANEL & COMPONENTS





WU701 CONTROL PANEL & COMPONENTS

1	210186	DESCONTINUADO
2	211000	SCREW, HEX HEAD (BRAKE DRUM) (S/P)
3	212707	SCREW (S/P)
4	901293	TIMER (S/P)
5	901296	CONTROL SWITCH, 3 BUTTON (S/P)
6	901391	TIMER KNOB WITH INSERT (S/P)
7	901401	CONTROL PANEL WITH INSERTS (S/P)
8	901404	CONTROL SWITCH, 2 BUTTON (S/P)
9	901434	SCREW AND WASHER ASSEMBLY (S/P)
10	901547	TIMER KNOB AND DIAL-CHROME (S/P)
11	901636	INDICATOR LAMP (S/P)
12	901829	TIMER MOTOR (S/P)
15	911602	TIMER INDICATOR DIAL-CHROME (S/P)
16	911702	GROUND RECEPTACLE (S/P)
17	911805	BUTTON FOR SWITCH (S/P)
18	912002	BARRIER FOR TIMER (S/P)
19	912006	WASHER (S/P)

Distribuidor Autorizado

SurteRápido.com

Venta de Refacciones Electrodomesticas

WU701 CONVERSION KIT (WC701)



9-11050

9-11425



9-11401



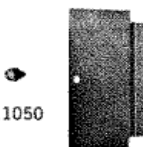
9-1107



9-1298
9-852
9-853



9-11856



9-11050

9-11426

FOR SUPPLY CONNECTIONS
USE WIRING SUITABLE FOR
AT LEAST 75°C (167°F)
ROUTE WIRING THROUGH
CLIP ON BOTTOM OF TUB

⚠ DANGER
THIS APPLIANCE NOT
PROTECTED WITH COMPLETE
ENCLOSURE.
SHIELD AND GROUND MUST BE
ENGAGED AT TIME OF
INSTALLATION.
ALL PANELS SHOULD BE
IN PLACE WHENEVER
POWER IS SUPPLIED
TO DISHWASHER.

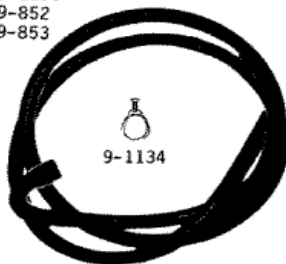
9-11766
9-11907 Canada



9-11406



52679



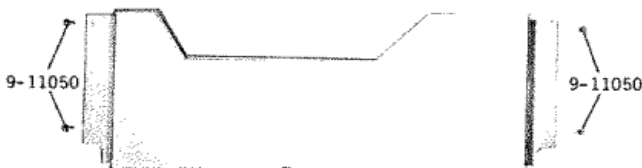
9-1134

9-11250

52740



9-11232



9-11050

9-11050

9-11231



9-10392



9-11445



4-321

2-10042



9-11224

9-11223



9-11228

9-11227

4-10645

9-1573

9-1831



WU701 CONVERSION KIT (WC701)

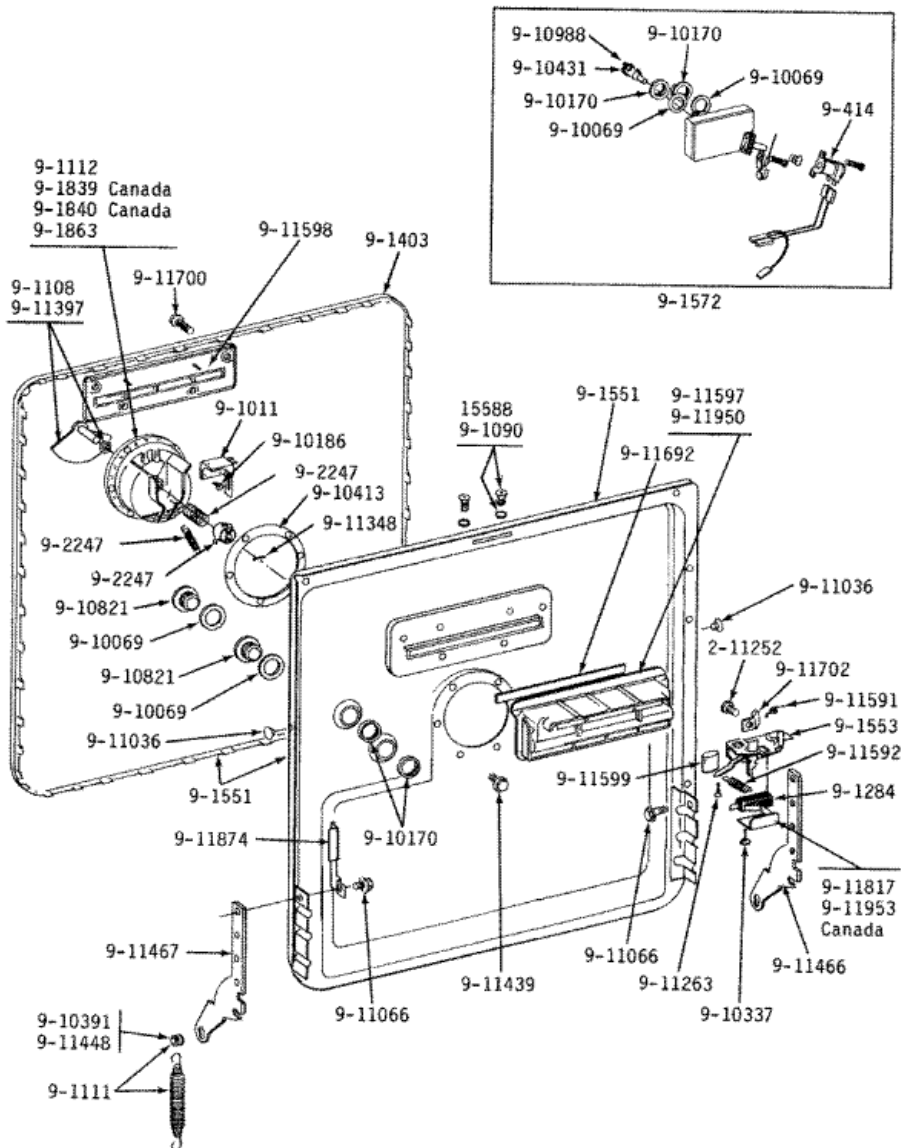
1	Y052679	DESCONTINUADO
2	Y052740	NUT (S/P)
3	210042	WASHER (S/P)
4	400321	CLAMP, CABLE (S/P)
5	410635	FASTENER (S/P)
6	900852	WIRE HARNESS (S/P)
7	900853	WIRE HARNESS (S/P)
8	901107	STREET ELBOW W/SEALING TAPE (S/P)
9	901134	HOSE CLAMP - 1 3/16 (S/P)
10	901298	WATER VALVE-WU MODELS (S/P)
11	901573	DESCONTINUADO
12	901831	CONVERSION KIT-WC TO WU (S/P)
13	910392	LEG, ADJUSTABLE (S/P)
14	911050	SCREW (S/P)
15	911223	PIN FOR ADJUSTABLE LEG (S/P)
16	911224	DESCONTINUADO
17	911227	NUT FOR ADJUSTABLE LEG (S/P)
18	911228	SHOE FOR ADJUSTABLE LEG (S/P)
19	911231	BASE, FRAME (S/P)
20	911232	PANEL, TOE (S/P)
21	911250	DRAIN HOSE (S/P)
22	911401	HOLE PLUG (S/P)
23	911406	CABLE CLIP (S/P)
24	911425	SPRING ACCESS COVER (S/P)
25	911426	ACCESS PANEL BARRIER (S/P)
26	911445	WIRE CONNECTOR (S/P)
27	911766	LABEL (S/P)
28	911856	CLAMP, SPRING (S/P)
29	911907	CSA WIRING LABEL - CANADA (S/P)

Distribuidor Autorizado

SurteRápido.com

Venta de Refacciones
Electrodomesticas

WU701 DOOR ASSEMBLY





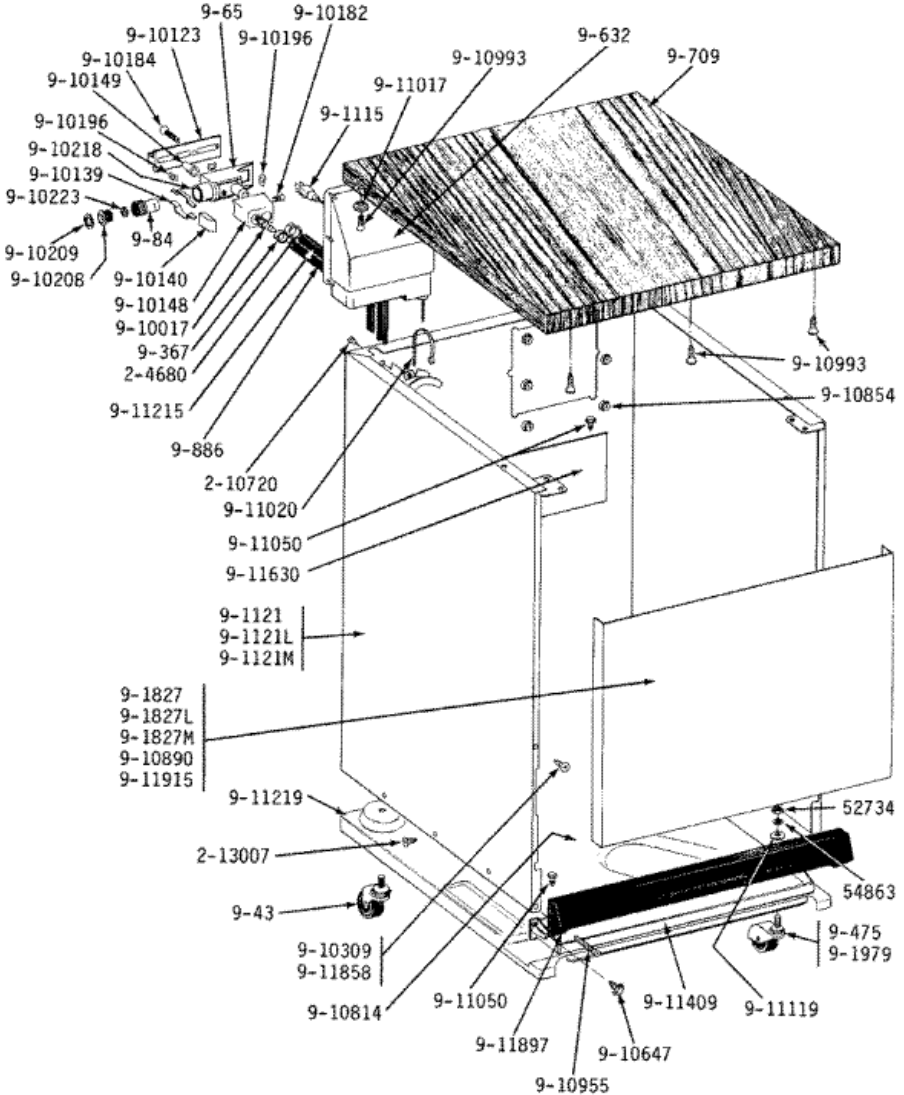
WU701 DOOR ASSEMBLY

1	15588	LEAD WASHER (S/P)
2	211252	SCREW (S/P)
3	900414	SOLENOID (S/P)
4	901011	BI-METAL RELEASE (S/P)
5	901090	SCREW AND WASHER ASSEMBLY (S/P)
6	901108	DETERGENT CUP, COVER & SEAL (S/P)
7	901111	DOOR SPRING KIT (S/P)
8	901112	DETERGENT CUP WITH GASKET (S/P)
9	901284	SWITCH, DOOR (S/P)
10	901403	GASKET, DOOR (S/P)
11	901551	DOOR AND GASKET ASSEMBLY (S/P)
12	901553	DOOR LATCH ASSEMBLY (S/P)
13	901572	RINSE DISPENSER KIT (S/P)
14	901839	DETERGENT CUP, CANADA (S/P)
15	901840	DETERGENT CUP - CANADA (S/P)
16	901863	DETERGENT CUP WITH GASKET (S/P)
17	910069	WASHER, TUB TOP (S/P)
18	910170	NUT-FILL SPOUT (S/P)
19	910186	SCREW (S/P)
20	910337	SCREW (S/P)
21	910391	INSERT (S/P)
22	910413	GASKET (S/P)
23	910431	FILLER PLUG-DISPENSER VALVE (S/P)
25	910988	GASKET (S/P)
26	911036	GUIDE BUTTON (S/P)
27	911066	SCREW (S/P)
28	Y911263	SCREW (S/P)
29	911348	DETERGENT CUP PIN (S/P)
30	911397	DETERGENT CUP SEAL (S/P)
31	911439	SCREW (S/P)
33	911466	HINGE-RIGHT HAND (S/P)
34	911467	HINGE-LEFT HAND (S/P)
35	911591	SPRING, INTERLOCK (S/P)

36	911592	RETURN SPRING (S/P)
37	911597	VENT FOR DOOR (S/P)
38	911598	COVER FOR DOOR VENT (S/P)
39	911599	KNOB FOR LATCH HANDLE (S/P)
40	911692	FLAPPER FOR VENT (S/P)
41	911700	SCREW (S/P)
42	911702	GROUND RECEPTACLE (S/P)
43	911817	DOOR SWITCH SHIELD (S/P)
44	911874	GROUNDING BRACKET (S/P)
45	911950	VENT FOR DOOR - CANADA (S/P)
46	911953	DOOR SWITCH SHIELD - CANADA (S/P)



**WU701 CBNT, FRT PANEL, BASE
 (WC701)**



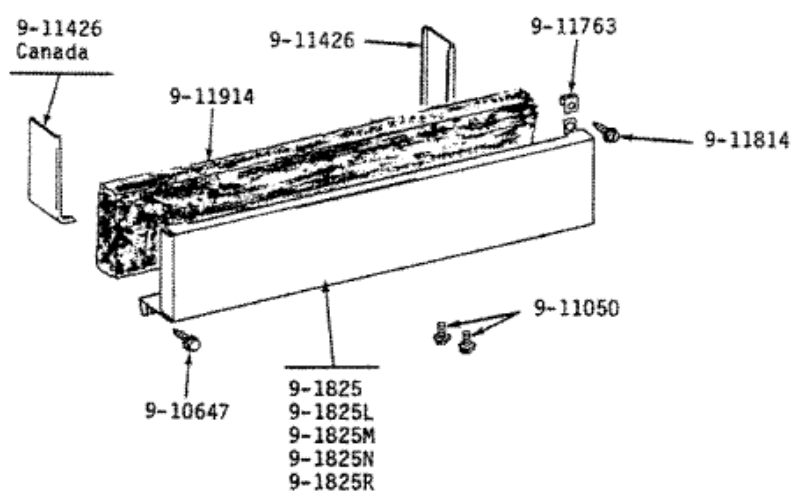
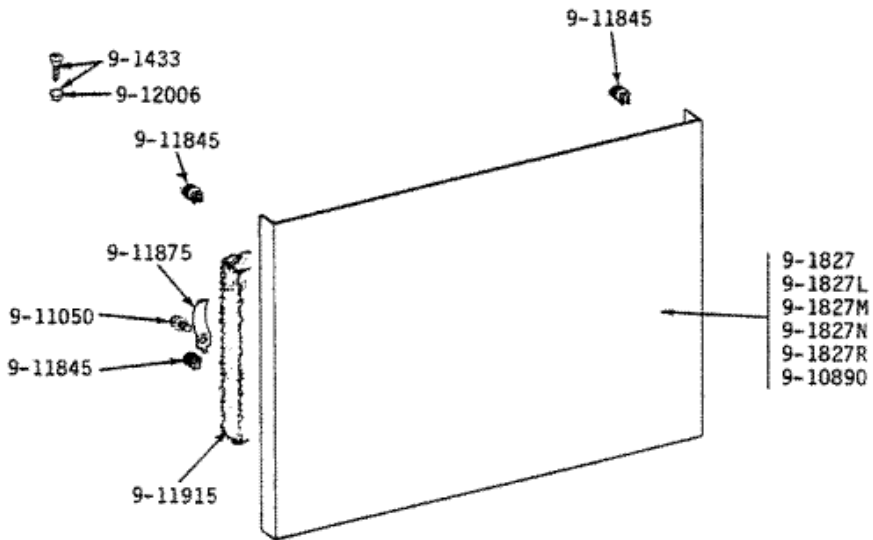


**WU701 CBNT, FRT PANEL, BASE
(WC701)**

5	213007	SCREW, CABINET (S/P)
6	900043	CASTER, 2 INCH (S/P)
7	900065	FAUCET COUPLER (S/P)
8	900084	AERATOR (S/P)
9	900367	HOSE CLAMP - 5/8 INCH MAX (S/P)
10	900475	CASTER (S/P)
11	900632	RETAINER FOR FAUCET COUPLER (S/P)
12	900709	WOOD TOP (S/P)
13	900886	INLET HOSE (S/P)
14	901115	POWER CORD W/CONNECTING NUT (S/P)
15	901121	CABINET-WHITE (S/P)
16	901121L	CABINET-ALMOND (S/P)
17	901121M	CABINET-HARVEST WHEAT (S/P)
18	901827	PANEL, FRONT (WHT) (S/P)
19	901827L	PANEL, FRONT (ALM) (S/P)
20	901827M	PANEL, FRONT (HVST WHEAT) (S/P)
21	901979	PAIR OF 9-475 CASTERS (S/P)
22	910017	NIPPLE FOR COUPLER - BRASS (S/P)
23	910123	COUPLER GRIP (S/P)
24	910139	DISCONNECT LEVER (S/P)
25	910140	THUMB RELEASE BUTTON (S/P)
26	910148	COVER FOR HOSE CLAMPS (S/P)
27	910149	BUTTON FOR VALVE (S/P)
28	910182	SCREW (S/P)
29	910184	SCREW (S/P)
30	910196	FASTENER (S/P)
31	910208	FAUCET ADAPTER (S/P)
32	910209	WASHER FOR FAUCET ADAPTER (S/P)
33	910218	COUPLER GASKET (S/P)
34	910223	WASHER, AERATOR (S/P)
35	910309	WASHER (S/P)
36	910647	SCREW (S/P)
37	910814	STRAIN RELIEF (S/P)

38	910854	PALNUT FOR COUPLER RETAINER (S/P)
39	910890	FELT PAD FOR FRONT PANEL (S/P)
40	910955	SCREW FOR TOE BOARD (S/P)
41	910993	SCREW (S/P)
42	911017	SPACER WASHER (S/P)
43	911020	CABLE STRAP (S/P)
44	911050	SCREW (S/P)
45	911119	WASHER (S/P)
46	Y911215	HOSE, DRAIN (S/P)
47	Y911219	FRAME, BASE (S/P)
48	911409	FRONT CASTER SUPPORT (S/P)
49	911630	CORD BARRIER-WC MODELS (S/P)
50	911858	SCREW (S/P)
51	911897	PANEL, TOE (S/P)
52	911915	INSULATION FOR FRONT PANEL (S/P)

WU701 FRONT PANEL & ACCESS PANEL (WC701)





WU701 FRONT PANEL & ACCESS PANEL (WC701)

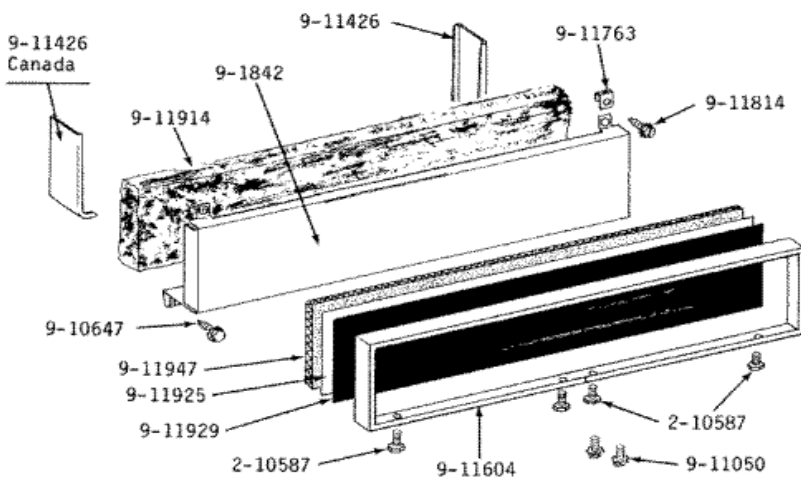
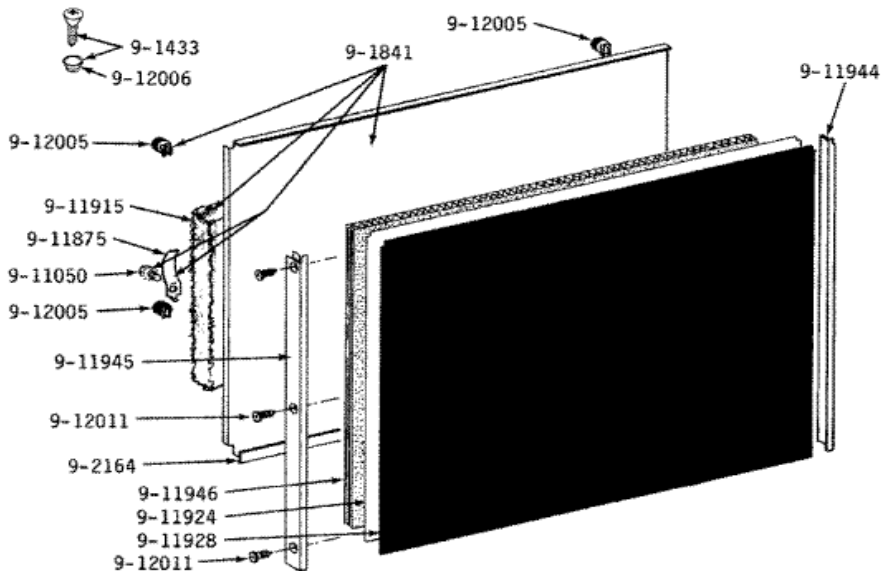
1	901433	SCREW AND WASHER ASSEMBLY (S/P)
2	901825	ACCESS PANEL-WHITE (S/P)
3	901825L	ACCESS PANEL-ALMOND (S/P)
4	901825M	ACCESS PANEL-HARVEST WHEAT (S/P)
5	901827	PANEL, FRONT (WHT) (S/P)
6	901827L	PANEL, FRONT (ALM) (S/P)
7	901827M	PANEL, FRONT (HVST WHEAT) (S/P)
8	910647	SCREW (S/P)
9	910890	FELT PAD FOR FRONT PANEL (S/P)
10	911050	SCREW (S/P)
11	911426	ACCESS PANEL BARRIER (S/P)
12	911763	U TYPE FASTENER (S/P)
13	911814	SCREW (S/P)
14	911845	NYLON GROMMET (S/P)
15	911875	GROUNDING CLIP (S/P)
16	911914	INSULATION FOR ACCESS PANEL (S/P)
17	911915	INSULATION FOR FRONT PANEL (S/P)
18	912006	WASHER (S/P)

Distribuidor Autorizado

SurteRápido.com

Venta de Refacciones
Electrodomesticas

WU701 FRONT PANEL & ACCESS PANEL (WU701)





WU701 FRONT PANEL & ACCESS PANEL (WU701)

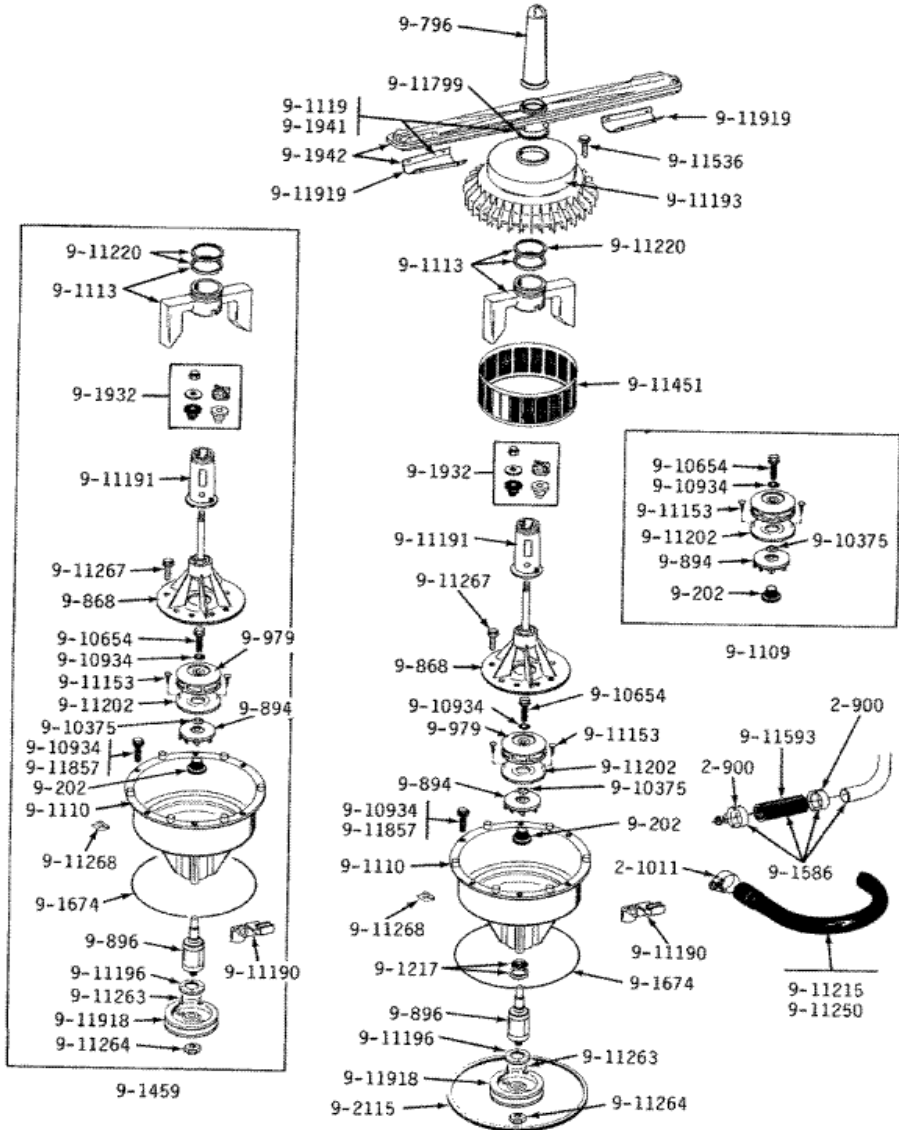
1	210587	SCREW (S/P)
2	901433	SCREW AND WASHER ASSEMBLY (S/P)
3	901838	INSERT KIT-COFFEE/FR AVOCAD (S/P)
4	901841	FRONT PANEL ASSEMBLY (S/P)
5	901842	ACCESS PANEL ASSEMBLY (S/P)
6	902163	INSERT KIT-WHITE/BLACK (S/P)
7	902164	LOWER TRIM KIT (S/P)
8	902233	INSERT KIT-WHITE/BROWN (S/P)
9	910647	SCREW (S/P)
10	911050	SCREW (S/P)
11	911426	ACCESS PANEL BARRIER (S/P)
12	911604	TRIM FOR ACCESS PANEL (S/P)
13	911763	U TYPE FASTENER (S/P)
14	911814	SCREW (S/P)
15	911875	GROUNDING CLIP (S/P)
16	911914	INSULATION FOR ACCESS PANEL (S/P)
17	911915	INSULATION FOR FRONT PANEL (S/P)
18	911926	INSERT-COFFEE/FRESH AVOCADO (S/P)
19	911927	INSERT-COFFEE/FRESH AVOCADO (S/P)
20	911928	INSERT-WHITE/BLACK (S/P)
21	911929	INSERT-WHITE/BLACK (S/P)
22	911944	TRIM STRIP - RIGHT HAND (S/P)
23	911945	TRIM STRIP - LEFT HAND (S/P)
24	911946	FILLER FOR FRONT PANEL (S/P)
25	911947	FILLER FOR ACCESS PANEL (S/P)
26	912005	GROMMET (S/P)
27	912006	WASHER (S/P)
28	912011	DESCONTINUADO
29	912096	INSERT-WHITE/BROWN (S/P)
30	912097	INSERT-WHITE/BROWN (S/P)

Distribuidor Autorizado

SurteRápido.com

Venta de Refacciones
Electrodomesticas

WU701 PUMP ASSEMBLY





WU701 PUMP ASSEMBLY

1	200900	CLAMP, SPRAY ARM HOSE (S/P)
2	201011	CLAMP, HOSE (TUB OUTLET) (S/P)
3	900202	SEAL ASSEMBLY (S/P)
4	900796	NOZZLE (S/P)
5	900868	PUMP COVER (S/P)
6	900894	DRAIN IMPELLER (S/P)
7	900896	PUMP SHAFT & BEARING ASSM. (S/P)
8	900979	CIRCULATING IMPELLER (S/P)
9	901109	PUMP REPAIR KIT (S/P)
10	901110	PUMP HOUSING ASSEMBLY (S/P)
11	901113	FLUSH ARM WITH SEAL RING (S/P)
12	901119	LOWER SPRAY ARM ASSEMBLY (S/P)
13	901217	SLINGER AND DEFLECTOR KIT (S/P)
14	901459	PUMP REPAIR ASSEMBLY (S/P)
15	901586	TOP SPRAY HOSE W/COUPLING (S/P)
16	901674	GASKET WITH FASTENERS (S/P)
17	901932	BEARING KIT F/LOWER WASH AR (S/P)
18	901941	SPRAY ARM WITH GASKET (S/P)
20	902115	BELT WITH LUBRICANT (S/P)
21	910375	SEAL (S/P)
23	910934	SEAL, O-RING (S/P)
25	911190	INSERT FOR PUMP HOUSING (S/P)
26	911191	SUPPORT FOR WASH ARM (S/P)
27	911193	STRAINER (S/P)
28	Y911196	RETAINER FOR BEARING (S/P)
29	Y911202	BAFFLE FOR PUMP (S/P)
31	911220	SEAL RING FOR STRAINER (S/P)
34	Y911264	HEX NUT, PULLEY TO SHAFT (S/P)
36	911268	FASTENER (S/P)
37	911451	FILTER (S/P)
39	911593	RUBBER COUPLING (S/P)
40	911799	GASKET FOR LOWER SPRAY ARM (S/P)
42	911918	PULLEY ON PUMP ASSEMBLY (S/P)

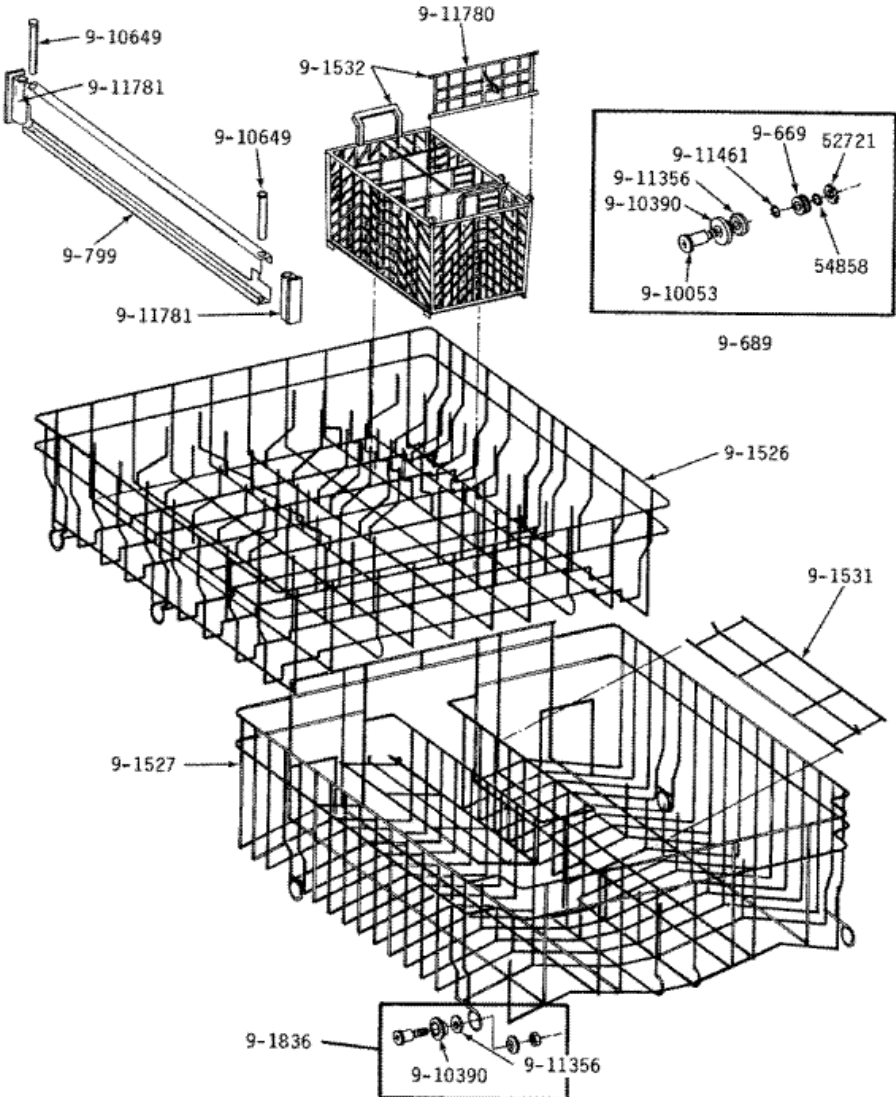
Distribuidor Autorizado

SurteRápido.com

Venta de Refacciones
Electrodomesticas



WU701 TRACK & RACK ASSEMBLY





WU701 TRACK & RACK ASSEMBLY

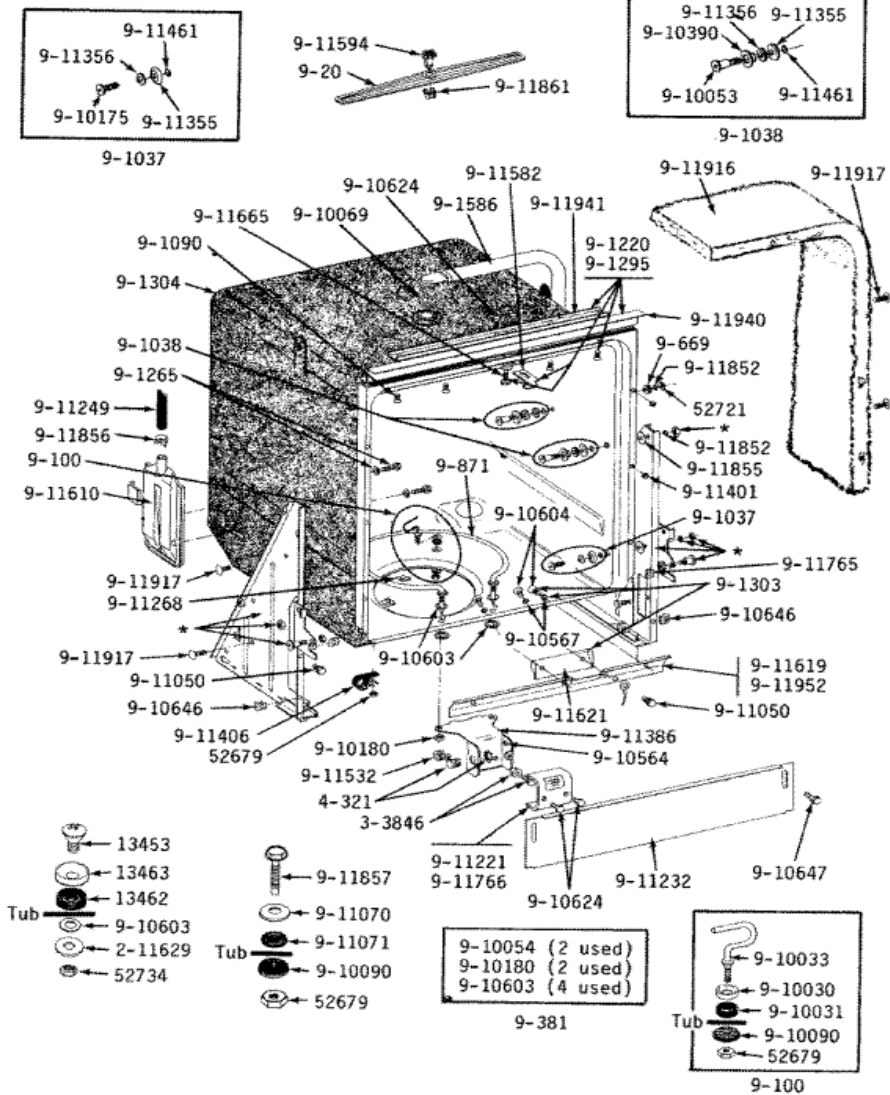
1	Y052721	NUT (S/P)
2	Y054858	WASHER (S/P)
3	900669	WASHER (S/P)
4	900689	TRACK SHAFT AND SEAL KIT (S/P)
5	900799	TRACK ASSEMBLY (S/P)
6	901526	UPPER RACK ASSEMBLY (S/P)
7	901527	RACK, LOWER (S/P)
8	901531	RACK, CUP (S/P)
9	901532	SILVERWARE BASKET WITH COVE (S/P)
10	901836	RACK ROLLER KIT (S/P)
11	910053	SHAFT, RACK ROLLER (S/P)
12	910390	ROLLER (S/P)
13	910649	PIN-RACK STOP (S/P)
14	911356	WASHER (S/P)
15	911461	WASHER (S/P)
16	911780	COVER FOR SILVERWARE BASKET (S/P)
17	911781	RACK STOP (S/P)

Distribuidor Autorizado

SurteRápido.com

Venta de Refacciones
Electrodomesticas

WU701 TUB ASSEMBLY & COMPONENTS





WU701 TUB ASSEMBLY & COMPONENTS

1	Y052679	DESCONTINUADO
2	Y052721	NUT (S/P)
3	303846	SCREW & WASHER ASSY. (S/P)
4	900020	UPPER SPRAY ARM (W/NUT) (S/P)
5	900669	WASHER (S/P)
6	901037	BOLT, WASHER AND SEAL ASSM. (S/P)
7	901038	SHAFT, WASHER AND SEAL ASSM (S/P)
8	901090	SCREW AND WASHER ASSEMBLY (S/P)
9	901220	WIRE, GROUND (S/P)
10	901265	SCREW AND WASHER ASSEMBLY (S/P)
11	901295	TOP FLANGE ASSEMBLY (S/P)
12	901303	SCREWS, WASHERS & SHIELD ASS (S/P)
13	901304	TUB ASSEMBLY (S/P)
14	901586	TOP SPRAY HOSE W/COUPLING (S/P)
15	910053	SHAFT, RACK ROLLER (S/P)
16	910054	WASHER (S/P)
17	910069	WASHER, TUB TOP (S/P)
18	910175	SCREW (S/P)
19	910390	ROLLER (S/P)
20	910564	INSULATING BUSHING (S/P)
21	910567	WASHER (S/P)
22	910604	SCREW (S/P)
23	910624	SCREW (S/P)
24	910646	FASTENER (S/P)
25	910647	SCREW (S/P)
26	911050	SCREW (S/P)
27	911221	COVER, TERMINAL (S/P)
32	911249	INJECTOR HOSE (S/P)
50	911386	TERMINAL COMPARTMENT (S/P)
52	911406	CABLE CLIP (S/P)
53	911461	WASHER (S/P)
55	911582	STRIKE (S/P)
56	911594	OUTLET FOR UPPER SPRAY ARM (S/P)

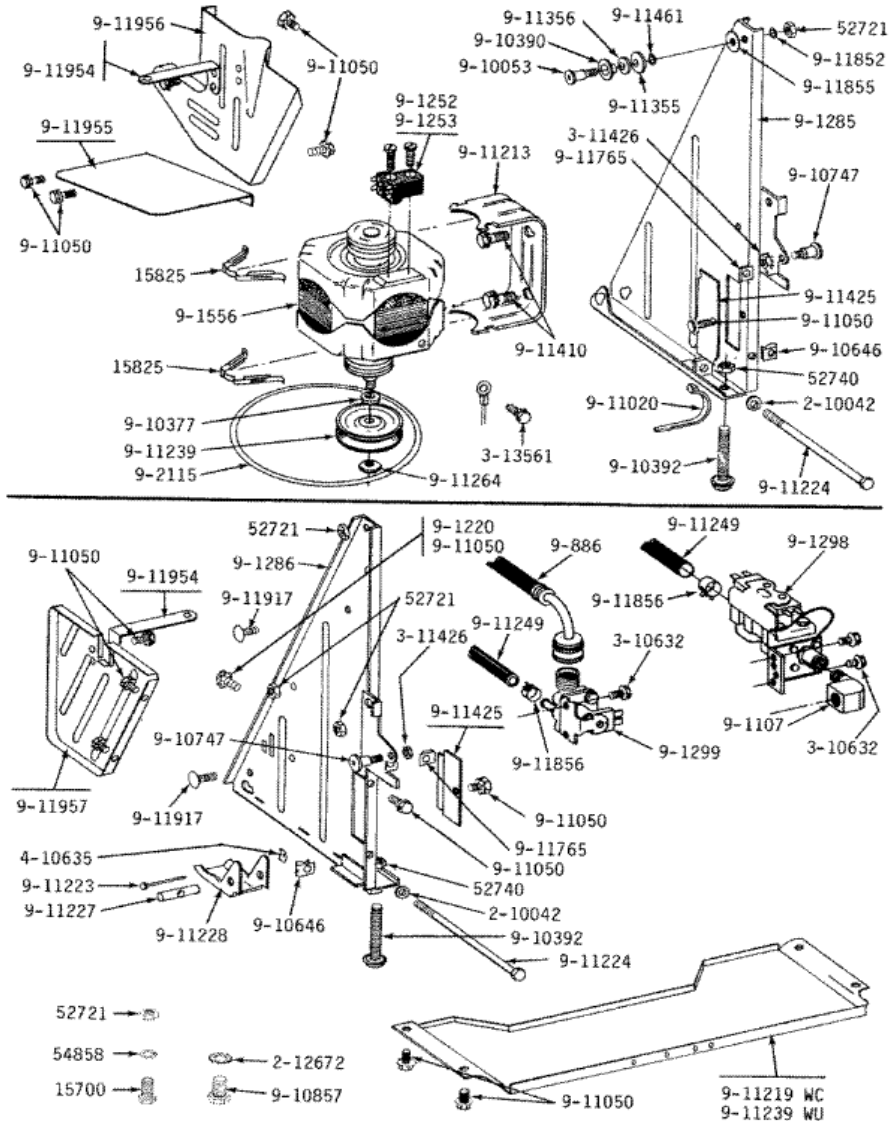
57	911610	VENT COVER (S/P)
58	911619	DRIP FLANGE (S/P)
59	911621	SHIELD (S/P)
60	911665	SCREW (S/P)
61	911765	U TYPE FASTENER (S/P)
62	911766	LABEL (S/P)
63	911852	WASHER, LOCK (BRACE) (S/P)
64	911855	WASHER (S/P)
65	911856	CLAMP, SPRING (S/P)
67	911861	NUT (S/P)
70	911940	TOP FLANGE (S/P)
71	911941	TOP FLANGE CHANNEL (S/P)
72	911952	DRIP FLANGE - CANADA (S/P)

Distribuidor Autorizado

SurteRápido.com

Venta de Refacciones
Electrodomesticas

WU701 TUB SUPPORTS, BASE FRAME, MOTOR & VALVES





WU701 TUB SUPPORTS, BASE FRAME, MOTOR & VALVES

1	15700	CAP SCREW, 1/4-20 X 1/2 (S/P)
2	Y015825	CLIP, MOTOR (S/P)
8	251193	SCREW (S/P)
9	Y310632	SCREW (S/P)
10	Y311426	NUT, WASHERED LOCK (S/P)
11	Y313561	DESCONTINUADO
14	901107	STREET ELBOW W/SEALING TAPE (S/P)
15	901220	WIRE, GROUND (S/P)
16	901252	MOTOR EXTERNAL START SWITCH (S/P)
17	901253	MOTOR EXTERNAL START SWITCH (S/P)
18	901283	TIMER (S/P)
19	901285	SUPPORT ASSEMBLY, RIGHT-HAN (S/P)
20	901286	SUPPORT ASSEMBLY, LEFT-HAND (S/P)
23	901523	TIMER MOTOR, RAPID ADVANCE (S/P)
24	901556	MOTOR (S/P)
25	901586	TOP SPRAY HOSE W/COUPLING (S/P)
26	901829	TIMER MOTOR (S/P)
27	902115	BELT WITH LUBRICANT (S/P)
28	910053	SHAFT, RACK ROLLER (S/P)
29	910377	WASHER (S/P)
30	910390	ROLLER (S/P)
32	910646	FASTENER (S/P)
33	910747	HINGE PIN (S/P)
35	911020	CABLE STRAP (S/P)
36	911050	SCREW (S/P)
37	911213	MOTOR SUPPORT (S/P)
39	911223	PIN FOR ADJUSTABLE LEG (S/P)
40	911224	DESCONTINUADO
41	911227	NUT FOR ADJUSTABLE LEG (S/P)
42	911228	SHOE FOR ADJUSTABLE LEG (S/P)
44	911239	PULLEY FOR MOTOR AND PUMP (S/P)
45	911249	INJECTOR HOSE (S/P)
46	Y911264	HEX NUT, PULLEY TO SHAFT (S/P)

47	Y911355	CUSHION WASHER (S/P)
48	911356	WASHER (S/P)
49	911410	SCREW, MOTOR BRACKET (S/P)
50	911425	SPRING ACCESS COVER (S/P)
51	911461	WASHER (S/P)
52	911503	BRACKET TIMER (S/P)
53	911504	BARRIER (S/P)
54	911660	LABEL (S/P)
55	911765	U TYPE FASTENER (S/P)
56	911852	WASHER, LOCK (BRACE) (S/P)
57	911855	WASHER (S/P)
58	911856	CLAMP, SPRING (S/P)
59	911917	FASTENER, INSULATION (S/P)
60	911954	BRACKET FOR ENCLOSURE-CANAD (S/P)
61	911955	WIRE PROTECTOR PAN - CANADA (S/P)
62	911956	BLOWER SIDE ENCLOSURE-CANAD (S/P)
63	911957	VALVE SIDE ENCLOSURE-CANADA (S/P)